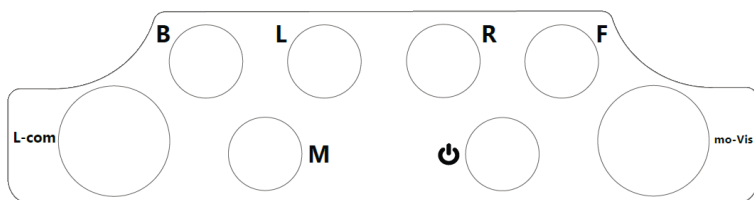
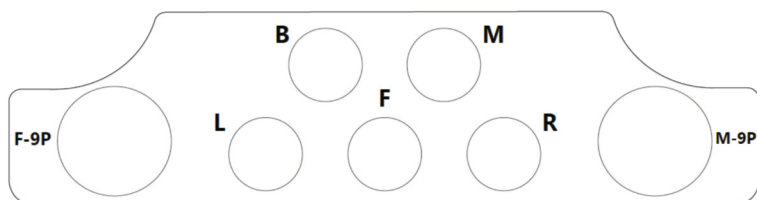


**Stealth Products**<sup>®</sup>



**Alternative  
Drive Controls**



## **i-Connect**

Owner's Manual - Maintenance Guide

i-Connect 5 & 6 Switch Box

<b>Customer Satisfaction .....</b>	<b>i</b>
<b>Important Information .....</b>	<b>ii-iii</b>
Warranty .....	ii
Supplier Reference .....	ii
Warning Labels .....	iii
Limited Liability .....	iii
<b>Design &amp; Function .....</b>	<b>1-2</b>
Safety Precautions .....	1
Intended Use .....	2
Features .....	2
Mounting .....	2
<b>Installation Instructions .....</b>	<b>3-6</b>
Preparations .....	3
Tools .....	3
Installation Plan .....	3
Required Tools .....	4
Parts Breakdown .....	5
Installing Switch Box to Chair .....	6
<b>Software Configuration .....</b>	<b>7-11</b>
Switch Box Programming .....	7
- Q-Logic Setup .....	8
- R-net Programming .....	10
- MK6i .....	11
<b>Testing .....</b>	<b>12</b>
<b>First-Time Use .....</b>	<b>13</b>
Dealer Assistance .....	13
User Testing .....	13
Conditions of Use .....	13
<b>Care &amp; Cleaning .....</b>	<b>14</b>
Cleaning .....	14
Monthly Check .....	14
i-Connect Maintenance .....	14

**Stealth Products** is committed to 100% customer satisfaction. Your complete satisfaction is important to us. Please contact us with feedback or suggestions to help us improve the quality and usability of our products.

You may reach us at:



**Stealth Products, LLC**  
104 John Kelly Drive,  
Burnet, TX 78611

Phone: (512) 715-9995      Fax: (512) 715-9954  
Toll Free: (800) 965-9229      Toll Free: (800) 806-1225  
info@stealthproducts.com  
www.stealthproducts.com



<div>EC   REP</div> <div><b>MDSS GmbH</b> Schiffgraben 41 30175 Hannover Germany</div>	<div>CH   REP</div> <div><b>SODIMED SA</b> Chemin Praz Devant 12 1032 Romanel sur-Lausanne Switzerland</div>	<div>UK Authorized Representative</div> <div><b>MDSS-UK RP</b> 6 Wilmslow Road, Rusholme Manchester M14 5TP United Kingdom</div>
--	--	--

General

Read and understand all instructions prior to the use of the product. Failure to adhere to instructions and warnings in this document may result in property damage, injury, or death. Product misuse or failure to follow instructions will void the warranty.

Immediately discontinue use if any function is compromised, if parts are missing or loose, or if any component shows signs of excessive wear. Consult with your supplier for repair, adjustment, or replacement.

All persons responsible for fitting, adjustment, and daily use of the devices discussed in the these instructions must be familiar with and understand all safety aspects of the devices mentioned. In order for our products to be used successfully, you must read and understand all instructions and warnings, and maintain our products according to our instructions on care and maintenance.

The installation instructions will guide you through this product’s options and possibilities.

Instructions are written with the expressed intent of use with standard configurations. They also contain important safety and maintenance information, as well as describe possible problems that can arise during use. For further assistance, or more advanced applications, please contact your supplier or **Stealth Products** at (512) 715-9995 or toll free at (800) 965-9229.

Always keep the operating instructions in a safe place so they may be referenced as necessary.

All information, pictures, illustrations, and specifications are based on the product information that was available at the time of printing. Pictures and illustrations shown in these instructions are representative examples and are not intended to be exact depictions of the various parts of the product.

## Important Information



### CAUTION

These products are designed to be fitted, applied, and installed exclusively by a healthcare professional trained for these purposes. The fitting, application, and installation by a non-qualified individual could result in serious injury.

## Warranty

Our products are designed, manufactured, and produced to the highest of standards. If any defect in material or workmanship is found, **Stealth Products** will repair or replace the product at our discretion. Any implied warranty, including the implied warranties of merchantability and fitness for a particular purpose, shall not extend beyond the duration of this warranty. **Stealth Products** does not warrant damage due to, but not limited to: misuse, abuse, or misapplication of product, and/or modification of product without written approval from **Stealth Products, LLC**. Any alteration or lack of serial number, where applicable, will automatically void all warranty.

**Stealth Products, LLC** is liable for replacement parts only. **Stealth Products, LLC** is not liable for any incurred labor costs.

**Stealth Products** warrants against failure due to defective materials or workmanship:

**Covers: 2 years**  
**Hardware: 5 years**  
**Electronics: 3 years**

In the event of a product failure covered by our warranty, please follow the procedures outlined below:

Call **Stealth Products** at (512) 715-9995 or toll free at (800) 965-9229.

Request a Return Authorization (RA) form from the Returns Department and follow the documentation instructions. Additional warranty information may be found by visiting the website at <https://stlpro.site/returns-n-warranty>, or by scanning the Warranty Information QR code on the back of this manual.

Copies of this manual may be downloaded by accessing the Stealth website (<https://stlpro.site/stealth-docs>) and searching "P06D532" in the search bar, or by scanning the Online User Manual QR code on the back of this manual.

## Supplier Reference

<b>Supplier:</b>	
<b>Telephone:</b>	
<b>Address:</b>	
<b>Purchase Date:</b>	
<b>Model:</b>	

## Warning Labels

Warnings are included for the safety of the user, client, operator, and property. Please read and understand what the signal words **DANGER**, **WARNING**, **CAUTION**, **NOTICE**, and **SAFETY** mean, and how they could affect the user, those around the user, and property.



**DANGER**

Identifies an **imminent** situation which, if not avoided, may result in **severe injury, death, and property damage**.



**WARNING**

Identifies a **potential** situation which, if not avoided, may result in **severe injury, death, and property damage**.



**CAUTION**

Identifies a **potential** situation which, if not avoided, may result in **minor to moderate injury and property damage**.

**NOTICE**

Identifies important information not related to injury, but possible **property damage**.

**SAFETY**

Indicates steps or instructions for safe practices, reminders of safe procedures, or important safety equipment that may be necessary.

## Limited Liability

**Stealth Products, LLC** accepts no liability for personal injury or damage to property that may arise from the failure of the user or other persons to follow the recommendations, warnings, and instructions in this manual.

**Stealth Products** does not hold responsibility for final integration of final assembly of product to end user. **Stealth Products** is not liable for user death or injury.

## Testing

Initial setup and driving should be done in an open area free of obstacles until the user is fully capable of driving safely.

### Safety Precautions

- The switch boxes are intended to be fitted on any power wheelchair with DB9 connection.
- Incorrect use or installation may lead to risk of injury to the user and damage to the wheelchair or other property.
- In order to reduce these risks, you should carefully read this manual, paying attention to the safety instructions and warnings.
- Any unauthorized use of the product may lead to increased risk of accident. Carefully follow the recommendations in this manual in order to prevent accidents from use.
- The switch boxes are non-serviceable parts.
- Always contact your dealer or service technician for questions concerning the operation or adjustment of the i-Connect Switch Boxes.



#### CAUTION

Ensure the coupling nuts on the D-sub are not lost on the female side or you will be unable to permanently affix the D-sub male and female.



#### WARNING

Ensure that all wires are routed in a way which prevents them from being crushed, pinched, stretched, or sliced. Watch for wear and tear. Damaged wires can make the box inoperable.



#### WARNING

Be sure the i-Connect is in a place where it will not be crushed or damaged by operation of the wheelchair.



#### WARNING

Ensure that mono-jacks are correctly inserted and all directions work as intended.  
Be sure that the user understand what each control does.



#### WARNING

During install, it is recommended that the device is installed so that the mono jack ports are not facing up to prevent ingress of water.

## Intended Use

### 5 Switch Box

The 5 Switch Box allows the four directional commands and the mode command to be controlled by five switches with 1/8" mono plugs. This box is compatible with most wheelchair electronics and/or other devices that allow for switch control. It is also compatible with all i-Connect products. Power is supplied through the DB9 connection to the wheelchair.

### 6 Switch Box

The 6 Switch Box allows the four directional commands, mode command, and power to be controlled by six switches with 1/8" mono plugs. This box is compatible with most wheelchair electronics and/or other devices that allow for switch control. It is also compatible with all i-Connect products. Power is supplied through the DB9 connection to the wheelchair. Built into the cabling is a male 1/8" mono jack to power a chair on or off. This power plug can also be used to control other devices, such as a communication device.

## Features

The i-Connect Switch Boxes are:

- Four-directional command
- Compatible with all wheelchair electronics and switch control devices
  - Anything with a 1/8" mono plug such as mo-Vis accessories, the Twister, etc.
- Compatible with all i-Connect products
- Power supplied by a DB9 connection
- 6 Switch Box can power chair on/off or control other devices such as a communication device such as a communication device

## Mounting

The i-Connect Switch Boxes can be mounted by using the included butterfly mount. It can be mounted on most tracks and is recommended to be mounted on the back of the chair.

### Preparations

Only a qualified service technician may install the i-Connect switch box.



#### **WARNING**

An incorrect programming of the switch box or chair electronics may cause damage to the devices or injury to the user.

### Tools

Use the proper tools to install and adjust the i-Connect switch box to the chair.



#### **CAUTION**

Use the proper tools to install and adjust the switch box. The use of improper tools may cause damage to the device.

### Installation Plan

Set up an installation plan before starting the installation of the switch box. This plan should be based on the users' needs:

- Where the switch box should be placed.
- How the switch box will be operated
- The switch box parameter settings.
- The intended switches to be installed with the box.



#### **CAUTION**

Any connection must always be secured with all delivered screws. Only use the screws provided in the package.

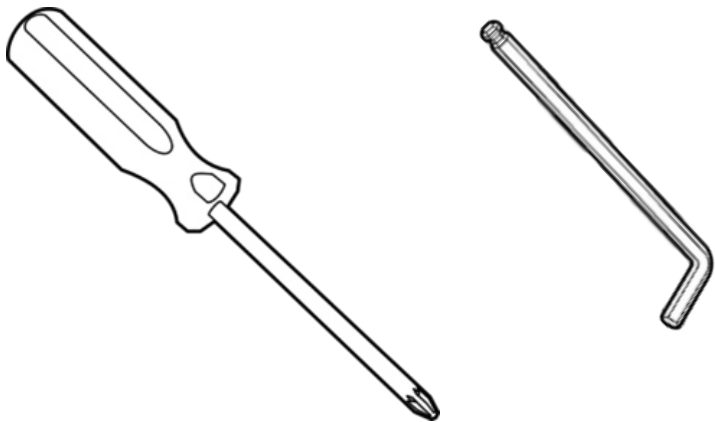


#### **CAUTION**

The recommended mounting location is on the back of the chair.

Required Tools

The tools you will need to complete the installation are:

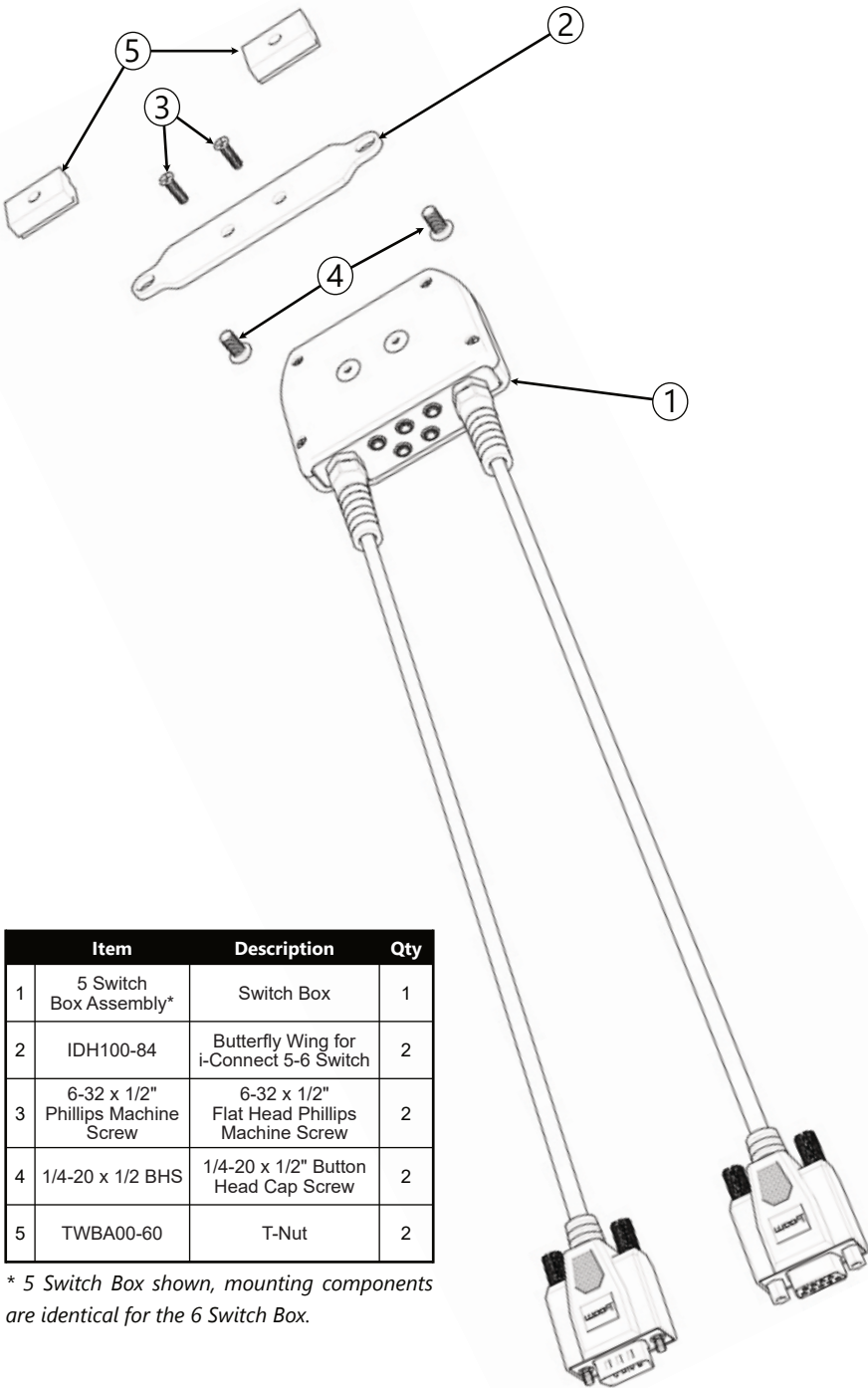


Hardware	Description
Phillips Screwdriver	Phillips Machine Screws mounting Box to Bracket
5/32" Hex Wrench	Button Head Screws on T-Nuts

Tools are not provided.

Screw	Torque Specification
1/4-20 x 1/2" Button Head Screws	125 in-lbs

Parts Breakdown



Item	Description	Qty	
1	5 Switch Box Assembly*	Switch Box	1
2	IDH100-84	Butterfly Wing for i-Connect 5-6 Switch	2
3	6-32 x 1/2" Phillips Machine Screw	6-32 x 1/2" Flat Head Phillips Machine Screw	2
4	1/4-20 x 1/2 BHS	1/4-20 x 1/2" Button Head Cap Screw	2
5	TWBA00-60	T-Nut	2

\* 5 Switch Box shown, mounting components are identical for the 6 Switch Box.

## Installing Switch Box to the Chair

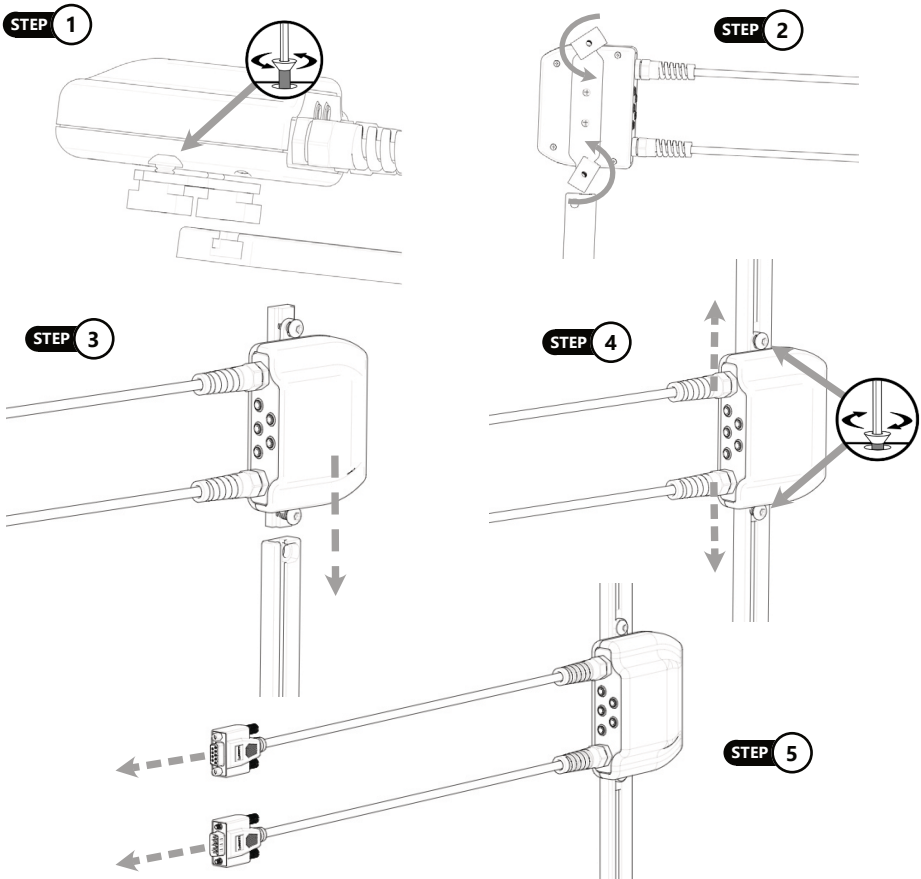
**Step One:** Using a 5/32" T-Handle, loosen the 1/4-20 x 1/2" Button Head Screws (4).

**Step Two:** Angle the T-Nuts (1) so that they are parallel with the desired track location.

**Step Three:** Slide the i-Connect through the track.

**Step Four:** Align the i-Connect on the correct location on the track, tighten the 1/4-20 x 1/2" BHS (4) with the 5/32" T-Handle to 125 in-lbs of torque.

**Step Five:** Route the wires as needed being sure that they will not be located in a path which will cause them to be crushed, stretched, or sliced.

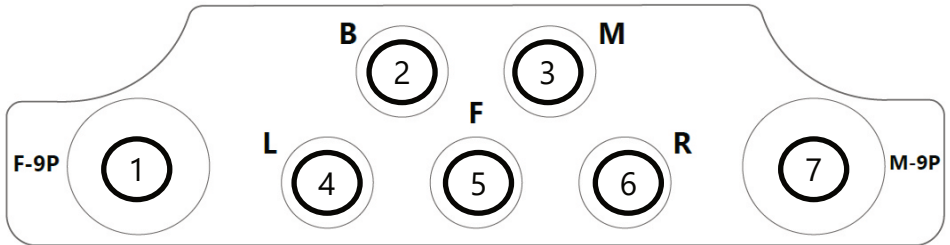


**WARNING**

Ensure that excess wires do not hang or could be tangled with the user or other equipment.

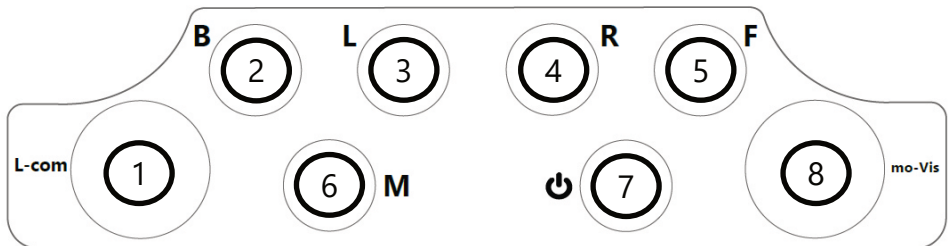
## Switch Box Programming

### Layout - 5 Switch Box



- 1) 9-Pin (Female)
- 2) 1/8" mono for Reverse
- 3) 1/8" mono for Mode function
- 4) 1/8" mono for Left
- 5) 1/8" mono for Forward
- 6) 1/8" mono for Right
- 7) 9-Pin (Male)

### Layout - 6 Switch Box



- 1) 9-Pin (Female)
- 2) 1/8" mono for Reverse
- 3) 1/8" mono for Left
- 4) 1/8" mono for Right
- 5) 1/8" mono for Forward
- 6) 1/8" mono for Mode function
- 7) 1/8" mono for Power
- 8) 9-Pin (Male)

# Q-Logic Setup

## Q-Logic Programmer

### Bookmark Buttons

Select options in the main menu. Button actions are displayed on-screen above corresponding buttons. In other menus, hold buttons to Bookmark Settings, and press button to quickly go to bookmark.

### Plus & Minus

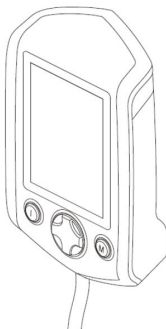
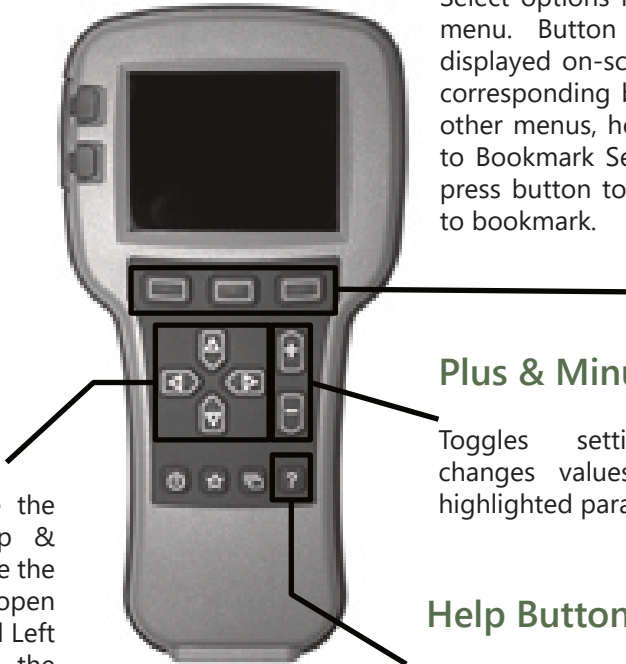
Toggles settings or changes values of the highlighted parameter.

### Help Button

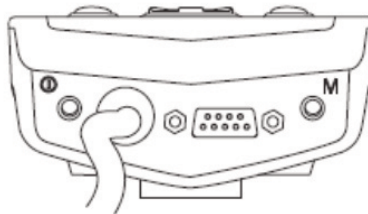
Displays information about options selected on screen.

### Navigation

Arrows navigate the main menu. Up & Down to navigate the menus. Right to open a menu item and Left to return to the previous menu.



Q-Logic Enhanced Display



**Note:** Q-Logic Enhanced Display and Q-Logic Handheld Programmer required

### Q-Logic 2

Install the Switch Box and secure to the chair. Plug the female 9-pin into the Enhanced Display. If using an SCIM, plug the 9-pin into the SCIM module. If using the 6 Switch Box, plug the power mono plug into the *On/Off* jack on the hand control.

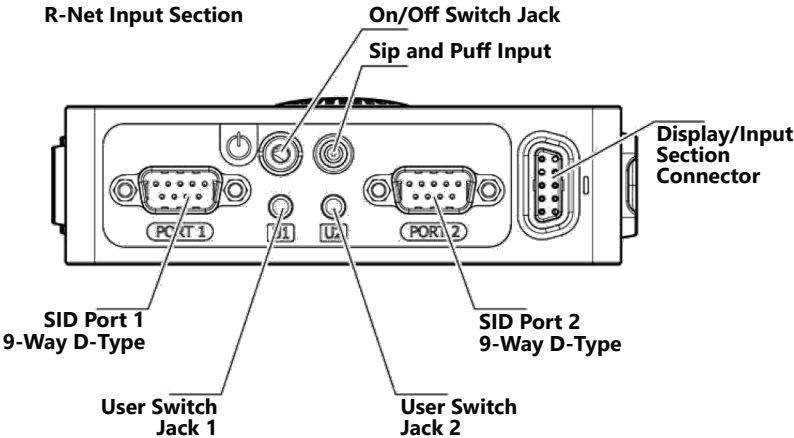
1. Plug the Q-Logic programmer (HHP) into the back of the display.
2. On the HHP, select *Program Adjustments*.
3. In the *Program Adjustments* menu, select *Specialty Control*.
4. Set *Active Device* to one of the following according to the number of switches and locations installed:
  - a. 2 Switch
  - b. 3 Switch
  - c. 4 Switch
  - d. 5 Switch
  - e. 3 Switch Head
  - f. 4 Switch Head
  - g. 5 Switch Head

### Q-Logic 3

Install the 6 Switch Box and secure to the chair. Plug the female 9-pin into the Enhanced Display. If using an SCIM, plug the 9-pin into the SCIM module. If using the 6 Switch Box, plug the power mono plug into the *On/Off* jack on the hand control.

1. Plug the Q-Logic programmer (HHP) into the back of the display.
2. On the HHP, Select *Program Adjustments*.
3. In the Program Adjustments menu, select *Enhanced Display* or *SCIM*.
4. Go to *Input Configuration*. Set this to one of the following according to the number of switches and locations installed.
  - a. 2 Switch
  - b. 3 Switch
  - c. 4 Switch
  - d. 5 Switch
  - e. 3 Switch Head
  - f. 4 Switch Head
  - g. 5 Switch Head

# R-Net Omni Programming



### R-Net

Install the Switch Box and secure to the chair. Plug the female 9-pin into SID 1 or SID 2 on the Omni Input Section. If using the 6 Switch Box, Plug the power mono plug into the On/Off Switch Jack on the Omni.

1. Connect the programming dongle.
2. Press *Mode (M)* on the Omni until you reach the *On Board Programming (OBP)* menu.
3. Select *Omni*.
4. Select *Port 1* or *Port 2*.
5. Set *SID* to one of the following
  - a. *Swi*- if using switches for both *Forward & Reverse*.
  - b. *3Swi*- if not using a *Reverse* switch.

### MK6i

Plug the female 9-pin into the digital input on the Sip 'N Puff with digital interface. If using the 6 Switch Box, plug the power mono jack into the Remote On/Off port (Port A) on the MK6i Display or Joystick.

1. Plug the MK6i hand held programmer (HHP) into the chair.
2. Turn on the chair.
3. Turn on the MK6i hand held programmer (HHP).
4. Select *Performance Adjust*.
5. In the *Performance Adjust* menu, scroll to *Input Type*:
  - Set this to *Digital* for each drive profile.
6. Use the *Save* key to save the changes.

#### NOTICE

If not using a switch for reverse, enable RIM Control to allow for reverse driving using the following steps.

- Return to the *Home* screen.
- Select *Performance Adjust*.
- Scroll down to *RIM Control*.
  - Set the desired drive profiles to On.
- Use the *Save* key to save the changes.

## Testing

After the installation of the i-Connect Switch Box, execute the following tests before the wheelchair is delivered or put into service, in this order:

- Operational Test
- Test Drive

### Operational Test

1. Activate the Wheelchair
2. Check for any error messages. Do not proceed before resolving this error.

### Test Drive

1. Perform a test drive with the wheelchair.
  - Move all directions and use all switches to verify proper function.
  - If there are any errors, stop. Do not proceed before resolving the error.
2. Check that the chair and the i-Connect and all of its operations are fully functioning.

Check that no cabling or parts may become damp.



#### **WARNING**

An incorrect programming of the switch box or chair electronics may cause damage to the devices or injury to the user.

### Dealer Assistance

During first time use by the client, it is advised that the dealer or service technician assists and explains the different drive configurations to the customer (the user and/or the attendant). If needed the dealer can make final adjustments.

### User Testing

It is important that the customer is fully aware of the installation, how to use it, and what can be adjusted in order to gain as much mobility as possible. As a dealer, proceed as follows:

- Explain and show the customer how you have executed the installation, and explain the function of every new item.

Have the user test all positions and functions of the i-Connect Switch Box:

- Is the switch box well positioned in accordance with the client's needs?
- Does the box have proper clearance to avoid damage or crushing during normal operation?
- Are all wires routed to avoid pinching, crushing, or stretching during normal operation?
- Can the user safely operate the switch box with the least effort?

If needed, adjust the switch box and retest until it is in the optimal position and functions properly.

Explain to the customer the possible problems and how to address them.

### Conditions of Use

The i-Connect Switch Box is intended for use as installed by the dealer, in accordance with instructions in this manual.

- The foreseen conditions of use are communicated by the dealer or service technician to the user and/or attendant during the first time use.
- If the conditions of use change significantly, please contact your dealer or qualified service technician to avoid excessive wear and tear or unintended damage.

## Cleaning

Clean all parts of the i-Connect Switch Box and its connections on a regular basis.

- Gently remove dust and dirt with a dry cloth.
- If more cleaning is necessary, use only a non-aggressive disinfectant cleaning agent.
- Tighten screws as necessary if the box becomes loose.
- Check that connections are secure and tighten the coupling nuts on the 9-Pin cables as needed.



### **WARNING**

Do not immerse the Switch Box or any of its components in water or use excessive amounts of liquid near the switch box.

## Monthly Check

Monthly, or when needed, check that:

- All bolts and screws are firmly tightened.
- There is no damage to any wiring.
- There is no excessive wear to any of the parts or wires.
- The switch box housing is secure and free of damage.

## i-Connect Maintenance

The i-Connect is designed to be maintenance-free, under regular use circumstances.

If you experience intermittent failure of one of the connected devices, test the mono jack port with a new mono jack cable to isolate the failing component.



© 2021, Stealth Products, LLC

**Warranty Information**



**Home Page**



**Online User Manual**



Stealth Products, LLC · info@stealthproducts.com · www.stealthproducts.com  
(800) 965-9229 | (512) 715-9995 | 104 John Kelly Drive, Burnet, TX 78611

P06D532R3

Aug 24, 2021