



UniLink™

a Stealth Product





Made for Simplicity

One of the main focus of the UniLink system is simplicity, and this is accomplished with the following points:

- Most adjustments can be accomplished with one tool, a 4mm hex wrench.
- All systems uses same link structure in three (3) size options: 1 1/2in (3.81cm), 2in (5.08cm) and 3in (7.62cm).
- All elements are compatible with one another.

4 TIMES the holding
POWER



UniLink
1 SYSTEM
FITS ALL



REVOLUTIONARY
MOUNTING SYSTEM

Built to Hold

UniLink allows for near limitless positioning of components with improved strength over TWB. UniLink uses a similar compression technology as its predecessor.

UniLink provides four times the strength of the current TWB family of products. UniLink joints compose of steel inserts can hold up to 102 ft-lbs before moving, and each joint can rotate up to 258°.

Designed as an Unified Ecosystem

UniLink began as an improvement to the current TWB family of products. The goal is to simplify the line and use one link for everything. During this project the past issues of TWB are being addressed.

Revolutionary Mounting System

Hence its brand name, the UniLink simplifies the component system by using one link configuration for everything. Every part integrates perfectly with one another giving the opportunity to better understand it, apply it and consider it for other implementations. Either as a pelvic solution or any other solution, each of it's components are interchangeable.

Table of Content

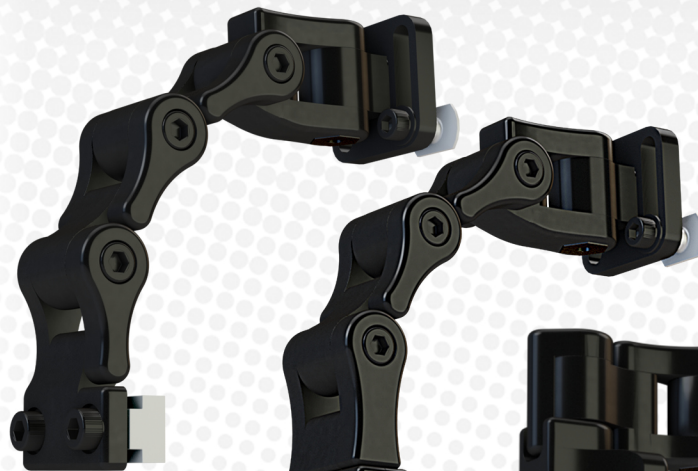
| | |
|----------------------------------|----|
| Pelvic/Thigh Hardware | 6 |
| Modifications | 7 |
| & Mounting Options | 7 |
| Pelvic/Thigh Pad Options..... | 8 |
| Pelvic/Thigh Pad Comparison..... | 9 |
| <hr/> | |
| Trunk (Lateral) Hardware | 11 |
| Thoracic Pad Options..... | 13 |
| Gel Properties | 14 |
| Mounting | 15 |
| Options | 15 |
| OEM Trunk | 16 |
| Mounting Options | 16 |
| All Season Brackets..... | 17 |
| <hr/> | |
| Elbow Stop Options..... | 19 |
| Custom Configuration..... | 20 |
| Elbow Stop | 21 |
| Pad Options | 21 |

| | |
|-------------------------------------|----|
| Head Solutions..... | 23 |
| Head Solutions Hardware | 24 |
| Head Solutions Headrest Pad | 25 |
| <hr/> | |
| Head Solutions Ultra Hardware | 26 |
| Head Solutions Ultra Pads | 27 |
| Other Head Solution Options | 28 |
| Swing Away Receiver | 29 |
| <hr/> | |
| UniLink Kit..... | 31 |
| UniLink Kit Breakdown | 32 |
| <hr/> | |
| Adapter Interface..... | 33 |
| Configurable Interface | 34 |
| Highly Adjustable..... | 35 |
| Highly Compatible | 36 |



Pelvic Solutions Hardware

Pelvic/Thigh Hardware



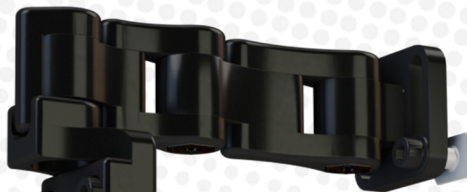
Fixed Standard

UTT23119O2-L
UTT23119O2-R

Multi-Angle

5in Stave (Short)
UTT7A116O2-L
UTT7A116O2-R

7in Stave (Long)
UTT6A116O2-L
UTT6A116O2-R



90° Angle

UTTP5-Q 5in Stave (Short)
UTTP7-Q 7in Stave (Long)

Traditional Long

UTS25300-L
UTS25300-R

Standard Traditional

UTS25100-L
UTS25100-R



Modifications & Mounting Options



FSC
Pad Mount
UTPFS100



All Season
UIMPBI090

90° Mounting
Brackets



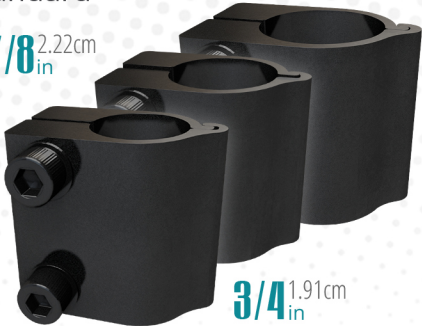
Standard
UIMPBI090



Cane Mounts
Standard

1 2.54cm
in

7/8 2.22cm
in



3/4 1.91cm
in

Pelvic/Thigh Pad Options



4in x 4in
10.16cm x 10.16cm
UTP544056100

4in x 6in
10.16cm x 15.24cm
UTP546056100

4in x 8in
10.16cm x 20.32cm
UTP548056100



4in x 10in
10.16cm x 25.40cm
UTP540056100

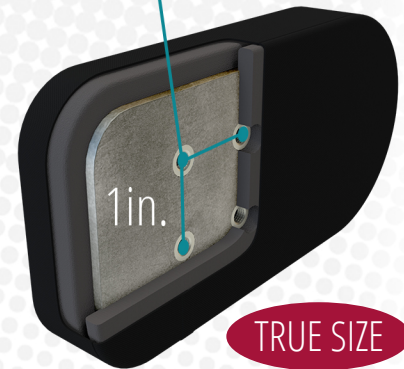
4in x 12in
10.16cm x 30.48cm
UTP54D056100

powered by  **coolcore**

Traditional Style Pads

Neoprene Cover

Metric 2.54cm Hole Spacing



3in x 6in
7.62cm x 15.24cm
UTP536056300

4in x 4in
10.16cm x 10.16cm
UTP544056300

4in x 6in
10.16cm x 15.24cm
UTP546056300

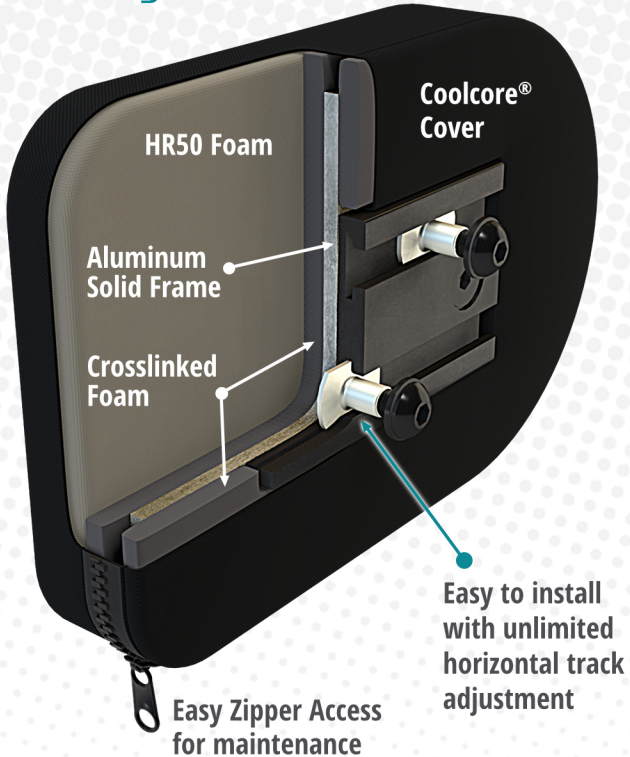
4in x 8in
10.16cm x 20.32cm
UTP548056300

4in x 10in
10.16cm x 25.40cm
UTP540056300

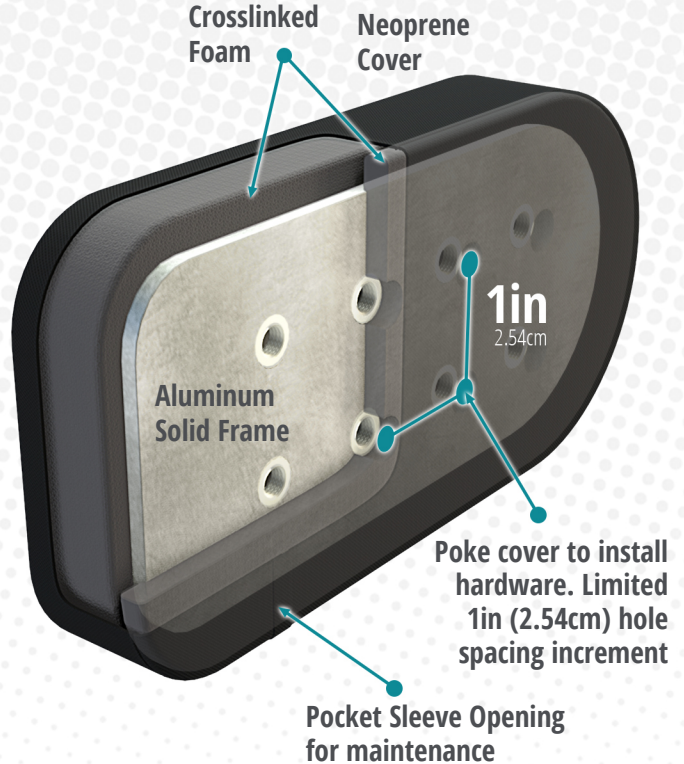
4in x 12in
10.16cm x 30.48cm
UTP54D056300

Pelvic/Thigh Pad Comparison

Track Style Pad



Traditional Style Pad



With enough pressure aluminum frame can be bent to shape



Trunk Solutions Hardware

Trunk (Lateral) Hardware

Swing-Away



Short

ULS25000-L
ULS25000-R

Standard

ULS25100-L
ULS25100-R

Inline

ULS05100-L
ULS05100-R

Fixed



Short

ULS23200-L
ULS23200-R

Standard

ULS23210-L
ULS23210-R

FSC

Full Surface Contact

360° Adjustable
Angles

Inline Flip-Away

ULS0510F-L

ULS0510F-R

Short Flip-Away

ULS2500F-L

ULS2500F-R

Short Fixed

ULS2320F-L

ULS2320F-R

Standard Flip-Away

ULS2510F-L

ULS2510F-R

Standard Fixed

ULS2321F-L

ULS2321F-R



UIPFSI100

Thoracic Pad Options

3in x 5in

7.62cm x 12.70cm

ULP535050320

ULP535057120



4in x 6in

10.16cm x 15.24cm

ULP546050320

ULP546057120

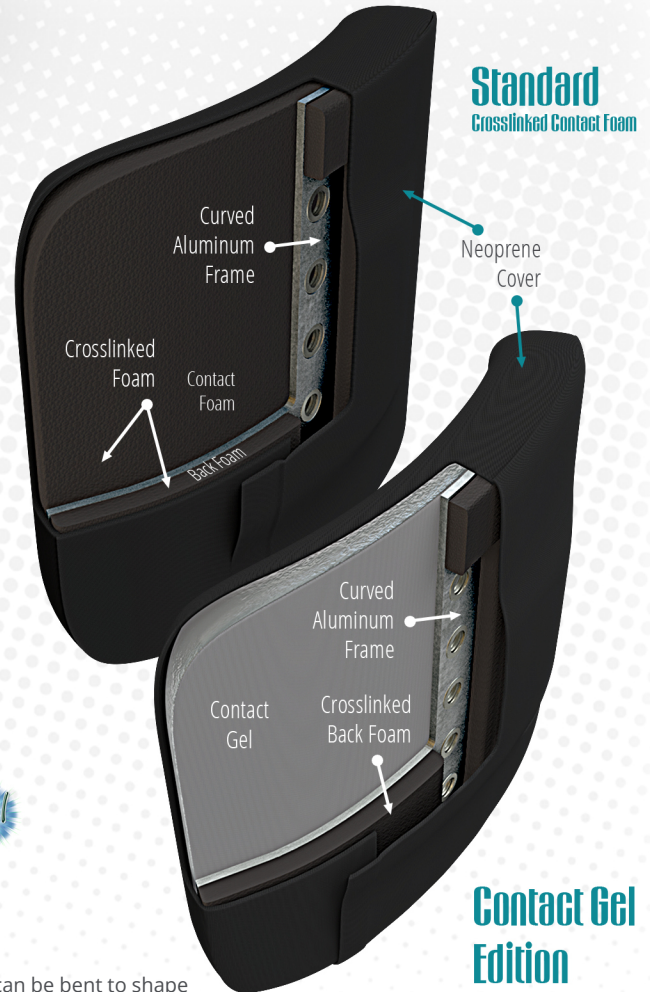


5in x 7in

10.16cm x 15.24cm

ULP557050320

ULP557057120



With enough pressure aluminum frame can be bent to shape

Gel Properties

Non-Toxic

if consumed

Maintain Consistency

on temperatures
under 200°F (93°C)

Does Not Bottom Out

when weight is applied

Passed Flammability Testing

per RESNA WC-1
and international requirements

No Harmful Chemicals

passes CAL Prop 65, REACH and RoHS

Safe for the Environment

is a green recyclable material

Glycerin Mineral Oil

little to no odor
compared to gels in
the market

Twill Fabric

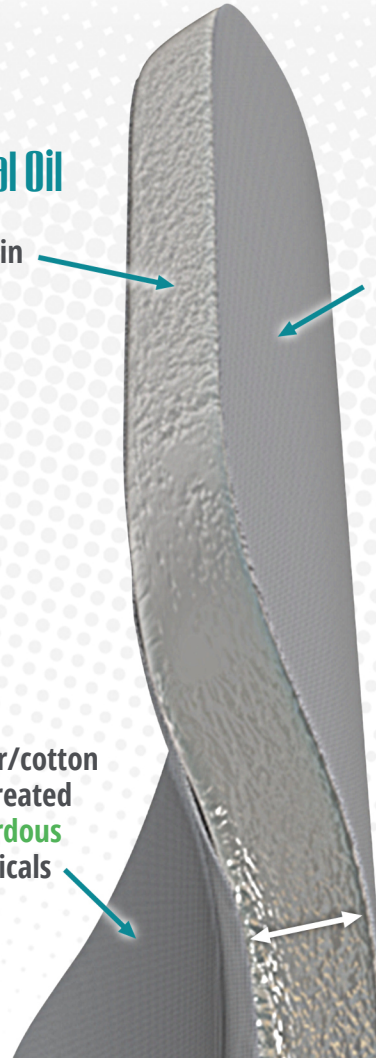
thin fabric coat
protecting the gel
both sides

Twill Fabric

65/35 polyester/cotton
woven fabric treated
with **non-hazardous**
dyes and chemicals

1/2in

(1.27cm)



Mounting Options

Cane Mounts

Brackets

Cane Mounts
Standard

$\frac{7}{8}$ 2.22cm
in

1 2.54cm
in

Crescent

$\frac{7}{8}$ 2.22cm
in

1 2.54cm
in

$\frac{3}{4}$ 1.91cm
in

105°

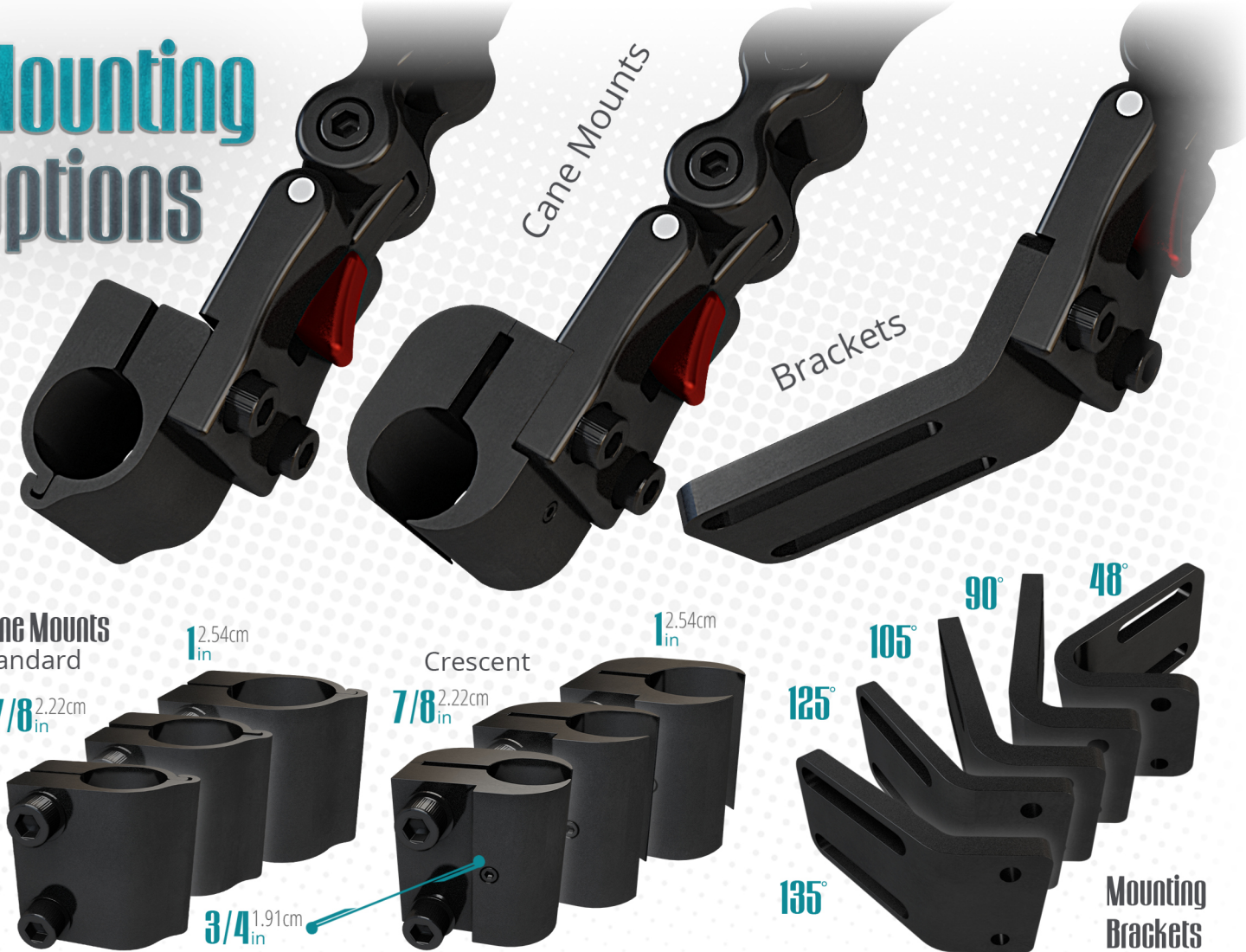
90°

48°

125°

135°

Mounting
Brackets



permobil

Corpus 3G UIMBKIP3G



QUANTUM REHAB®



UIMBKITB4 **TB4**



TB3
UIMBKITB3

**OEM Trunk
Mounting Options**

All Season Brackets

Tool Free on-demand width adaptable bracket



UIMASI090
Planar

90°



Angled
for curved surfaces

80°



UIMASI075

75°



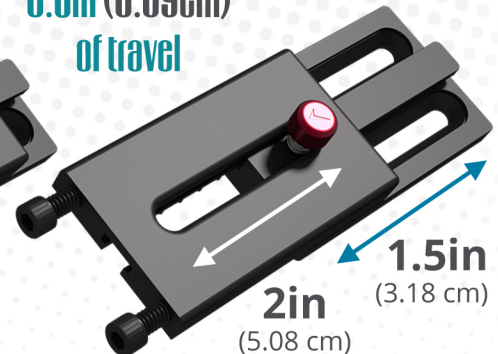
UIMASI070

70°



UniLink
Adapter Plate
ADP04

Up to
3.5in (8.89cm)
of travel





Upper Extremities Hardware

Elbow Stop Options

Flip-Away

UETB4213SL-Q
UETB4213SR-Q



Flip-Away ES Link Assembly

UE000213SL
UE000213SR



Fixed ES Link Assembly

UE000021F0



QUANTUM REHAB®
Flip-Back
Armrests

Fixed

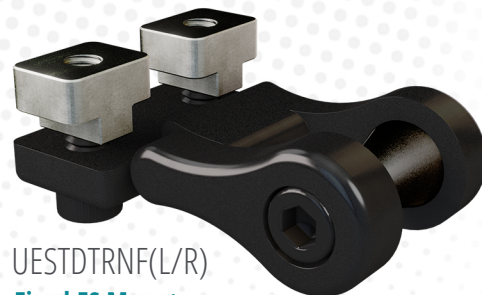
UETB4021FL-Q
UETB4021FR-Q



permobil
Corpus 3G



UEPRMTRNF(L/R)
Fixed ES Mount
with Permobil Track Nuts



UESTDTRNF(L/R)
Fixed ES Mount
with Standard Track Nuts

Custom Configuration

A detailed diagram of a custom UniLink ES configuration for an armrest. The assembly consists of several black plastic components: a top bracket with three 17mm balls and split rings, a 2-inch link, a joint link, a Permobil's Track Nut, a UniLink Spacer, and a Flip-Away Mount. A red wedge is visible between the UniLink Spacer and the Flip-Away Mount. The background features a light gray dotted pattern. Labels with teal text and dotted lines point to each component.

17mm Ball
with split ring

2in (5.08cm)
Link

All UniLink's components are compatible with one another allowing the ability to put together a configuration that better accomplishes a desired functionality.

Permobil's
Track Nuts

Joint Link

UniLink
Spacer

Flip-Away
Mount

The UniLink ES has been designed for a clean install at the back of a dual tracked armrest similar to the Quantum Flip-Back and Permobil Corpus 3G.

Elbow Stop Pad Options

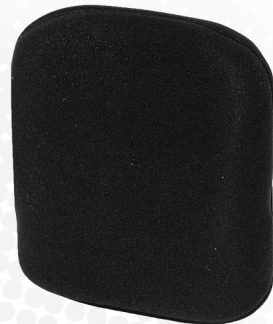
3in x 3in

7.62cm x 7.62cm

UEP533050320



UEP533057120



Contoured Pad

3in x 10in

7.62cm x 25.40cm

UEP53005032L

UEP53005032R



UEP53005712L

UEP53005712R



UEP544050320

UEP544057120

4in x 4in

10.16cm x 10.16cm

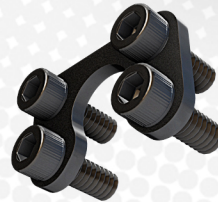




Head Solutions Hardware

Head Solutions

17mm
Ball Link



SU Split Ring
Comes included with Hardware

3in Links
7.62cm

258°



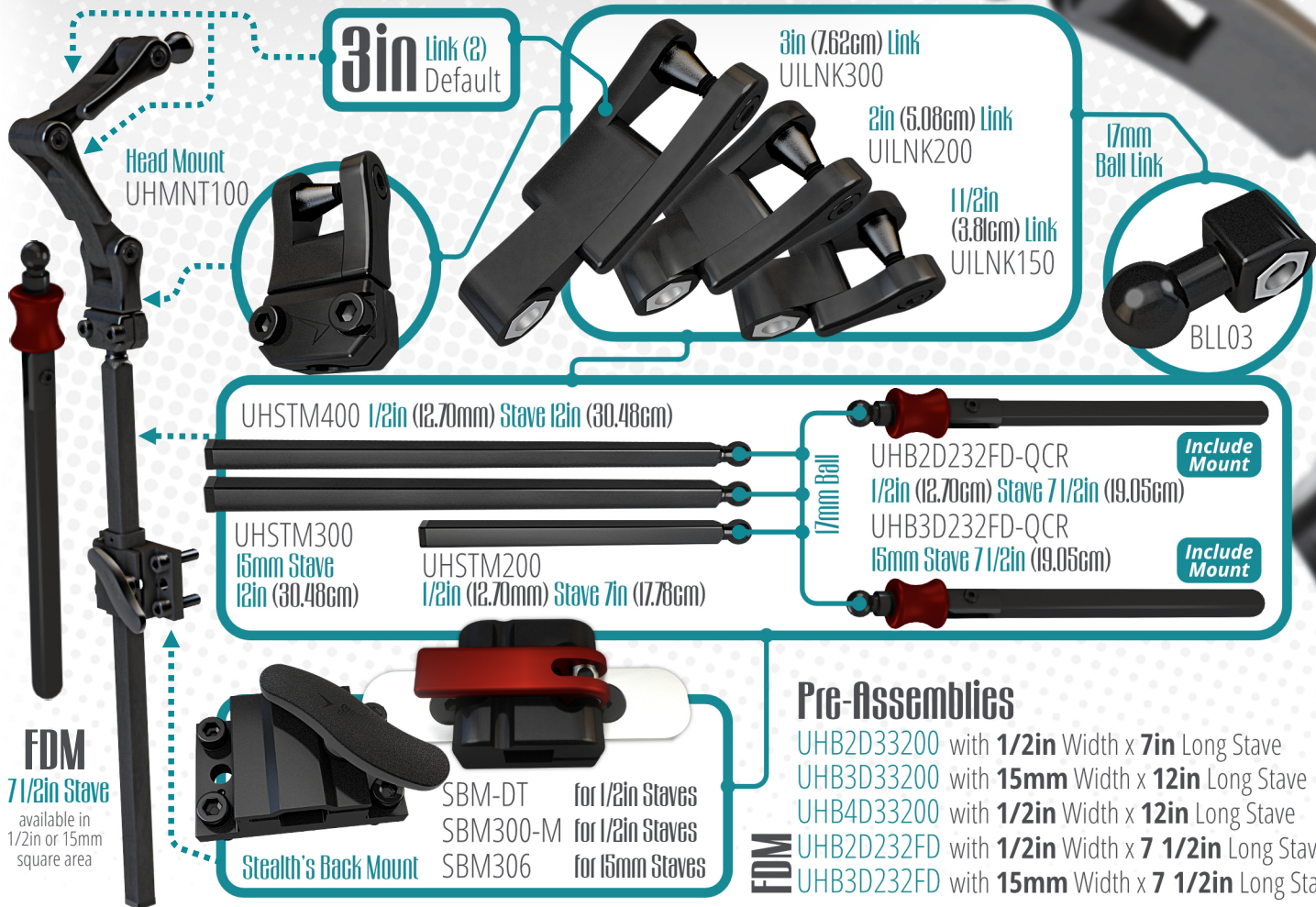
Comfort Plus v.2 Powered by **COOLCORE**

6in (15.24cm) CP06CCFPM **10in** (25.40cm) CP10CCFPM

8in (20.32cm) CP08CCFPM **14in** (35.56cm) CP14CCFPM

True Size

Head Solutions Hardware



Head Solutions Headrest Pad

Dimension are approximated



6 1/4in Wide
(15.87cm)

9 9/16in Wide
(24.25cm)

11 7/32in Wide
(28.51cm)

14 5/32in Wide
(35.94cm)

19 1/2in Wide
(49.53cm)



CP06CCFPM

4 1/4in Height
(10.76cm)



CP08CCFPM

5 3/4in Height
(14.60cm)



CP10CCFPM

5 3/4in Height
(14.60cm)



CP14CCFPM

5 3/4in Height
(14.60cm)

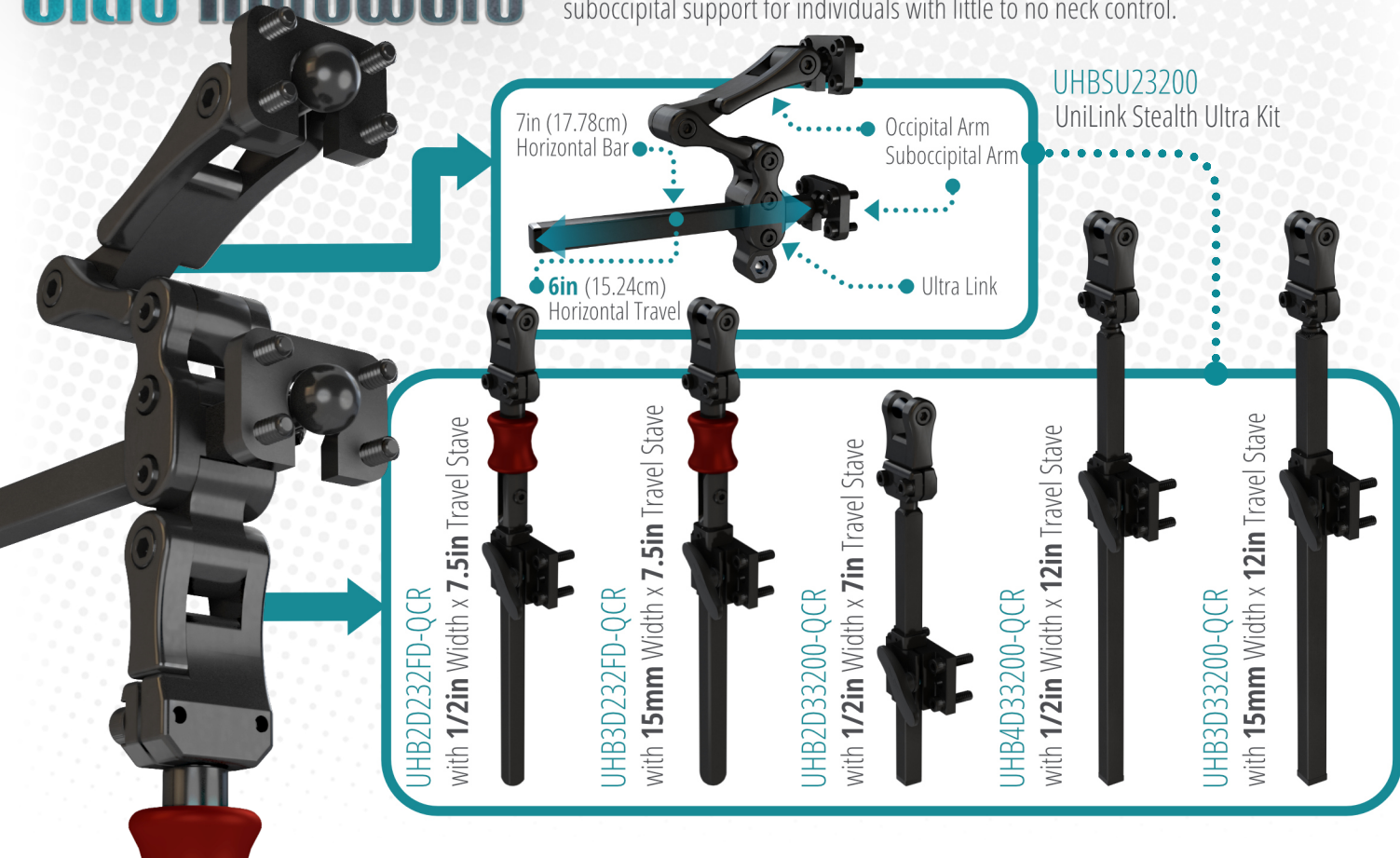


CP19CCFPM

5 1/8in Height
(13.01cm)

Head Solutions Ultra Hardware

The **UniLink Ultra** provides **occipital** and **suboccipital** support, which can be adjusted independently from each other. The occipital pad provides a more traditional support to the occiput (back of head). The suboccipital pad is positioned right between the back of the head and the top back portion of the neck. This setup provides extra support and positioning for individuals with limited neck control. For a more complex positioning solution, the **Ultra** hardware can be equipped with the **i2i** Upper Torso System as the suboccipital support for individuals with little to no neck control.



Head Solutions Ultra Pads

Stealth Ultra pads are designed to work as a aftermarket set of options. Keep in mind that the Ultra Hardware is compatible with all 17mm ball style Head Solution Pads. **For suboccipital the i2i could be used for a more advanced positioning solution.**



Occipital



530M

Curved 4x2

4in x 2 1/2in

(10.16cm x 6.35cm)



520M

Curved 4x3

4in x 3 1/4in

(10.16cm x 7.62cm)



510M

Flat 5x2

5in x 2in

(12.70cm x 5.08cm)



500M

Curved 7x4

7 1/4in x 4 1/4in

(18.42cm x 10.80cm)

Suboccipital



610M

Niño (Pediatric)

6 3/8in x 2 1/4in

(16.19cm x 5.71cm)



600M

Standard

8 1/2in x 2 3/4in

(21.59cm x 6.99cm)



620M

Extra Large

10 1/2in x 2 3/4in

(26.67cm x 6.99cm)

Other Head Solution Options



i2i



The i2i head positioning system stimulates proper posture for the head, neck and upper torso with a unique shape. Can be used as a suboccipital pad in the UniLink Ultra System.



CB

Combo

The Combo offers a good positioning solution in a small profile and easy on demand adjustments.

Tri-Comfort Plus



TCP



The Tri Comfort Plus expands the features of the Comfort Plus with the addition of angled lateral wings and a clinically based choice of length and heights. Functions as similarly to the ACP, but its laterals are fixed.



AP



All Positioning

The All Positioning (AP) has a unique combination of features that result in an anatomically shaped support. It provides the functions of a headrest as well as comprehensive head positioning system. The shell can be mold to head shape.



ACP



Adjustable Comfort Plus

The Adjustable Comfort Plus (ACP) combines all the features of the Comfort Plus with an adjustable triple pad head support that is designed to supply a resting position, or support against gravity in tilt and recline.

Swing Away Receiver

Our swing away receiver support temporal pads for lateral support, switches for access to external assistive technology devices, or even a chin joystick.



There is a lot more you can do...

check the Swing Away
website for more information





what will you
build next?

UniLink Kit

We have many other solutions that can be tackled with UniLink. For example, the UniLink Kit will come with one of each pre-assemblies as well as a tackle box of spare parts.

This kit is designed so that using the parts inside, one could build unique components or repair damaged items.



UniLink Kit Bag UNILINK-KIT-1
Limited Camo Pattern Edition

UniLink Kit Breakdown

Tackle Box Items



UniLink KIT

PRE-CONFIGURED BACK PACK ITEMS



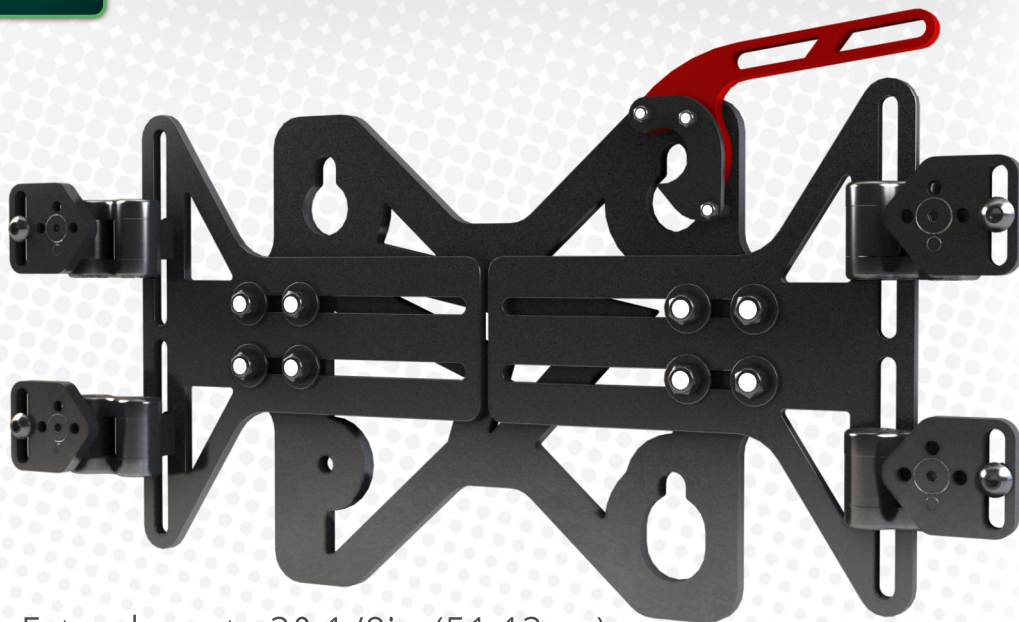
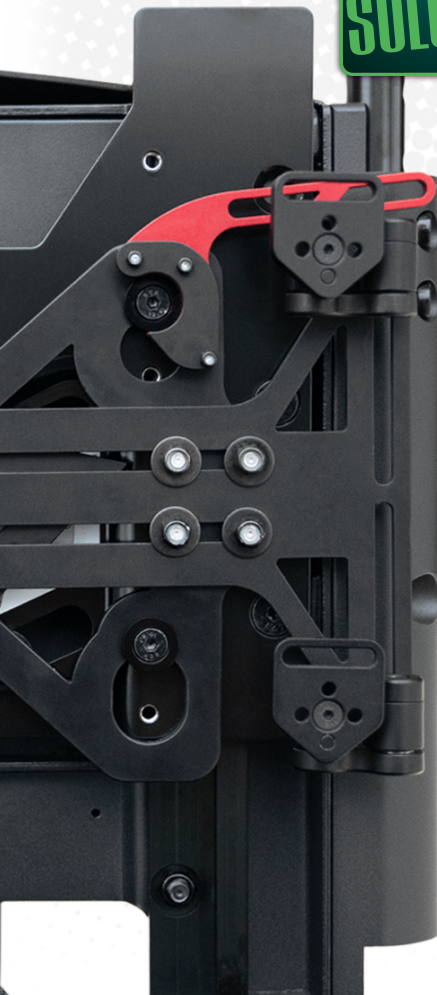
Tackle Box Content

UniLink Pre-Configured Systems

Mounts most backs
in the rehab market

**SIMPLE
SOLUTIONS**

Adapter Interface



Extends up to 20 1/8in (51.12cm)



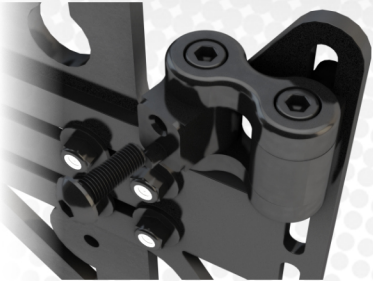
QUANTUM REHAB®

works with
TRU-Balance® 3 & 4
Edge 3 Stretto™

**OTHER FRAMES
COMING SOON!**

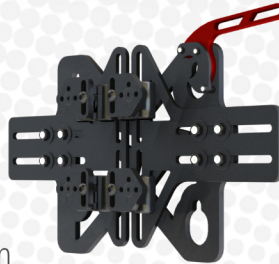
Configurable Interface

Compatible with UniLink™ System

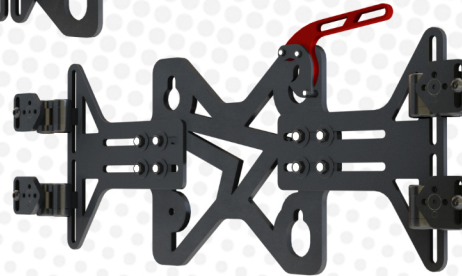
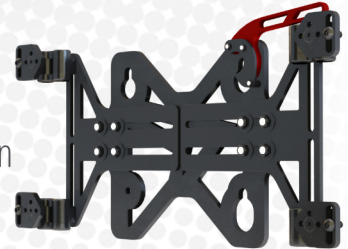


If possible backs
can be mounted
without cup
plates.

Center Point
Configuration



4 Point
Configuration



Wide Reach
Configuration

Minimal total seat depth loss



Can be mounted as close to the frame as possible

Highly Adjustable

Adapter
Lock Lever

NO REACH ZONE*

3-7/8in
(9.84cm)

NO REACH ZONE*

Cup Plate Rotates 360°
at 90° increments

1in
(2.54cm)

3in
(7.62cm)

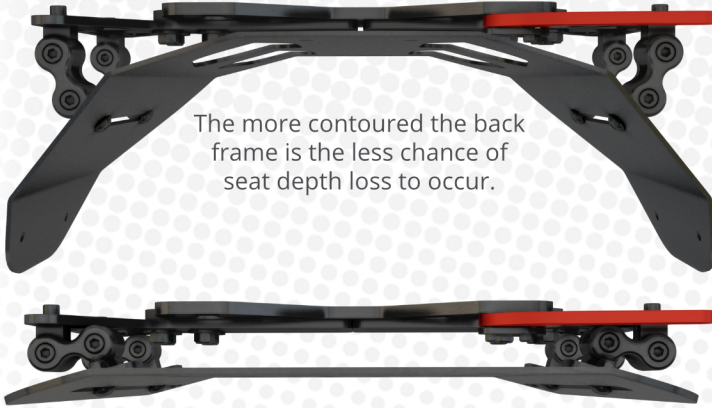
258°

Two
Adjustment
Points

6 1/2in to 8 1/2in ≈ *NO-REACH ZONE refers to an area which would not
(16.51cm to 21.59cm) be reachable unless additional components are implemented

Highly Compatible

ADI ALBR16SD Frame



The more contoured the back frame is the less chance of seat depth loss to occur.

**Stealth TFB
Flex Back
on a Quantum
Edge® 3**

TFB R-Back 14in Frame

Some brands targeted during the engineering process are, but not limited to:

- Matrix®
- Jay®: J3®
- Comfort Company: Acta-Back® / Acta-Embrace™ Series
- Roho®: Agility® Aluminum Series
- Ride®: Java® & Custom



4 TIMES the holding
POWER



4 mm

Steel Insert

258°
Adjustment

Light Aluminum

Steel Insert



Unilink™ 1 SYSTEM FITS ALL





REVOLUTIONARY MOUNTING SYSTEM

<https://unilink.stealthproducts.com>
information@sw.stealthproducts.com

104 John Kelly Drive, Building A
Burnet, TX 78611

+1 (800) 965-9229 • +1 (512) 715-9995