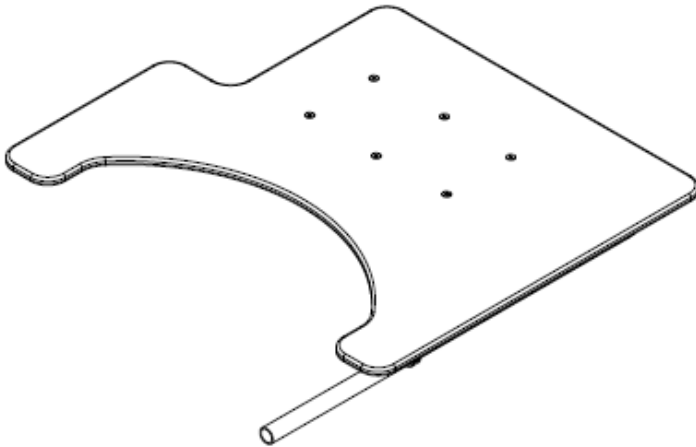


**Stealth Products**<sup>®</sup>

Mounting Hardware



**OWNER MANUAL**



## Simple Solutions Tray

---

Simple Solutions Lexan Tray Owner's Manual

Stealth Products strives for 100% customer satisfaction. Your complete satisfaction is important. Please contact us with feedback or suggested changes that will help improve the quality and usability of our products. You may reach us at:



Stealth Products, LLC

104 John Kelly Drive, Burnet, TX 78611

Phone: (512) 715-9995

Toll Free: 1(800) 965-9229

Fax: (512) 715-9954

Toll Free: 1(800) 806-1225

info@stealthproducts.com

www.stealthproducts.com



MDSS GmbH

Schiffgraben 41

30175 Hannover, Germany



## General

Read and understand all instructions prior to the use of the product. Failure to adhere to instructions and warnings in this document may result in property damage, injury, or death. Product misuse due to failure of the following instructions will void the warranty.

Immediately discontinue use if any function is compromised, parts are missing, loose, or shows signs of excessive wear. Consult with your supplier for repair, adjustment, or replacement.

## Important Information!

All persons responsible for fitting, adjustment, and daily use of the devices discussed in these instructions must be familiar with and understand all safety aspects of the devices mentioned. In order for our products to be used successfully, you must:

- Read and understand all instructions and warnings.
- Maintain our products according to our instructions on care and maintenance.

**Devices should be installed and adjusted by a trained technician.**

## Supplier Reference

Supplier: \_\_\_\_\_

Telephone: \_\_\_\_\_

Address: \_\_\_\_\_

\_\_\_\_\_

Purchase Date: \_\_\_\_\_

Model: \_\_\_\_\_

The installation instructions will guide you through the options and possibilities with the product.

Instructions are written with the expressed intent of use with standard configurations. They also contain important safety and maintenance information, as well as describe possible problems that can arise during use. For further assistance, or more advanced applications, please contact your supplier or Stealth Products at 1-512-715-9995 or toll free at 1-800-965-9229.

Always keep the operating instructions in a safe place so they may be referenced as necessary.

All information, pictures, illustrations, and specifications are based on the product information that was available at the time of printing. Pictures and illustrations shown in these instructions are representative examples and are not intended to be exact depictions of the various parts of the product.

### **CAUTION**

These products are designed to be fitted, applied, and installed exclusively by a health care professional trained for these purposes. The fitting, application and installation by a non-qualified individual could result in serious injury.

## Ordering Documentation

You can download additional copies of this owner's manual on the Stealth website:

<https://stlpro.site/stealth-docs>

by searching: *Simple Solutions Tray Owner's Manual* in the search bar at the top of the page.

Our products are designed, manufactured, and produced to the highest of standards. If any defect in material or workmanship is found, Stealth Products will repair or replace the product at our discretion. Any implied warranty, including the implied warranties of merchantability and fitness for a particular purpose, shall not extend beyond the duration of this warranty. Stealth Products, LLC does not warrant damage due to, but not limited to:

- Misuse, abuse, or misapplication of products.
- Modification of product without written approval from Stealth Products, LLC.
- Any alteration or lack of serial number, where applicable, will automatically void this warranty.
- Stealth Products, LLC is liable for replacement parts only.
- Stealth Products, LLC is not liable for any incurred labor costs.

No person is authorized to alter, extend, or waive the warranties of Stealth Products, LLC.

Stealth Products warrants against failure due to defective materials or workmanship:

Covers: 2 years

Hardware: 5 years

Electronics: 3 years

## **In Case of Product Failure**

In the event of product failure covered by our warranty, please follow the procedures outlined below:

1. Call Stealth Products at +1 (512) 715-9995 or toll free at +1 (800) 965-9229.
2. Request the Returns Department or obtain a Return Authorization (RA) from the Returns Department and follow department documentation instructions.

<b>1.0 Customer Satisfaction</b> .....	<b>i</b>
<b>2.0 Important Information</b> .....	<b>ii</b>
<b>3.0 Introduction</b> .....	<b>iii</b>
<b>4.0 Warranty</b> .....	<b>iv</b>
<b>5.0 Table of Contents</b> .....	<b>v</b>
<b>6.0 Warning Labels</b> .....	<b>vii</b>
6.1 Warning Labels .....	vii
6.2 Limited Liability.....	vii
6.3 Testing .....	vii
<b>7.0 Safety Precautions</b> .....	<b>viii</b>
7.1 General Safety Guidelines.....	viii
<b>8.0 Design and Function</b> .....	<b>1</b>
8.1 Intended Use .....	1
8.2 Features .....	1
8.3 Mounting .....	1
<b>9.0 Parts and Accessories</b> .....	<b>2</b>
9.1 Parts and Accessories Breakdown .....	2
9.2 Hardware Parts.....	4

<b>12.0 Installation Instructions</b> .....	<b>5</b>
12.1 Preparations .....	5
12.2 Tools.....	5
12.3 Installation Plan.....	5
12.4 Required Tools/ Torque Chart.....	6
12.5 Installing the Tray .....	7
<b>13.0 Adjustments</b> .....	<b>8</b>
13.1 Depth Adjustment.....	8
13.2 Horizontal Adjustment .....	8
<b>13.0 First Time Use</b> .....	<b>9</b>
13.1 Dealer Assistance .....	9
13.2 User Testing .....	9
13.3 Conditions of Use.....	9
<b>13.0 Maintenance</b> .....	<b>10</b>
13.1 Cleaning .....	10
13.2 Disinfecting.....	10
13.3 Maintenance.....	10
<b>14.0 Notes</b> .....	<b>11</b>

## Warning Labels

## 6.1

Warnings are included for the safety of the user, client, operator and property. Please read and understand what the signal words **SAFETY, NOTICE, CAUTION, WARNING** and **DANGER** mean, how they could affect the user, those around the user, and property.

### **DANGER**

Identifies an **imminent** situation which (if not avoided) will result in **severe injury, death, and property damage**.

### **WARNING**

Identifies an **potential** situation which (if not avoided) will result in **severe injury, death, and property damage**.

### **CAUTION**

Identifies an **potential** situation which (if not avoided) will result in **minor to moderate injury, and property damage**.

### **NOTICE**

Identifies important information not related to injury, but possible **property damage**.

### **SAFETY**

Indicates steps or instructions for safe practices, reminders of safe procedures, or important safety equipment that may be necessary.

## Limited Liability

## 6.2

Stealth Products, LLC accepts no liability for personal injury or damage to property that may arise from the failure of the user or other persons to follow the recommendations, warnings, and instructions in this manual.

Stealth Products does not hold responsibility for final integration of final assembly of product to end user. Stealth Products is not liable for user death or injury.

## Testing

## 6.3

Initial setup and driving should be done in an open area free of obstacles until the user is fully capable of driving safely.



## General Safety Guidelines

## 7.1

### **WARNING**

Ensure the user does not rest forearms on the edge of the tray as it can cause soreness to the user's forearms.

### **WARNING**

The tray should be removed during transportation or driving of the chair.

### **WARNING**

Care should be taken when swinging the tray to the side so as to not strike the user, or damage the tray.

### **WARNING**

The tray should not be used as a positioning device or pressed against the user's abdomen.

### **WARNING**

Ensure the user's fingers and any other equipment are out of the way when swinging the tray to the side.

### **NOTICE**

Your safety is important to us. If there is any information in this manual which you do not understand, or if you require additional assistance for setup or operation, please contact your authorized provider. **Failure to follow the instructions, warnings, and notes in this manual and those located on your product can result in personal injury or product damage and will void the product warranty.**

## Intended Use

### 8.1

The Simple Solutions Tray does away with the need for a user to pull under a table to participate in independent 'activities of daily life'. Mounting screws are flush to the surface of the tray to provide a flat writing and work surface for the user. The tray can also be used as a support device to help users maintain their posture and/or support their arms. The clear material allows for visibility of the lower extremities and correction of posture. The flip-away hardware lifts up and out of the way during transfers or for wheelchair storage. It also allows depth adjustability of the tray for comfort and optimal positioning for the user.

## Features

### 8.2

The Simple Solutions Tray features:

- A variety of adjustability through telescopic cane mounting and center track mounting.
- A dual mounting option that allows one tray to be mounted left or right for the user.
- A swing away option for ease of accessibility when getting on and off the chair.
- Polycarbonate material which provides strong impact resistance.
- A body cutout to prevent squeezing of the user's abdomen.

## Mounting

### 8.3

It is mounted on the armrest of a wheelchair and is only stable if the wheelchair is equipped with full length arms.

The hardware will mount to a 3/4" cane clamp.

#### CAUTION

The Simple Solutions Tray is intended to hold no more than 5lbs (2.27 kg) at a time is not intended to be a support surface or positioning device.

## Parts and Accessories Breakdown

### 9.1

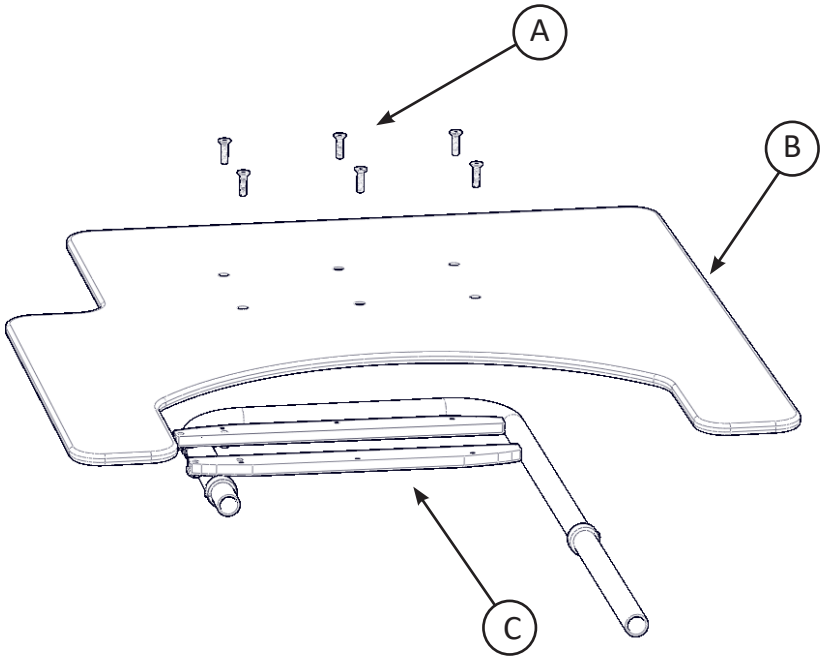
A typical Simple Solutions Tray package comes with:

1. Tray
  - Composed of shatter resistant polycarbonate material with better impact resistance and light transmission than most glass. Polycarbonate is safe, durable, and lightweight.
2. Swing Away Hardware
  - Composed of 3/4" aluminum tubing with black anodizing

# **Installation Instructions**

Hardware Parts

9.2



		Description	Qty.
A	Mounting Screws	M5 X 0.8 X 20MM FHS	6
B	Tray	Simple Solutions Tray	1
C	Hardware	Swing Away Hardware	1

Note: The size and shape of the tray will vary

## Preparations

### 10.1

Only a qualified service technician may install the Simple Solutions Tray.

#### **WARNING**

An incorrect installation of the Simple Solutions Tray may cause damage to the hardware and/or injury to the user.

## Tools

### 10.2

Use the proper tools to install and adjust the Simple Solutions Tray to the desired position for the user. Ensure all torque specifications are followed.

#### **CAUTION**

The use of improper tools may cause damage to the device. Not tightening to the torque specification can cause components to fail or cause discomfort to the user.

## Installation Plan

### 10.3

Set up an installation plan before beginning the installation. This plan should take into account:

- Where the tray will be placed as well as applicable laterals and support cushions
- How the tray will be operated - the quick release functions for the mount and laterals
- Sufficient clearance of other hardware and accessories

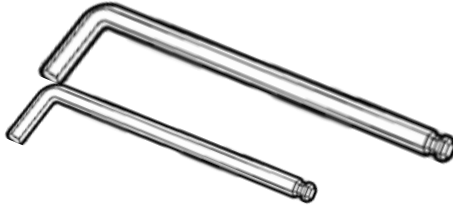
#### **CAUTION**

Any connection must always be secured with all delivered screws. Only use the screws provided in the package.

## Required Tools

## 10.4

The tools needed to complete the installation of the tray is as follows:



Hardware	Description
3mm T-Handle	Lateral Mounting (F1)
4mm T-Handle	Button Head Screws on Lateral Bracket (E1)

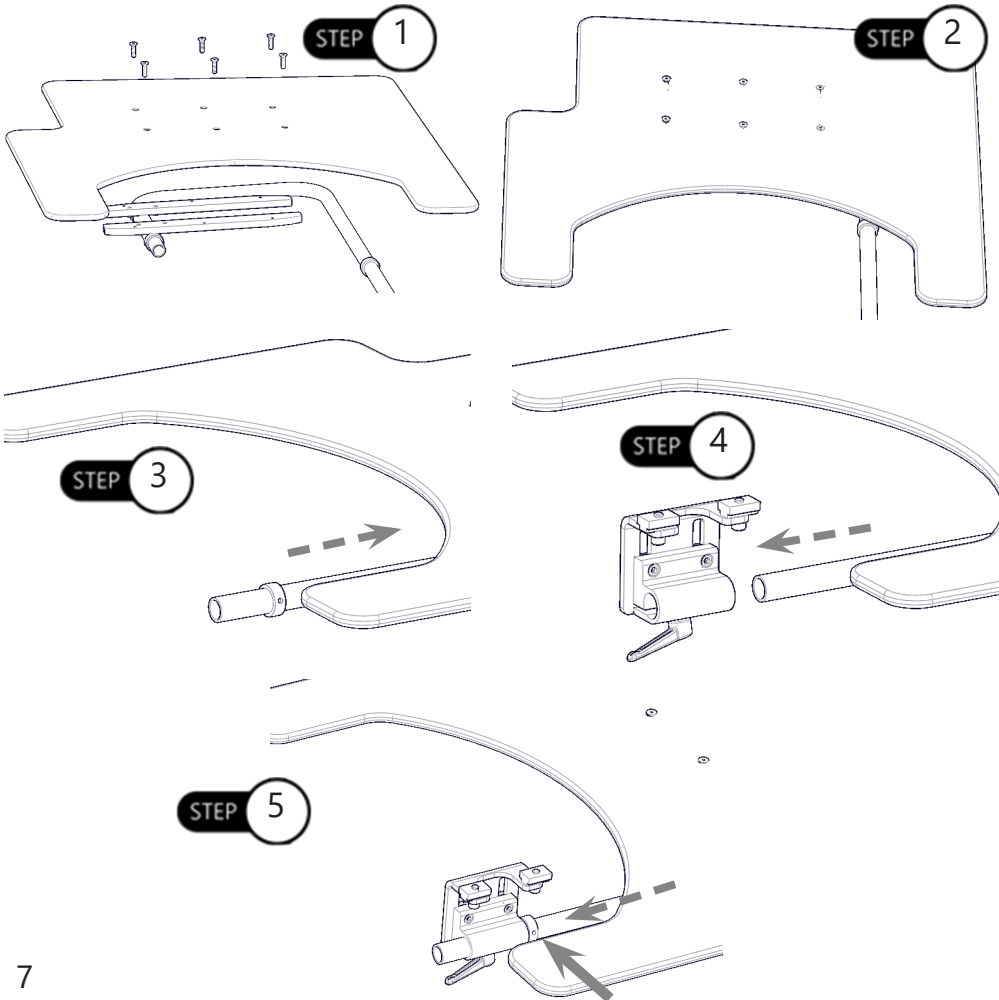
Tools are not provided.

Screws	Torque Specifications
M5 X 0.8 X 20MM Flat Head Screw	6.9nM
M5 X 0.8 X 4MM Set Screw	6.9nM
M6 X 1.0 X 10MM Button Head Screw	10.0nM

## Installing the Tray

## 10.5

- Step One:** Place the plastic tray over the mounting brackets. Align the holes of the plastic tray with the bracket holes.
- Step Two:** Using a 3mm T-Handle, tighten the M5 x 0.8 x 20mm Flat Head Screws to secure the tray to the hardware. Ensure that the screws are flush with the plastic to create a clean surface. (Do not overtighten as doing so can damage the plastic.)
- Step Three:** Loosen the stop collar using a 3mm T-Handle and slide it all the way forward on the tube.
- Step Four:** Insert the tube into the clamp and adjust to the appropriate depth.
- Step Five:** Slide the stop collar against the cane clamp and tighten it in place using a 3mm T-Handle.

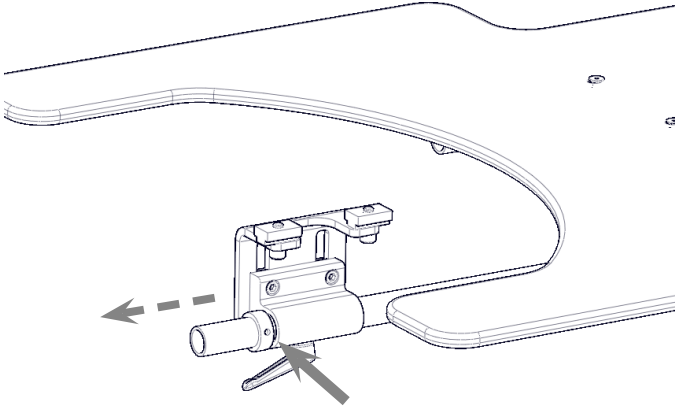




## Depth Adjustment

### 11.1

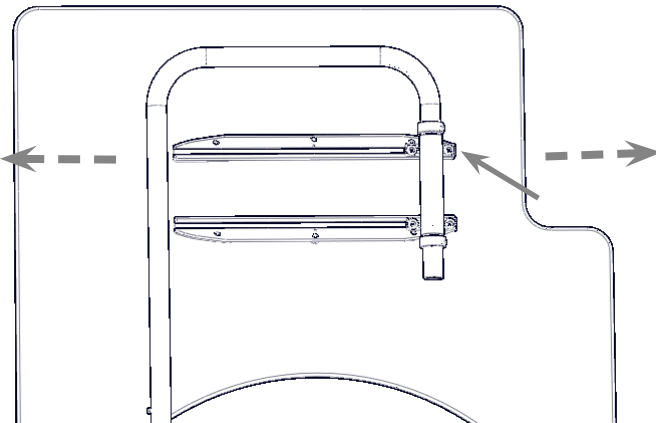
- Step One:** Loosen the stop collar using a 3mm T-Handle.
- Step Two:** Slide the tray to the correct position for user.
- Step Three:** Slide the stop collar against the cane to prevent unintentional movement of the tray. Lock the stop collar in place by using a 3mm T-Handle.



## Horizontal Adjustment

### 11.2

- Step One:** Loosen the M6 x 1 x 10mm Button Head Screws using a 4mm T-Handle.
- Step Two:** Slide the tray to the correct position for the user.
- Step Three:** Tighten the M6 x 1 x 10mm Button Head Screws using a 4mm T-Handle.



## Dealer Assistance

### 12.1

During first time use by the client, it is advised that the dealer or service technician assists and explains the configuration of user positioning to the customer (the user and/or the attendant). If needed, the dealer can make final adjustments.

## User Testing

### 12.2

It is important that the customer is fully aware of the installation of the Simple Solutions Tray, how to use it, and how it can be adjusted to fit the client comfortably. As a dealer, proceed as follows:

- Explain and show the customer how you have executed the installation and explain the function.

Have the user test the position of the Simple Solutions Tray:

- Is the hardware in the proper position for the client?
- Can the user safely operate all controls with minimal effort?

If needed, make any adjustments to the positioning.

Explain to the customer possible problems and how to address them.

## Conditions of Use

### 12.3

The Simple Solutions Tray is intended for use as installed by the dealer, in accordance to the installation instructions in this manual.

- The foreseen conditions of use are communicated by the dealer or service technician to the user and/or attendant during the first time use.
- If the usage conditions change significantly, please contact your dealer or a qualified service technician to avoid unintended damage.

## Cleaning

### 13.1

- Wash Lexan Sheet with a mild soap or detergent using a clean sponge or soft cloth
- Rinse well with clean water
- Do not scrub or use brushes with this product

#### WARNING

Do not use highly abrasive cleaners.  
Never scrape with squeegees or razor blades.  
Benzene, gasoline, acetone, or carbon tetrachloride should never be used on Lexan sheet products.

## Disinfecting

### 13.2

- Wipe gently with a cloth dampened with a household disinfectant.

## Maintenance

### 13.3

These care and guideline instructions will keep the hardware and covers in good condition for a longer period of time and prevent damage:

- Check and re-tighten all fasteners to the proper torque specifications on a regular basis. Reference the installation manual to find proper torque specs.
- Check weldments on tray for wear and ensure that tubing isn't bent or damaged.

#### CAUTION

Always check all mounting hardware, making sure each fastener is properly tightened before using the tray.

#### SAFETY

Replace or repair parts as needed.

#### CAUTION

The Simple Solutions Tray is intended to hold no more than 5lbs (2.27 kg) at a time is not intended to be a support surface or positioning device.

#### NOTICE

**Altering a tray in any way and/or improper installation will void the warranty.**











Stealth Products, LLC. • [info@stealthproducts.com](mailto:info@stealthproducts.com) • [www.stealthproducts.com](http://www.stealthproducts.com)  
+1(800) 965-9229 | +1(512) 715-9995 | 104 John Kelly Drive, Burnet TX 78611