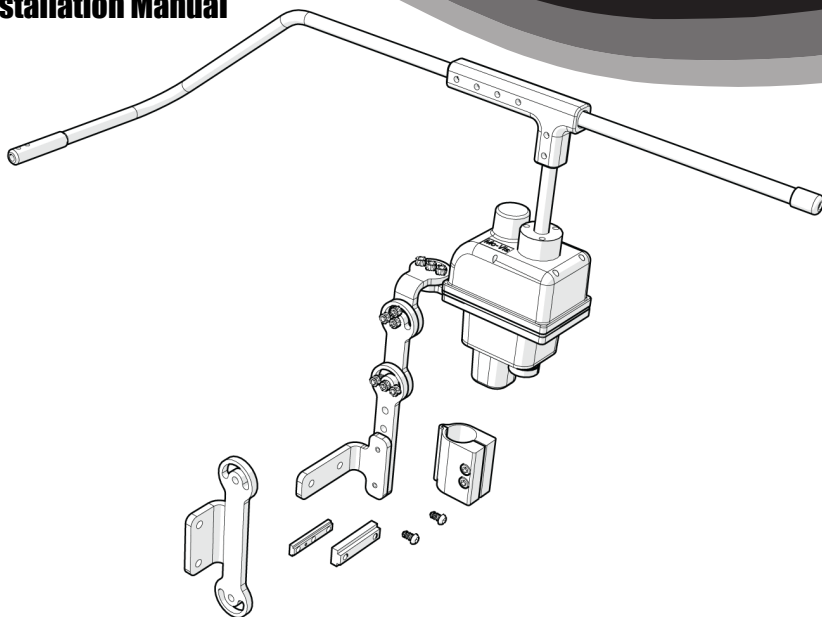




ALTERNATIVE
DRIVE
CONTROLS

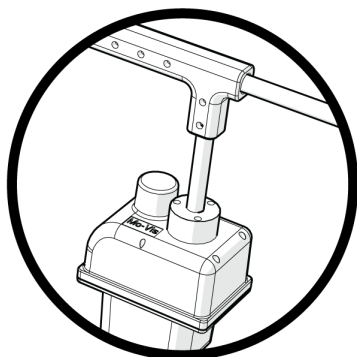
Stealth Products

Installation Manual



DBM100-1, DBM100-2, DBM100-3

Power Chin Boom Hardware for Quantum and
Permobil Chairs



INSTALLATION INSTRUCTIONS FOR

Stealth Products:: IDM-PCB-L and IDM-PCB-R

Stealth Commitment

1.1

Stealth Products strives for 100% customer satisfaction. Your complete satisfaction is important. Please contact us with feedback or suggested changes that will help improve the quality and usability of our products. You may reach us at:



Stealth Products, LLC
104 John Kelly Drive, Burnet, TX 78611
Phone: (512) 715-9995 Toll Free: 1(800) 965-9229
Fax: (512) 715-9954 Toll Free: 1(800) 806-1225
info@stealthproducts.com www.stealthproducts.com



MDSS GmbH
Schiffgraben 41
30175 Hannover, Germany



Installation Date: _____

Dealer: _____




Dealer Stamp:

Serial Number:

Warning Labels

2.1

Warnings are included for the safety of the user, client, operator and property. Please read and understand what the signal words **SAFETY**, **NOTICE**, **CAUTION**, **WARNING** and **DANGER** mean, how they could affect the user, those around the user, and property.

 DANGER	Identifies an imminent situation which (if not avoided) will result in severe injury, death, and property damage .
 WARNING	Identifies a potential situation which (if not avoided) will result in severe injury, death, and property damage .
 CAUTION	Identifies a potential situation which (if not avoided) will result in minor to moderate injury, and property damage .
<i>NOTICE</i>	Identifies important information not related to injury, but possible property damage .
SAFETY	Indicates steps or instructions for safe practices, reminders of safe procedures, or important safety equipment that may be necessary.

Limited Liability

2.2

Stealth Products, LLC accepts no liability for personal injury or damage to property that may arise from the failure of the user or other persons to follow the recommendations, warnings, and instructions in this manual.

Stealth Products does not hold responsibility of final integration of final assembly of product to end user. Stealth Products is not liable for user death or injury.

Testing

2.3

Initial setup and driving should be done in an open area free of obstacles until the user is fully capable of driving safely.

The hardware should always be tested without any person sitting in the wheelchair, and until every alteration of the physical installation or adjustment is complete.

1.0 Customer Satisfaction.....	i
1.1 Stealth Commitment.....	i
2.0 Warnings.....	ii
2.1 Warning Labels.....	ii
2.2 Limited Liability.....	ii
2.3 Testing.....	ii
3.0 Table of Contents.....	iii
4.0 Parts and Accessories.....	1
4.1 Mounting Hardware Parts.....	1
4.2 Tools.....	1
5.0 Installation Instructions for Quantum Chair.....	2
5.1 Horizontal Back Track.....	2
5.2 Vertical Side Track.....	3
5.3 Vertically on a Back Track.....	3
6.0 Installation Instructions for Permobil Chair.....	4
6.1 Installing onto a Permobil Chair.....	4
7.0 Installation Instructions for Cane Mount.....	5
7.1 Installing onto a Cane Mount.....	5
8.0 Power Chin Boom Installation.....	6
8.1 Installation of Motor Unit.....	6
9.0 Important Information.....	7
9.1 Installation for Vertical or Horizontal Mounting.....	7
9.2 Angle/Height Adjustment of Power Chin Boom.....	7
9.3 Vertical Adjustment of Power Chin Boom.....	8
9.4 Installing/Adjusting Chin Boom Hardware.....	9

10.0 Cable Installation.....10

 10.1 Motor Cable Installation.....10

11.0 Maintenance.....11

 11.1 Maintenance.....11

 11.2 Cleaning.....11

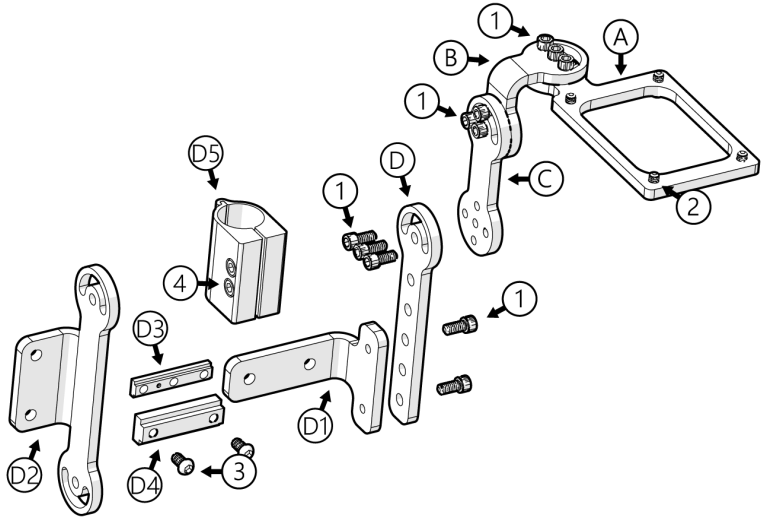
 11.3 Disinfecting.....11

12.0 Warranty.....12

 12.1 In Case of Product Failure.....12

Mounting Hardware Parts

4.1

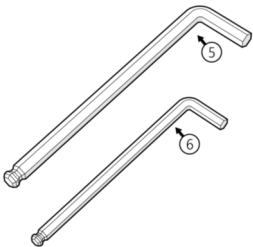


A	Front Rotation Chin Boom Mount
B	Chin Boom Extension Angled
C	Chin Boom Extension Straight
D	Track Chin Boom Slide
D1	Back Track Chin Boom Mount
D2	Cane/Track Chin Boom Mount
D3	Lateral Nut- Metric
D4	T-Nut Metric
D5	1" Cane Clamp

#	Product	Qty.
1	M6 x 1.0 x 12mm Socket Head Screw	11
2	M5 x .8 x 12mm Button Head Screw	4
3	M6 x 1.0 x 12mm Button Head Screw	2
3 ¹	M6 x 1.0 x 16mm Button Head Screw	2
4 ²	1/4-20 x 3/4 SHS	2

Tools Required (Not Included)

4.2



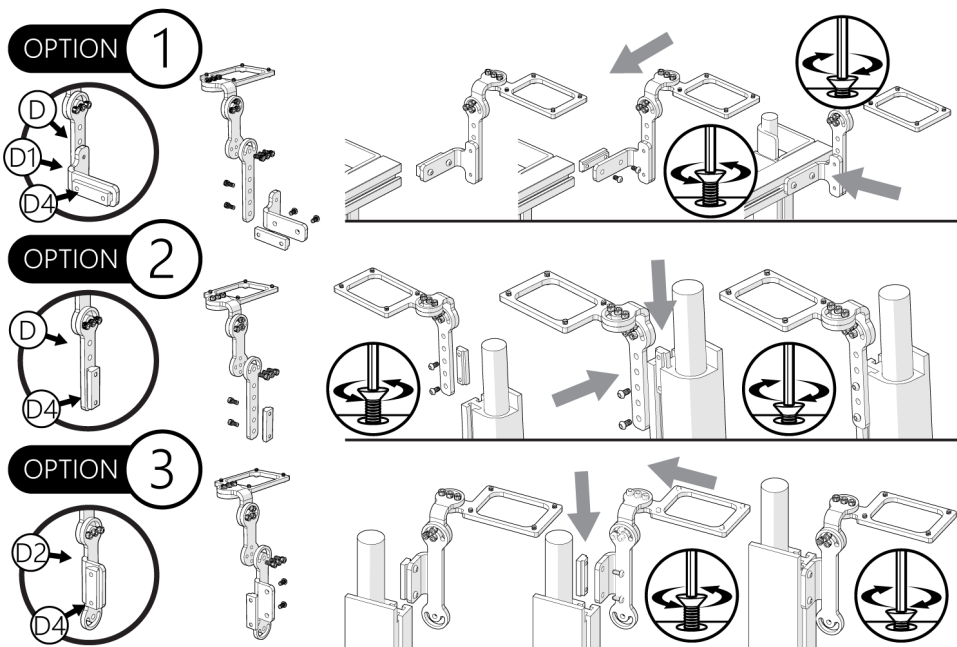
#	Product	Qty.
5	5mm T-Handle (#1)	1
6	4mm T-Handle (#'s 2 & 3)	1

1. Screws for the lateral track nut (D3) for mounting onto a Permobil require a smaller mm (12mm) screw.
2. 1" Cane Clamp is only provided when ordering the DBM100-3.

Installing onto a Quantum Chair

5.0

DM100-1 Power Chin Boom Hardware (Fig 5.1.1)



⚠ CAUTION

DO NOT OVERTIGHTEN SCREWS. This could cause wearing of screws or threads, causing the client to lose efficient control of device.

Option 1 - Horizontal Back Track

5.1

Step 1: Install T-Nut (D4) onto track mount on chair. Attach Back Track Chin Boom Mount (D1) onto track mount.

Step 2: Attach Track Chin Boom Slide (D) onto Back Track Chin Boom Mount (D1). Secure with screws.

Step 3: Secure Chin Boom Extension Angled to Track Chin Boom Slide. Adjust angle and tighten with screws.

Step 4: Mount Front Rotation Chin Boom Mount to Chin Boom Extension Angled. Set at desired angle and secure with screws.

* The Chin Boom Extension Straight is optional to mount this configuration.

Option 2 - Vertical Side Track

5.2

See figure 5.1.1 on page 2

Step 1: Slide t-nut (D4) to vertical side track. Mount Track Chin Boom Slide (D) to t-nut. Adjust height and secure with screws.

Step 2: Attach Chin Boom Extension Angled to Track Chin Boom Slide. Adjust angle of bracket and secure screws.

Step 3: Secure Front Rotation Chin Boom Mount to Chin Boom Extension Angled. Adjust angle and secure screws.

*The Chin Boom Extension Straight is optional to mount in this configuration.

Option 3 - Vertically on a Back Track

5.3

See figure 5.1.1 on page 2

Step 1: Slide t-nut (D4) onto vertical track on chair. Secure Cane/Track Chin Boom Mount (D2) to t-nut and tighten screws.

Step 2: Place Chin Boom Extension Angled onto Cane/Track Chin Boom . Adjust angle of bracket and secure. With screws.

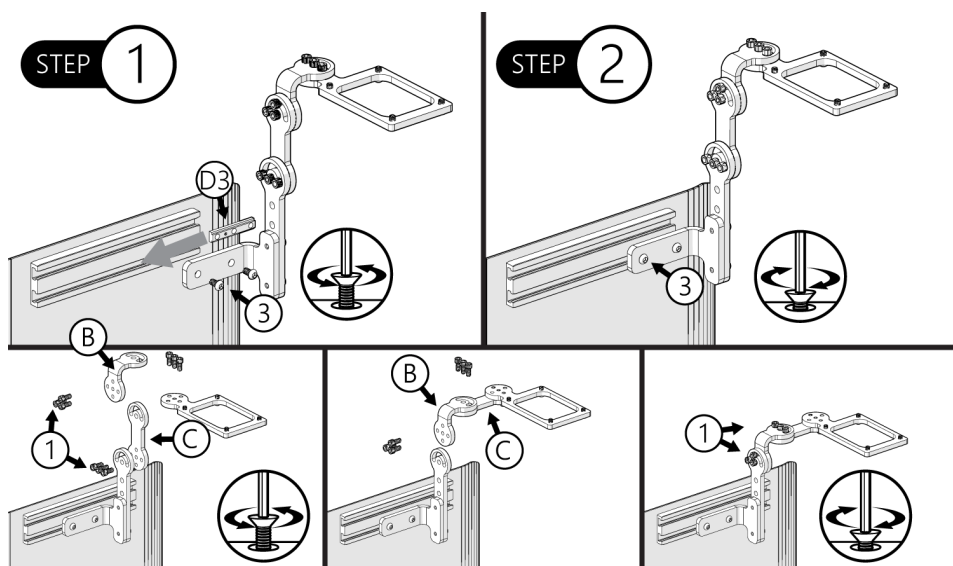
Step 3: Secure Front Rotation Chin Boom Mount to Chin Boom Extension Angled. Adjust angle and secure with screws. Do not overtighten.

* The Chin Boom Extension Straight is optional to mount this configuration.

Installing onto a Permobil Chair

6.1

DBM100-2 Power Chin Boom Hardware



Step 1: Mount lateral track nut (D3) to chair. Place in desired location. Attach Back Track Chin Boom Mount (3) to lateral track nut. Secure with screws (3).

Step 2: Attach Track Chin Boom Slide to Back Track Chin Boom Mount. Place at desired height and secure with screws (1).

Step 3: Mount Chin Boom Extension Straight to Track Chin Boom Slide. Adjust angle of bracket and secure with screws (1).

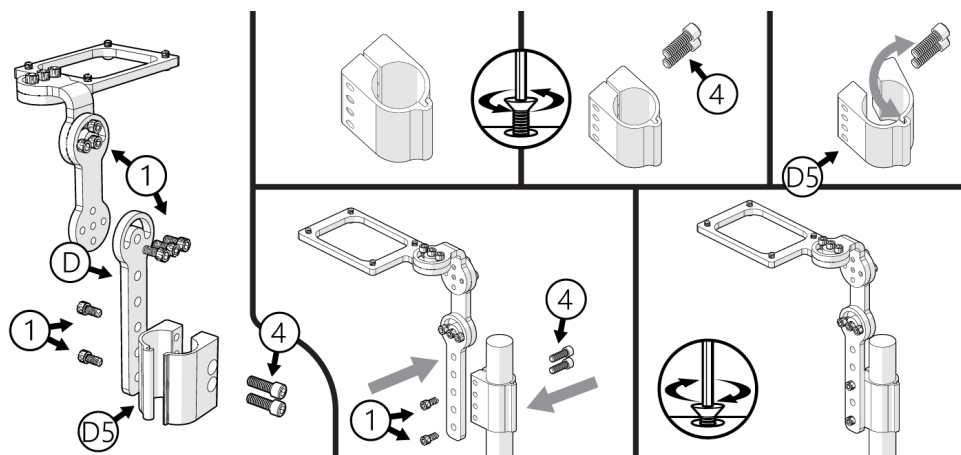
Step 4: Place Chin Boom Extension Angled onto Chin Boom Extension Straight. Adjust the angle and secure with screws (1).

Step 5: Attach Front Rotation Chin Boom Mount to Chin Boom Extension Angled. Adjust direction of bracket and secure with screws (1).

Installing onto a Cane Mount

7.1

DBM100-3 Power Chin Boom Hardware



Step 1: Place Cane Clamp (D5) onto chair. Adjust to desired height and secure with screws (4).

Step 2: Attach Track Chin Boom Slide (D) to cane clamp (D5). Place at desired height and secure with screws (1).

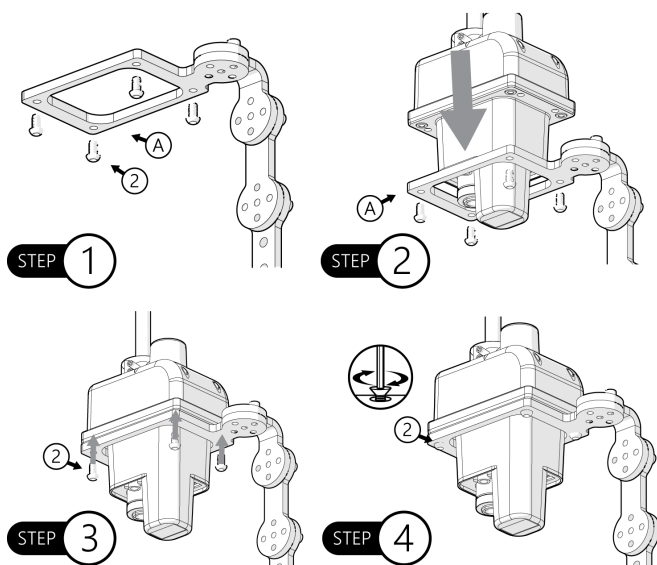
Step 3: Secure Chin Boom Extension Straight onto Track Chin Boom Slide (D). Adjust angle of bracket and tighten screws (1).

Step 4: Attach Chin Boom Extension Angled to Chin Boom Extension Straight. Adjust angle and secure screws (1).

Step 5: Mount Front Rotation Chin Boom Mount onto Chin Boom Extension Angled. Adjust direction and secure with screws (1).

Installation of Motor Unit

8.1



Step 1: Ensure that the Front Rotation Chin Boom Mount (A) is properly secured to chin boom hardware.

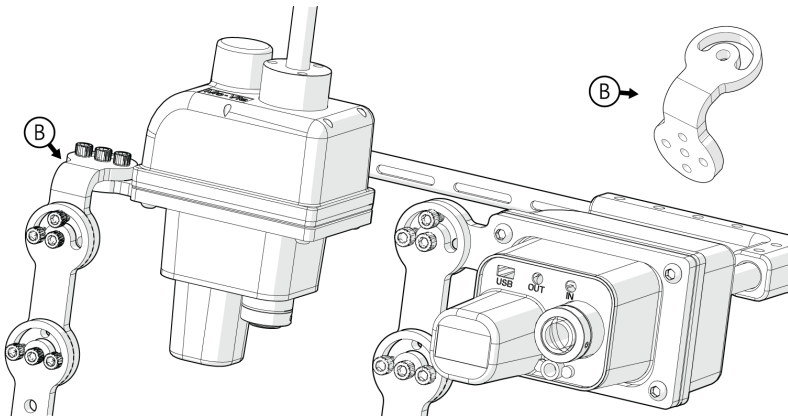
Step 2: Insert Chin Boom Motor Unit into mount (A).

Step 3: Place 12mm Button Head Screws (2) in pre-drilled holes.

Step 4: Secure screws (2) into place. Do not overtighten screws.

Installation for Vertical or Horizontal Mounting

9.1

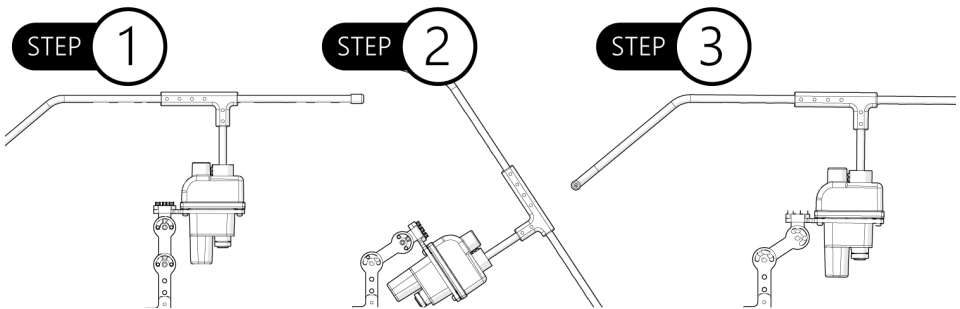


When mounting the Motor Unit for a horizontal movement of the arm, attach angled bracket (B) to straight extension hardware and secure with screws.

When mounting the Motor Unit for a vertical movement of the arm, angled bracket (B) will not be attached to hardware. Attach and secure Motor Unit directly to extension straight hardware, adjust to desired angle and secure with screws.

Angle/Height Adjustment of Power Chin Boom

9.2



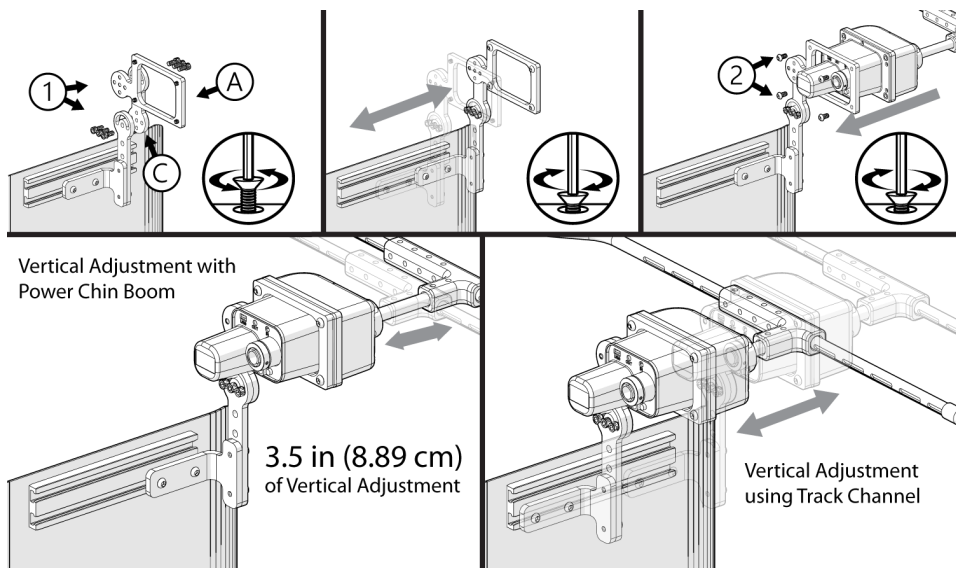
Step 1 Observe Power Chin Boom unit to see if the placement is correct for the user.

Step 2 For angling the chin boom back, loosen screws on Track Chin Boom Slide until unit is at desired angle for end user.

Step 3 Retighten screws once the chin boom is at desired angle. Do not overtighten screws.

Vertical Adjustment of Power Chin Boom

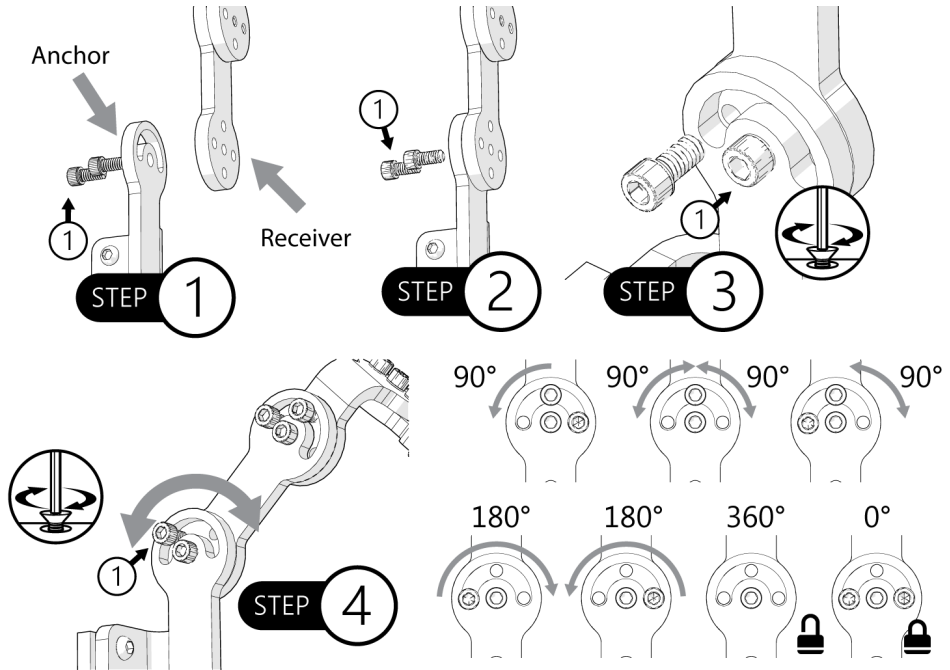
9.3



- Step 1:** For vertical adjustment on a track mount, loosen screws (1) on brackets (C) & (A). Once track is at desired location on the chair, tighten screws.
- Step 2:** Install motor unit onto mount and secure with screws (2).
- Step 3:** For vertical adjustment of the arm, loosen set screws from T-Bar Rod. Adjust rod to desired length and retighten screws.
- Step 4:** If Power Chin Boom arm still needs adjustment, loosen screws on T- Connection and set to desired location. Retighten screws.

Installing/Adjusting Chin Boom Hardware

9.4



- Step 1:** When attaching brackets to one another, an anchor top **MUST** always match up with a receiver top.
- Step 2:** When anchor and receiver parts are matched, use screws (1) and secure.
- Step 3:** Insert one screw (1) into middle hole of anchor. Second and third screws can be placed in any of remaining holes on receiver.
- Step 4:** Adjust brackets to desired angle before fully tightening and screwing in remaining screws.

Motor Cable Installation

10.1

Use the following pictures as reference to plug in the Power Chin Boom Motor Cable to your Quantum or Permobil chair.

1. Remove cover at base of your Quantum or Permobil chair.



2. Locate the power plug on the Quantum chair. Remove cap off of plug to attach IC24PS-QL Power Source, attached to the Power Chin Boom Motor Cable.



If you have a Permobil chair, locate the power plug and remove.



3. Attach end of Power Chin Boom Motor cord with IC24PS-QL or IC24PS-RN pig tail attachment to the power plug of the Quantum or Permobil chair.



SAFETY

For Power Chin Boom maintenance and guidelines, refer to the device's user manual.

Maintenance**11.1**

- Check on a regular basis that screws are tight. Gently tighten any screws that may have become loose.
- Maintain that the hardware is clean and free of dust.

Cleaning**11.2**

- Wash away surface dirt and grime with a mild dish detergent and rinse away.
- Moisten a soft cloth with water to rub away any remaining dirt.
- Rinse thoroughly with clean water.

Disinfecting**11.3**

- Use a damp cloth with any disinfectant detergent and lightly rub hardware surface.
- Rinse thoroughly with clean water.

Our products are designed, manufactured, and produced to the highest of standards. If any defect in material or workmanship is found, Stealth Products will repair or replace the product at our discretion. Any implied warranty, including the implied warranties of merchantability and fitness for a particular purpose, shall not extend beyond the duration of this warranty. Stealth Products, LLC does not warrant damage due to, but not limited to:

- Misuse, abuse, or misapplication of products.
- Modification of product without written approval from Stealth Products, LLC.
- Any alteration or lack of serial number, where applicable, will automatically void this warranty.
- Stealth Products, LLC is liable for replacement parts only.
- Stealth Products, LLC is not liable for any incurred labor costs.

No person is authorized to alter, extend, or waive the warranties of Stealth Products, LLC.

Stealth Products warrants against failure due to defective materials or workmanship:

Covers: 2 years

Hardware: 5 years

Electronics: 3 years

In Case of Product Failure

12.1

In the event of product failure covered by our warranty, please follow the procedures outlined below:

1. Call Stealth at +1 (512) 715-9995 or toll free +1-800-965-9229.
2. Request the Returns Department or obtain an RA from the Returns Department and follow department or documentation instructions.

[illegible]

[illegible]



Stealth Products, LLC. • info@stealthproducts.com • www.stealthproducts.com
+1(800) 965-9229 | +1(512) 715-9995 | 104 John Kelly Drive, Burnet TX 78611