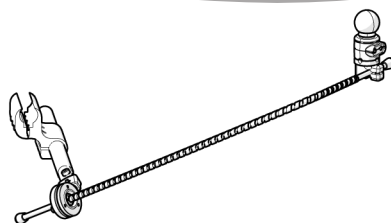
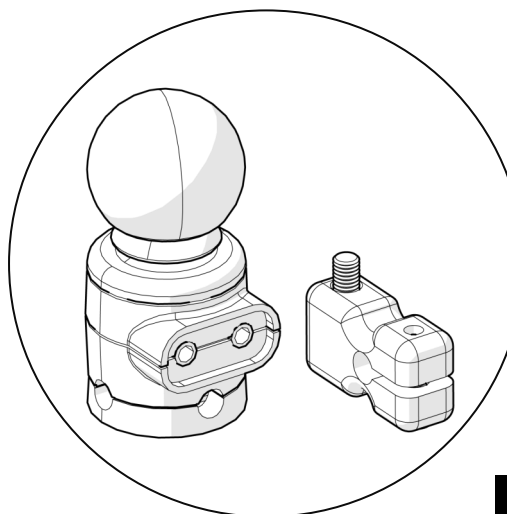




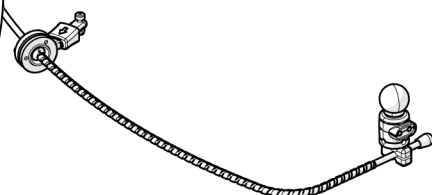
Mounting
Hardware

Stealth Products

Installation Manual



ARMS260 SERIES

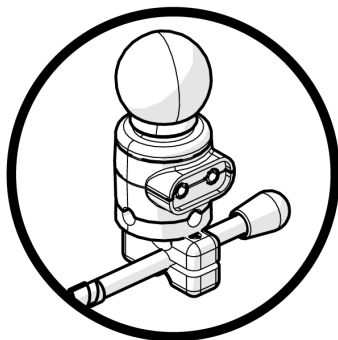


SM600 SERIES

SM600-661M

Multi Joystick Mount

Compatible with ARMS260 / SM600 Series



INSTALLATION INSTRUCTIONS FOR

Stealth Products: IDM-MULTI-9

mo-Vis: P002-61 Multi Joystick Mini

Stealth Commitment

1.1

Stealth Products strives for 100% customer satisfaction. Your complete satisfaction is important. Please contact us with feedback or suggested changes that will help improve the quality and usability of our products. You may reach us at:



Stealth Products, LLC

104 John Kelly Drive, Burnet, TX 78611

Phone: (512) 715-9995

Toll Free: 1(800) 965-9229

Fax: (512) 715-9954

Toll Free: 1(800) 806-1225

info@stealthproducts.com

www.stealthproducts.com



MDSS GmbH

Schiffgraben 41

30175 Hannover, Germany



Installation Date: _____

Dealer: _____



Dealer Stamp:

Serial Number:

Warning Labels

2.1

Warnings are included for the safety of the user, client, operator and property. Please read and understand what the signal words **SAFETY**, **NOTICE**, **CAUTION**, **WARNING** and **DANGER** mean, how they could affect the user, those around the user, and property.

 DANGER	Identifies an imminent situation which (if not avoided) will result in severe injury, death, and property damage .
 WARNING	Identifies a potential situation which (if not avoided) will result in severe injury, death, and property damage .
 CAUTION	Identifies a potential situation which (if not avoided) will result in minor to moderate injury, and property damage .
NOTICE	Identifies important information not related to injury, but possible property damage .
SAFETY	Indicates steps or instructions for safe practices, reminders of safe procedures, or important safety equipment that may be necessary.

Limited Liability

2.2

Stealth Products, LLC accepts no liability for personal injury or damage to property that may arise from the failure of the user or other persons to follow the recommendations, warnings, and instructions in this manual.

Stealth Products does not hold responsibility of final integration of final assembly of product to end user. Stealth Products is not liable for user death or injury.

Testing

2.3

Initial setup and driving should be done in an open area free of obstacles until the user is fully capable of driving safely.

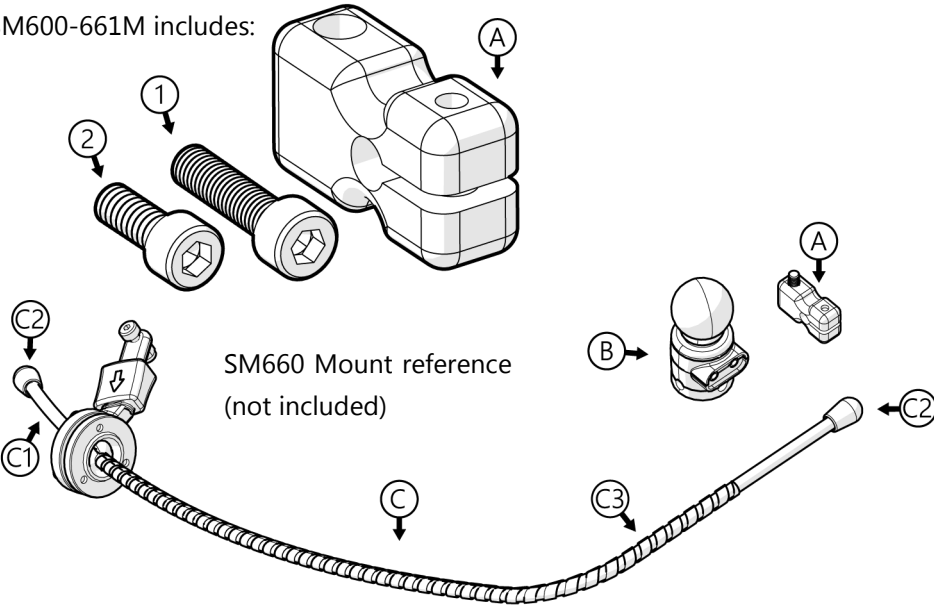
The hardware should always be tested without any person sitting in the wheelchair, and until every alteration of the physical installation or adjustment of the joystick is complete.

1.0 Customer Satisfaction	i
1.1 Stealth Commitment	i
2.0 Warnings	ii
2.1 Warning Labels	ii
2.2 Limited Liability	ii
2.3 Testing	ii
3.0 Table of Contents.....	iii
4.0 Parts and Accessories	1
4.1 Mounting Hardware Parts	1
4.2 Tools	1
5.0 Installation Instructions	2
5.1 Installing Mount and Joystick	2
5.2 Angle Adjustment	3
5.3 Horizontal Adjustment	3
6.0 Functioning.....	4
6.1 Basic Function.....	4
7.0 Maintenance	5
7.1 Maintenance	5
7.2 Cleaning	5
7.3 Disinfecting	5
8.0 Warranty	6
8.1 In Case of Product Failure	6

Mounting Hardware Parts

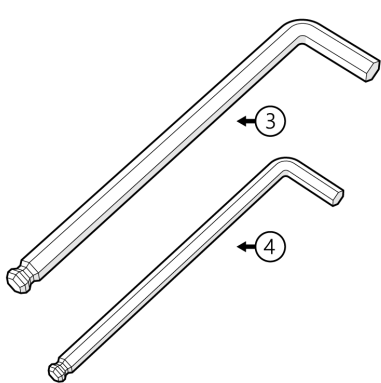
4.1

SM600-661M includes:



Tools Required (Not included)

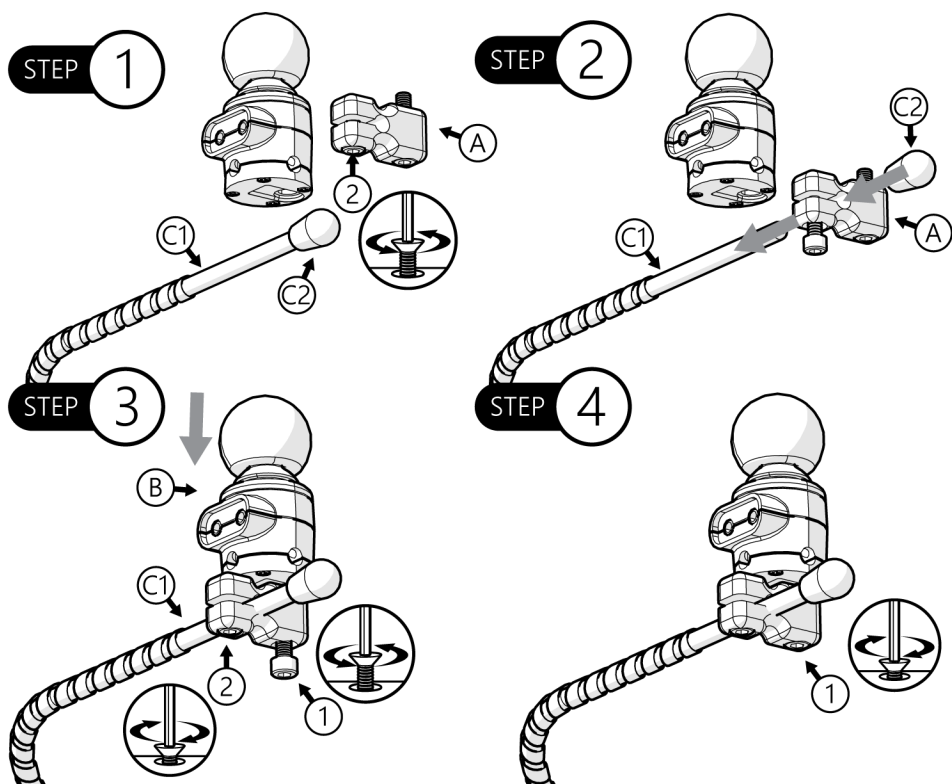
4.2



A SM600-661M Block	
B Multi Joystick ¹	
C SM600 Series ¹	C1 Lateral Rod
1 M5 x 0.8 x 20mm	C2 Safety Cap
2 10-24 x 1/2" SHS	C3 Spiral Wrap
3 5/32 Allen (Hex Key)	
4 4mm Allen (Hex Key)	
1. Not included	

⚠ CAUTION

DO NOT OVER TIGHTEN SCREWS. This could cause wearing of screws or joystick threads, causing the client to lose efficient control.

Installing Joystick**5.1**

Step 1. Remove safety cap (C2) from swing away rod (C1). Loosen clamping screw (2).

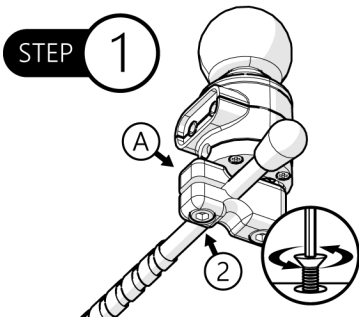
Step 2. Slide block (A) onto the rod (C1).

Step 3. Adjust horizontal position where desired and tighten the clamping screw (2). Replace safety cap (C2). Hold 20mm screw (1) and position Multi Joystick (B) in place.

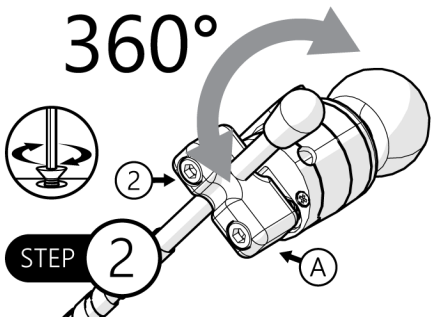
Step 4. Tighten the screw (1) with 4mm Allen Wrench (Hex Key), but do not over tighten.

Angle Adjustment

5.2



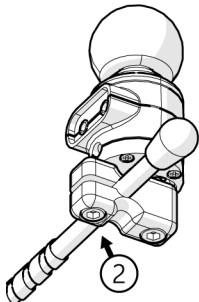
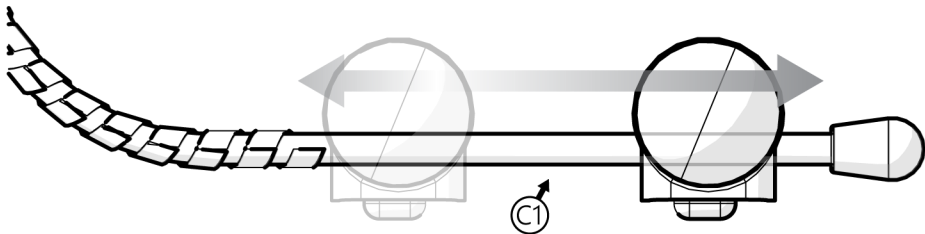
Step 1: Loosen screw (2).



Step 2: Rotate block (A) in a 360° range to desired angle. Tighten screw (2) again.

Horizontal Alignment

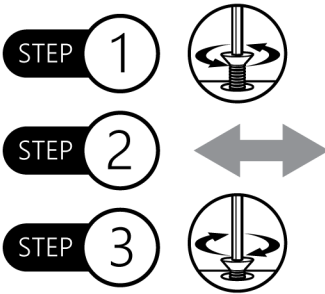
5.3



Step 1: Loosen clamp screw (2).

Step 2: Slide block (A) towards the desired direction on the arm (C1).

Step 3: Tighten screw (2) again.



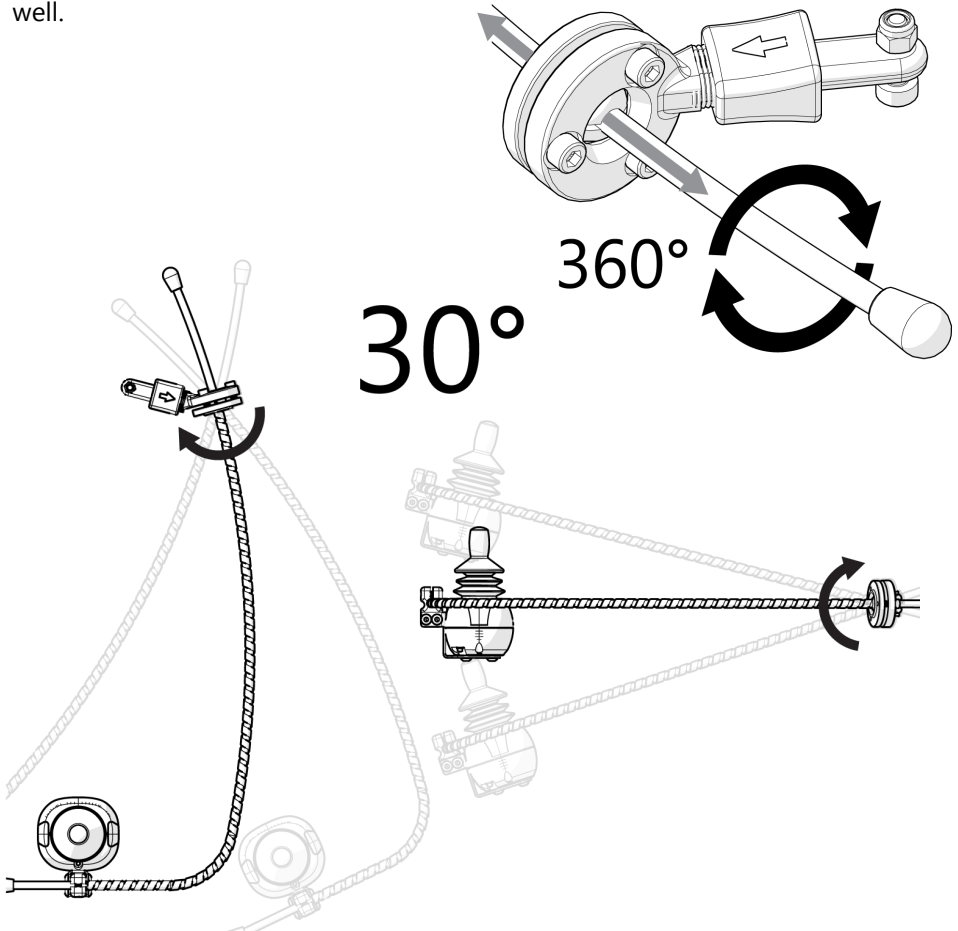
NOTE

The spiral wrap and rod can be cut for better set up.

Basic Function

6.1

The SM661M/ARMS260 Swing Away system allows versatile and on demand adjustment. Rod can be bent and cut to accommodate specifications. It rests within the swing away ball which allows for a 30° adjustment in any direction, and rotates 360° on its own axis as well.



⚠ CAUTION

DO NOT bend or cut rod with client on chair. Repeated rod bending will result in breakage with a possible whiplash effect.

When bending, **ALWAYS** bend rod with the bending force away from you.

SAFETY

For joystick maintenance guidelines refer to the device's user manual.

Maintenance**7.1**

- Check every 6 months that screws are tight. Gently tighten any screws that may have become loose.
- Maintain that the hardware is clean and free of dust.

Cleaning**7.2**

- Wash away surface dirt and grime with a mild dish detergent and rinse away.
- Moisten a soft cloth with water to rub away any remaining dirt.
- Rinse thoroughly with clean water.

Disinfecting**7.3**

- Use a damp cloth with any disinfectant detergent and lightly rub hardware surface.
- Rinse thoroughly with clean water.

Our products are designed, manufactured, and produced to the highest of standards. If any defect in material or workmanship is found, Stealth Products will repair or replace the product at our discretion. Any implied warranty, including the implied warranties of merchantability and fitness for a particular purpose, shall not extend beyond the duration of this warranty. Stealth Products, LLC does not warrant damage due to, but not limited to:

- Misuse, abuse, or misapplication of products.
- Modification of product without written approval from Stealth Products, LLC.
- Any alteration or lack of serial number, where applicable, will automatically void this warranty.
- Stealth Products, LLC is liable for replacement parts only.
- Stealth Products, LLC is not liable for any incurred labor costs.

No person is authorized to alter, extend, or waive the warranties of Stealth Products, LLC.

Stealth Products warrants against failure due to defective materials or workmanship:

Covers: 2 years

Hardware: 5 years

Electronics: 3 years

In Case of Product Failure

8.1

In the event of product failure covered by our warranty, please follow the procedures outlined below:

1. Call Stealth at +1 (512) 715-9995 or toll free +1-800-965-9229.
2. Request the Returns Department or obtain an RA from the Returns Department and follow department or documentation instructions.

[illegible]



Stealth Products, LLC. • info@stealthproducts.com • www.stealthproducts.com
+1(800) 965-9229 | +1(512) 715-9995 | 104 John Kelly Drive, Burnet TX 78611