



Stealth Products

Installation Manual



Width Adjustable ELITE Mounting Hardware
For Aluminum & Carbon Series Back Supports

Stealth Products strives for 100% customer satisfaction. Your complete satisfaction is important. Please contact us with feedback or suggested changes that will help improve the quality and usability of these products. You may reach us at:



Stealth Products, LLC

104 John Kelly Drive, Burnet, TX 78611

Phone: (512) 715-9995

Toll Free: 1(800) 965-9229

Fax: (512) 715-9954

Toll Free: 1(800) 806-1225

info@stealthproducts.com

www.stealthproducts.com



MDSS GmbH

Schiffgraben 41

30175 Hannover, Germany



General

Read and understand all instructions prior to the use of the product. Failure to adhere to instructions and warnings in this document may result in property damage, injury, or death. Product misuse due to failure of the following instructions will void the warranty.

Immediately discontinue use if any function is compromised, parts are missing, loose, or shows signs of excessive wear. Consult with your supplier for repair, adjustment, or replacement.

If this document contains information you do not understand, or there are concerns about safety or operation, contact your supplier.

Important Information!

All persons responsible for fitting, adjustment, and daily use of the devices discussed in these instructions must be familiar with and understand all safety aspects of the devices mentioned. In order for our products to be used successfully, you must:

- Read and understand all instructions and warnings.
- Maintain our products according to our instructions on care and maintenance.
- Devices should be installed and adjusted by a trained technician.

Ordering Documentation

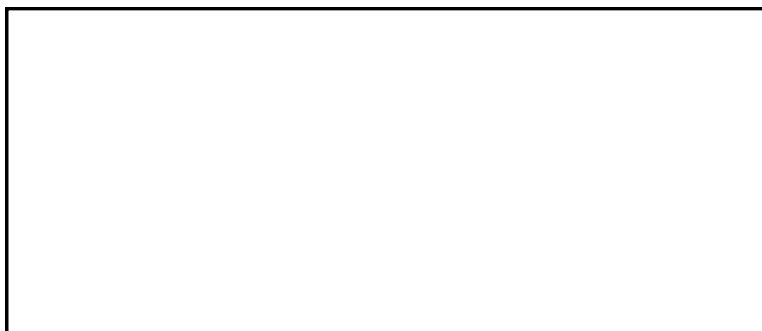
You can download additional copies of this manual on the Stealth website:

<https://stlpro.site/stealth-docs> and search "*Width Adjustable Elite Mounting Hardware*".

Installation Date: _____

Dealer: _____

Dealer Stamp:

A large, empty rectangular box with a black border, intended for a dealer stamp.

Serial Number:

A large, empty rectangular box with a black border, intended for a serial number.

No person is authorized to alter, extend, or waive the warranties of Stealth Products, LLC.

Stealth Products warrants against failure due to defective materials or workmanship:

Covers: 2 years

Hardware: 5 years

Electronics: 3 years

Limitations

4.1

Stealth Products, LLC does not warrant damage due to, but not limited to:

- Misuse, abuse, or misapplication of products.
- Modification of product without written approval from Stealth Products, LLC.
- Any alteration or lack of serial number, where applicable, will automatically void this warranty.
- Stealth Products, LLC is liable for replacement parts only.
- Stealth Products, LLC is not liable for any incurred labor costs.

NOTICE

Any substitutions of supplied hardware void the warranty. Misuse of items and "acts of nature" (ex. Flood, tornado, etc.) are not covered by the warranty.

1.0 Customer Satisfaction	i
2.0 Important Information.....	ii
3.0 Introduction	iii
4.0 Warranty.....	iv
4.1 Limitations.....	iv
5.0 Table of Contents	v
6.0 Warning Labels.....	vi
6.1 Warning Labels.....	vi
6.2 Limited Liability	vi
6.3 Testing	vi
7.0 Parts and Accessories	vii
7.1 Tools Required for Installation & Adjustment	vii
7.2 Parts Required	vii
7.3 4-Point PRO Mounting Hardware Assembly	vii
7.4 Torque Specification	viii
8.0 Installation Instructions	1
8.1 Hardware Installation	1
8.2 Width Adjustment	2
9.0 First Time Use	3
9.1 Dealer Assistance.....	3
9.2 User Testing	3
9.3 Conditions of Use.....	3
10.0 Maintenance	4
10.1 Cleaning	4
10.2 Disinfection.....	4

Warning Labels

6.1

Warnings are included for the safety of the user, client, operator and property. Please read and understand what the signal words **SAFETY**, **NOTICE**, **CAUTION**, **WARNING** and **DANGER** mean, how they could affect the user, those around the user, and property.

DANGER

Identifies an **imminent** situation which (if not avoided) will result in **severe injury, death, and property damage**.

WARNING

Identifies a **potential** situation which (if not avoided) will result in **severe injury, death, and property damage**.

CAUTION

Identifies a **potential** situation which (if not avoided) will result in **minor to moderate injury, and property damage**.

NOTICE

Identifies important information not related to injury, but possible **property damage**.

SAFETY

Indicates steps or instructions for safe practices, reminders of safe procedures, or important safety equipment that may be necessary.

Limited Liability

6.2

Stealth Products, LLC accepts no liability for personal injury or damage to property that may arise from the failure of the user or other persons to follow the recommendations, warnings, and instructions in this manual.

Testing

6.3

Initial setup and driving should be done in an open area free of obstacles until the user is fully capable of driving safely.

The product should always be tested without any person sitting in the wheelchair until every alteration of the physical installation or adjustment is complete.

Tools Required for Installation

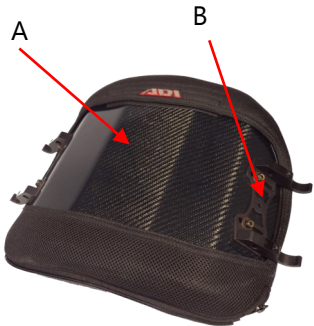
7.1

- 4mm Allen Wrench
- 10mm wrench

Parts Required

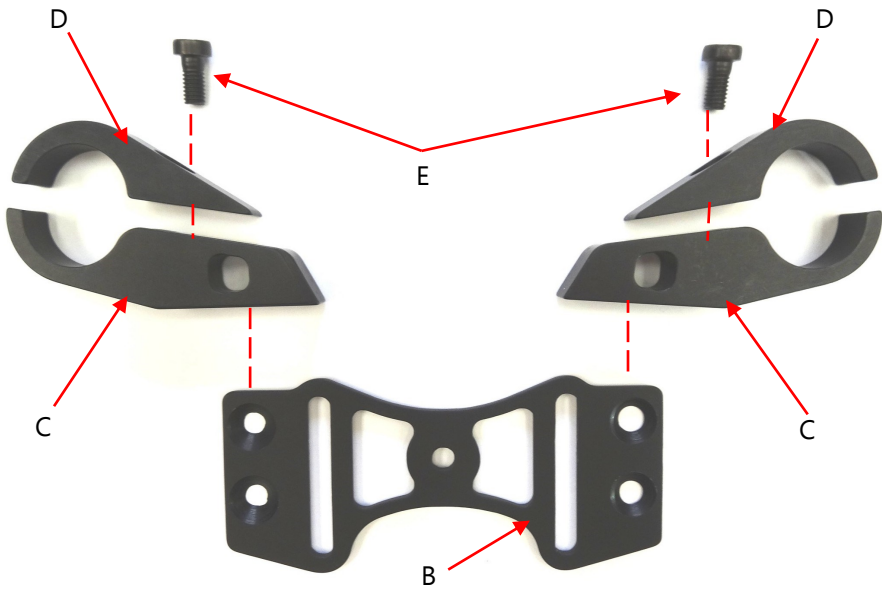
7.2

- Back Support Shell, 1 each (A)
- Width Adjustable Place, 2 each (BR5014, attached to back) (B)
- Fixed Clamp, 4 each (BR2009) (C)
- Universal Cap, 4 each (BR2011) (D)
- 12mm Socket Head Screw, 4 each (HBR007) (E)



4 Point PRO Mounting Hardware Assembly

7.3

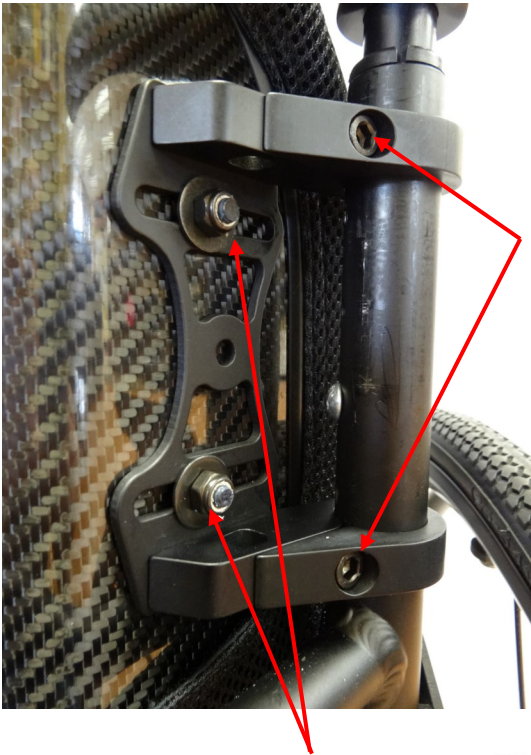


NOTICE

Only use the hardware supplied with the ADI back on the ADI back. Do not substitute any other screws, brackets, or clamps. Use of alternative hardware or mounting brackets void all warranties.

Torque Specification

7.4



Part Number: HBR007
M5 x 12mm Socket Head Screw
Use: 4mm Drive Allen Wrench
Torque Spec: 77.0 in-lbs/8.7 N-m

Part Number: BR5001
Stud Plate
Use: 10mm Hex Socket or Wrench
Torque Spec: 117 in-lbs/13.2 N-m



⚠ CAUTION

If you are able to fold the back canes, the back should be in the folded position when transporting the wheelchair, especially before loading for air travel.

Hardware Installation

8.1

1. Remove the existing wheelchair back according to the original manufacturer's instructions.
2. Visually determine the desired height of the back support.
3. Mark on the wheelchair back posts the desired location of mounting hardware.
4. Using the 12mm bolts (HBR007), attach all four universal caps (BR2011).

⚠ CAUTION Do not fully tighten.

5. Adjust aback vertically for desired back support height.
6. Secure the back by tightening each bolt to the proper torque specifications.

Step 2



Step 3



Step 4



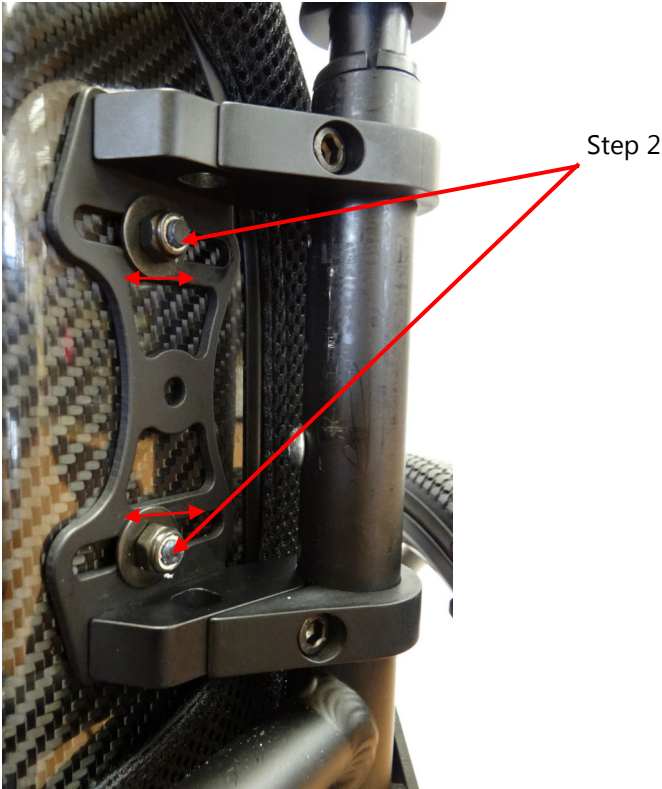
Step 6



Width Adjustment

8.2

1. Remove fabric cover from back support.
2. On each side of the hardware, loosen the top and bottom nuts (as shown), using a 4mm Allen Wrench and a 10mm wrench.
3. Adjust hardware inward or outward to achieve required mounting hardware width.
4. After final adjustments are complete, tighten all screws to the proper torque specification.



CAUTION

When positioning an ADI back, the interior portion of the back support should be positioned to make a contact at the PSIS to provide optimal pelvic support and trunk control.

Dealer Assistance

9.1

During first time use by the client, it is advised that the dealer or service technician assists and explains the set-up to the customer (the user and/or the attendant). If needed, the dealer can make final adjustments.

CAUTION

ADI backs may not fit every chair. Please consult your clinician or supplier providing you equipment.

CAUTION

Do not attach the ADI backs with the user in the chair.

User Testing

9.2

It is important that the customer is fully aware of the installation, how to use it, and what can be adjusted in order to gain as much mobility as possible. As a dealer, proceed as follows:

- Explain and show the customer how you have executed the installation, and explain the function of the hardware.
- If needed, adjust the hardware to the proper position.
- Explain to the customer possible problems and how to address them.

CAUTION

Do not use ADI back during vehicle transportation.

Conditions of Use

9.3


The ADI hardware is intended for use as installed by the dealer, in accordance to the installation instructions in this manual.

- The foreseen conditions of use are communicated by the dealer or service technician to the user and/or attendant during the first time use.
- If the usage conditions change significantly, please contact your dealer or a qualified service technician to avoid excessive wear and tear or unintended damage.

Cleaning


10.1

- Use a soft cloth to clean the back shell.
- Hand wash the foam pad cover with mild, soapy water or detergent and let dry.
- Foam pad should NOT get wet.

 **WARNING** Do not hand wash in water temperatures above 160°F (70°C).

CAUTION

Institution **MUST** clean and disinfect product between multiple patient uses.

 **WARNING** Do not wash or machine dry.

Disinfection


10.2

- Wipe gently with a cloth dampened with a household disinfectant.
- Allow foam to air dry thoroughly.

 **WARNING** Do not immerse the foam in water.

SAFETY

Always check all mounting hardware, making sure each fastener is properly tightened before using the back support.

 **WARNING** 250 lbs. (113.40 kg) user weight limit.

NOTICE

Altering an ADI back in any way and/or improper installation will void the warranty.

a

This image shows a full page of blank handwriting practice paper. It features 20 evenly spaced, horizontal blue lines running across the entire width of the page. The lines are thin and consistent in color and thickness, providing a guide for letter height and placement. There are no margins, text, or other markings on the paper.



Stealth Products, LLC. • info@stealthproducts.com • www.stealthproducts.com
+1(800) 965-9229 | +1(512) 715-9995 | 104 John Kelly Drive, Burnet TX 78611