



Stealth Products[®]

Installation Manual



Basic Release

Stealth's User Manual and Maintenance Guide for
ADI Basic Release Hardware for Aluminum Backs

Stealth Products strives for 100% customer satisfaction. Your complete satisfaction is important. Please contact us with feedback or suggested changes that will help improve the quality and usability of these products. You may reach us at:



Stealth Products, LLC

104 John Kelly Drive, Burnet, TX 78611

Phone: (512) 715-9995

Toll Free: 1(800) 965-9229

Fax: (512) 715-9954

Toll Free: 1(800) 806-1225

info@stealthproducts.com

www.stealthproducts.com



MDSS GmbH

Schiffgraben 41

30175 Hannover, Germany



General

Read and understand all instructions prior to the use of the product. Failure to adhere to instructions and warnings in this document may result in property damage, injury, or death. Product misuse due to failure of the following instructions will void the warranty.

Immediately discontinue use if any function is compromised, parts are missing, loose, or shows signs of excessive wear. Consult with your supplier for repair, adjustment, or replacement.

If this document contains information you do not understand, or there are concerns about safety or operation, contact your supplier.

Important Information!

All persons responsible for fitting, adjustment, and daily use of the devices discussed in these instructions must be familiar with and understand all safety aspects of the devices mentioned. In order for our products to be used successfully, you must:

- Read and understand all instructions and warnings.
- Maintain our products according to our instructions on care and maintenance.
- Devices should be installed and adjusted by a trained technician.

Ordering Documentation

You can download additional copies of this manual on the Stealth website: <https://stlpro.site/stealth-docs> and search for "*Basic Release Hardware*".

Installation Date: _____

Dealer: _____

Dealer Stamp:

Serial Number:

Our products are designed, manufactured, and produced to the highest of standards. If any defect in material or workmanship is found, Stealth Products will repair or replace the product at our discretion. Any implied warranty, including the implied warranties of merchantability and fitness for a particular purpose, shall not extend beyond the duration of this warranty. Stealth Products, LLC does not warrant damage due to, but not limited to:

- Misuse, abuse, or misapplication of products.
- Modification or product without written approval from Stealth Products, LLC.
- Any alteration or lack of serial number, where applicable, will automatically void this warranty.
- Stealth Products, LLC is liable for replacement parts only.
- Stealth Products, LLC is not liable for any incurred labor costs.

No person is authorized to alter, extend, or waive the warranties of Stealth Products, LLC.

Stealth Products warrants against failure due to defective materials or workmanship:

Covers: 2 years

Hardware: 5 years

Electronics: 3 years

In Case of Product Failure

In the event of product failure covered by our warranty, please follow the procedures outlined below:

1. Call Stealth at +1 (512) 715-9995 or toll free +1-800-965-9229.
2. Request the Returns Department or obtain an RA from the Returns Department and follow department or documentation instructions.

1.0 Customer satisfaction	i
2.0 Important information	ii
3.0 Introduction	iii
4.0 Warranty	iv
4.1 Limitations	iv
5.0 Table of Contents	v
6.0 Warning Labels	vi
6.1 Warning Labels	vi
6.2 Limited Liability	vi
6.3 Testing	vi
7.0 Parts & Accessories	1
7.1 Tools Required	1
7.2 Parts Required	1
7.3 Torque Specification	1
8.0 Installation	2
8.1 Step 1	2
8.2 Step 2	3
8.3 Step 3	4
Height Adjustment	4
Width Adjustment	4
Angle Adjustment	5
Depth Adjustment	5
9.0 First Time Use	6
9.1 Dealer Assistance	6
9.2 User Testing	6
9.3 Conditions of Use	6
10.0 Maintenance	7
10.1 Cleaning	7
10.2 Disinfection	7

Warning Labels

6.1

Warnings are included for the safety of the user, client, operator and property. Please read and understand what the signal words **SAFETY**, **NOTICE**, **CAUTION**, **WARNING** and **DANGER** mean, how they could affect the user, those around the user, and property.

DANGER

Identifies an **imminent** situation which (if not avoided) will result in **severe injury, death, and property damage**.

WARNING

Identifies a **potential** situation which (if not avoided) will result in **severe injury, death, and property damage**.

CAUTION

Identifies a **potential** situation which (if not avoided) will result in **minor to moderate injury, and property damage**.

NOTICE

Identifies important information not related to injury, but possible **property damage**.

SAFETY

Indicates steps or instructions for safe practices, reminders of safe procedures, or important safety equipment that may be necessary.

Limited Liability

6.2

Stealth Products, LLC accepts no liability for personal injury or damage to property that may arise from the failure of the user or other persons to follow the recommendations, warnings, and instructions in this manual.

Testing

6.3

Initial setup should be done in an open area free of obstacles until the user is fully capable of driving safely.

The product should always be tested without any person sitting in the wheelchair until every alteration of the physical installation or adjustment is complete.

Tools Required for Installation & Adjustment

7.1

- 4mm allen wrench
- 10mm wrench
- Torque Wrench

Parts Required

7.2

- Top Latch, 2 each (A)
- Bottom Catch, 2 each (B)
- Back Support Shell, Cushion, and Cover, 1 each (C)
- Adjustment Bracket, 2 each (D)
- Cane Hook, 2 each (E)



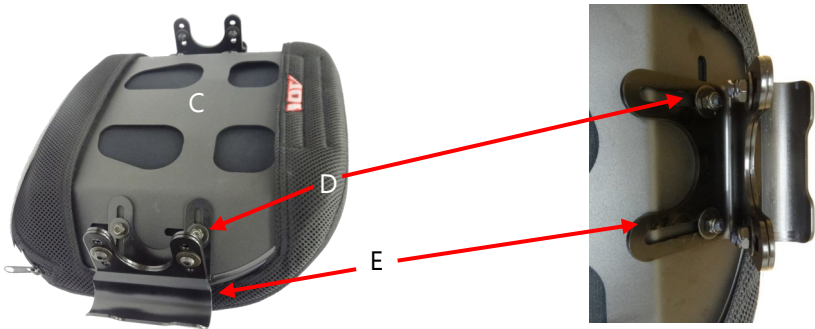
Torque Specification

7.3

Item	Description
Stud Plate	45.1in-lbs
Catch (A,B)	22.5in-lbs
Adjustment Bracket	30in-lbs

NOTICE

Only use the hardware supplied with the ADI back on the ADI back. Do not substitute any other screws, brackets, or clamps. Use of alternative hardware or mounting brackets void all warranties.



Step 1

8.1

Fasten top slide latches and bottom catches to wheelchair back posts:

- 1. Remove existing wheelchair back according to the original manufacturer’s instructions.
- 2. Visually determine the desired height of your new ADI back support. Mark on each back post the needed location to attach the left and right bottom catch.
- 3. Attach the bottom catch and top latch to the back post (left & right sides) and slightly tighten each with a 4mm allen wrench. Make sure the bottom catch and top latch face toward the front of the chair.

NOTICE Slide top latch up, out of the way.

- 4. Slide the cane hook into the bottom catch and slide down the top latch to the desired height.
- 5. Before use, tighten the screws for the top latches and bottom catches with a 4mm allen wrench at the needed height location.

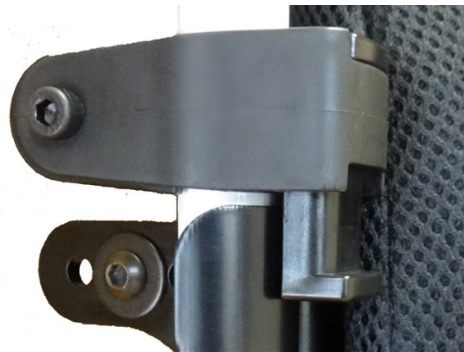
NOTICE

Tighten the back screw of the top latches and bottom catches before tightening the side screws.

NOTICE

The mounting hardware should be installed at equal heights on the left and right sides of the chair.

Top Latch



Bottom Catch



Step 2

8.2

Removing and attaching back support to back posts.

To Remove Hardware:

1. Press left and right top latch release button to unlocked position.
2. Tilt back support forward at a slight angle and lift out of the way from the wheelchair.

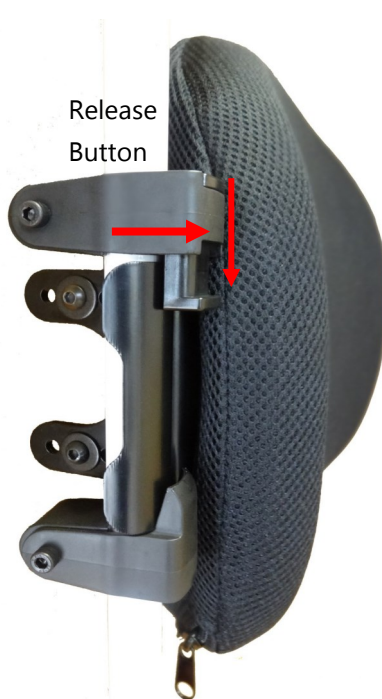
To Install Hardware:

1. Tilt back support at a slight angle and lower cane hook into bottom catches.
2. Press left and right top latches to the DOWN locked position.

Up/ Unlocked Position



Down/Locked Position



Step 3

8.3

Adjustment of height, angle, and depth to users preference.

Height Adjustment

- 1. With a 4mm allen wrench, loosen the top slide latch and the bottom catch.
- 2. Position the back along the back canes at the desired height.
- 3. Move the top slide latch and the bottom catch to meet the bracket attached to the back.
- 4. Tighten the top slide latch and the bottom catch.

NOTICE

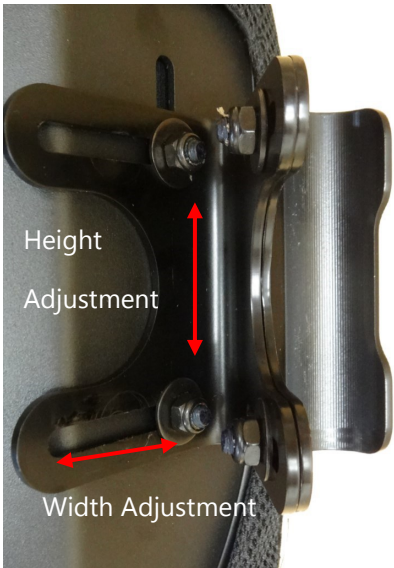
Additional height adjustment may be done by using a 10mm wrench to loosen the hex nuts and slide the back up or down to achieve the desired height.

Width Adjustment

- 1. On each side of the hardware, loosen the top and bottom screws using a 10mm wrench and a 4 mm allen wrench.
- 2. Adjust hardware inward or outward to achieve required chair width.
- 3. After final adjustments are complete, tighten all screws to the proper torque specification.

NOTICE

+/- 1inch width adjustment.

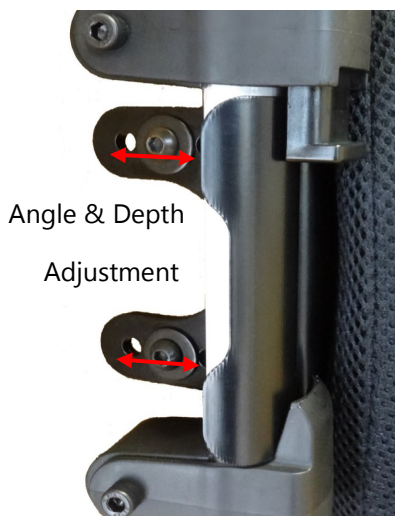


Angle Adjustments

1. On each side of the hardware, loosen the top and bottom bolts using a 4mm allen wrench and a 10mm wrench.
2. Adjust the back support to achieve desired user angle.
3. After final adjustments are complete, tighten all screws to the proper torque specification.

Depth Adjustments

1. On each side of the hardware, loosen the top and bottom bolts using a 4mm allen wrench and a 10mm wrench.
2. Adjust the back support to achieve desired user depth.
3. After final adjustments are complete, tighten all screws to the proper torque specification.



WARNING

Protect all backs from blunt forces that may cause damage and/or breakage.



CAUTION

If you are able to fold the back canes, the back should be in the folded position when transporting the wheelchair, especially before loading for air travel.

Dealer Assistance

9.1

During first time use by the client, it is advised that the dealer or service technician assists and explains the set-up to the customer (the user and/or the attendant). If needed, the dealer can make final adjustments.

CAUTION

ADI backs may not fit every chair. Please consult your clinician or supplier providing your equipment.

CAUTION

Do not attach the ADI backs with the user in the chair.

User Testing

9.2

It is important that the customer is fully aware of the installation, how to use it, and what can be adjusted in order to gain as much mobility as possible. As a dealer, proceed as follows:

- Explain and show the customer how you have executed the installation, and explain the function of the hardware.
- If needed, adjust the hardware to the proper position.
- Explain to the customer possible problems and how to address them.

CAUTION

Do not use ADI backs during vehicle transportation.

Conditions of Use

9.3

The ADI hardware is intended for use as installed by the dealer, in accordance to the installation instructions in this manual.

- The foreseen conditions of use are communicated by the dealer or service technician to the user and/or attendant during the first time use.
- If the usage conditions change significantly, please contact your dealer or a qualified service technician to avoid excessive wear and tear or unintended damage.

Cleaning

10.1

- Use a soft cloth to clean the back shell.
- Hand wash the foam pad cover with mild, soapy water or detergent and let dry.
- Foam pad should NOT get wet.

**WARNING**

Do not hand wash in water temperatures above 160°F (70° C).

**CAUTION**

Institution **MUST** clean and disinfect product between multiple patient uses.

**WARNING**

Do not wash or machine dry.

Disinfection

10.2

- Wipe gently with a cloth dampened with a household disinfectant.
- Allow foam to air dry thoroughly.

**WARNING**

Do not immerse the foam in water.

SAFETY

Always check all mounting hardware, making sure each fastener is properly tightened before using the back support.

**WARNING**

250 lbs. (113.40 kg) user weight limit.

NOTICE

Altering an ADI back in any way and/or improper installation will void the warranty.

This image shows a blank sheet of white paper with horizontal ruling lines. The lines are evenly spaced and run across the width of the page. There are no margins, text, or other markings on the paper.



Stealth Products, LLC. • info@stealthproducts.com • www.stealthproducts.com
+1(800) 965-9229 | +1(512) 715-9995 | 104 John Kelly Drive, Burnet TX 78611