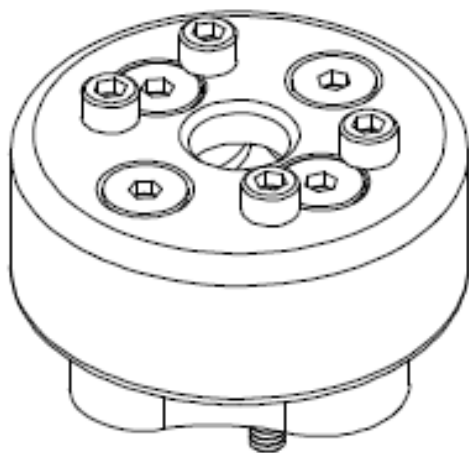




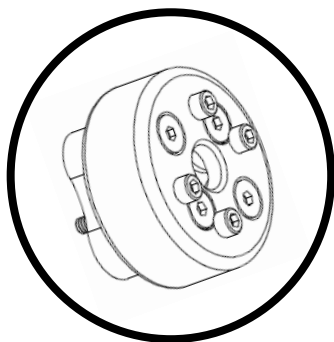
Stealth Products

Installation Manual



Tone Deflector

Installation Instructions for the TD100 and TD101



INSTALLATION INSTRUCTIONS FOR
Stealth Products: TD100 and TD101

Compatible with Stealth Headrests

Stealth Commitment

1.1

Stealth Products strives for 100% customer satisfaction. Your complete satisfaction is important. Please contact us with feedback or suggested changes that will help improve the quality and usability of our hardware. You may reach us at:



Stealth Products, LLC

104 John Kelly Drive, Burnet, TX 78611

Phone: (512) 715-9995

Toll Free: 1(800) 965-9229

Fax: (512) 715-9954

Toll Free: 1(800) 806-1225

info@stealthproducts.com

www.stealthproducts.com



MDSS GmbH

Schiffgraben 41

30175 Hannover, Germany



Installation Date: _____

Dealer: _____

Dealer Stamp:

--




Serial Number:

--

Warning Labels

2.1

Warnings are included for the safety of the user, client, operator and property. Please read and understand what the signal words **SAFETY, NOTICE, CAUTION, WARNING** and **DANGER** mean, how they could affect the user, those around the user, and property.

 DANGER	Identifies an imminent situation which (if not avoided) will result in severe injury, death, and property damage.
 WARNING	Identifies a potential situation which (if not avoided) will result in severe injury, death, and property damage.
 CAUTION	Identifies a potential situation which (if not avoided) will result in minor to moderate injury, and property damage.
<i>NOTICE</i>	Identifies important information not related to injury, but possible property damage.
SAFETY	Indicates steps or instructions for safe practices, reminders of safe procedures, or important safety equipment that may be necessary.

Limited Liability

2.2

Stealth Products, LLC accepts no liability for personal injury or damage to property that may arise from the failure of the user or other persons to follow the recommendations, warnings, and instructions in this manual.

Stealth Products does not hold responsibility of final integration of final assembly of product to end user. Stealth Products is not liable for user death or injury.

Testing

2.3

Initial setup and driving should be done in an open area free of obstacles until the user is fully capable of driving safely.

The Tone Deflector should always be installed and tested on the headrest without any person sitting in the wheelchair until every alteration of the physical installation or adjustment is complete.

1.0 Customer Satisfaction.....i

1.1 Stealth Commitment.....i

2.0 Warnings.....ii

2.1 Warning Labels.....ii

2.2 Limited Liabilityii

2.3 Testingii

3.0 Table of Contentsiii

4.0 Parts and Accessories.....1

4.1 Mounting Hardware Parts for TD1001

4.2 Mounting Hardware Parts for TD1012

4.3 Mounting Hardware Tools3

4.4 Torque Specifications.....3

5.0 Installation Instructions.....4

5.1 Installing the TD100.....4

Installing Headrest Hardware.....7

5.2 Installing the TD101.....9

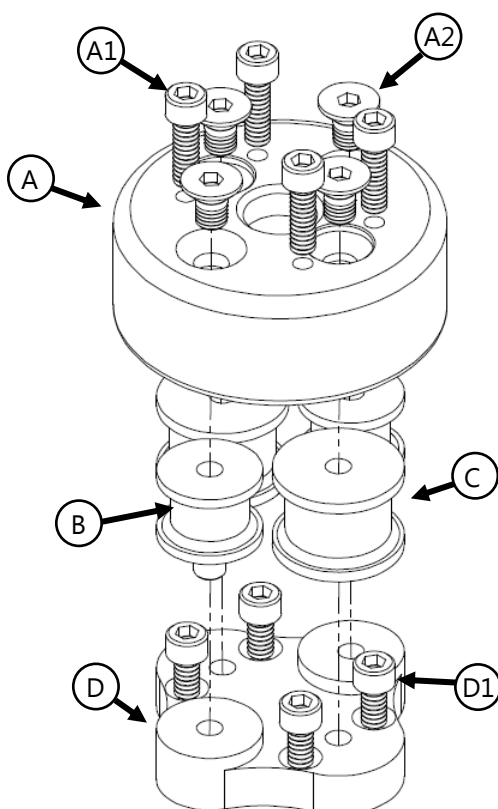
Installing Headrest Hardware.....12

6.0 Warranty14

6.1 In Case of Product Failure14

Mounting Hardware Parts for TD100

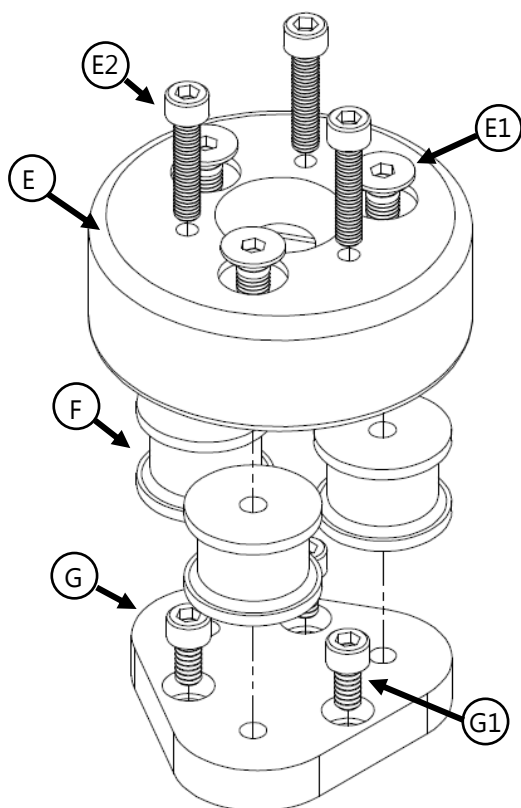
4.1



		Description	
A	Tone Deflector Interface Ring	A1	10-24 x 5/8" SHS (4)
		A2	M6-1 x 10mm FHS (4)
B	Cylindrical Rubber Mount 20		
C	Cylindrical Rubber Mount 25		
D	Tone Deflector Interface Plate	D1	10-24 x 3/8" SHS (4)

Mounting Hardware Parts for TD101

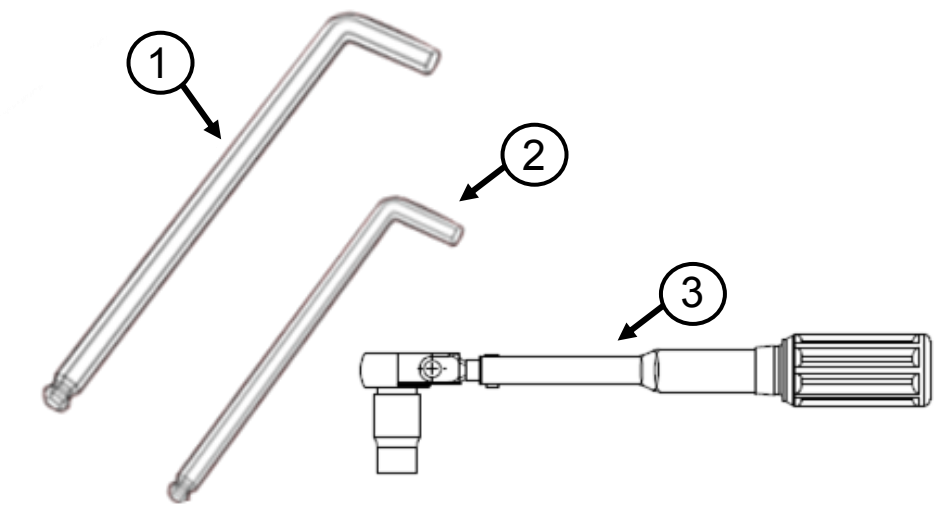
4.2



		Description	
E	Tone Deflector Interface Ring	E1	10-32 x 7/8" SHS (3)
		E2	M6-1 x 10mm FHS (3)
F	Cylindrical Rubber Mount		
G	Tone Deflector Interface Plate	G1	10-24 x 3/8" SHS (3)

Mounting Hardware Tools

4.3



Tools			Description	Part Number
1	T-Handle ¹	5/32 T-Handle	10-24 x 3/8 SHS	TD100/101
			10-24 x 5/8 SHS	TD100
2		4mm T-Handle	M6-1 x 10mm	TD100/101
3	Torque Wrench ²			

Torque Specifications

4.4

	Torque Specification
A1, E1	90 in-lbs (10.2 Nm)
A2, E2	106 in-lbs (12 Nm)
D1, G1	90 in-lbs (10.2 Nm)

1. T-Handles not included.

2. Torque Wrench not included.

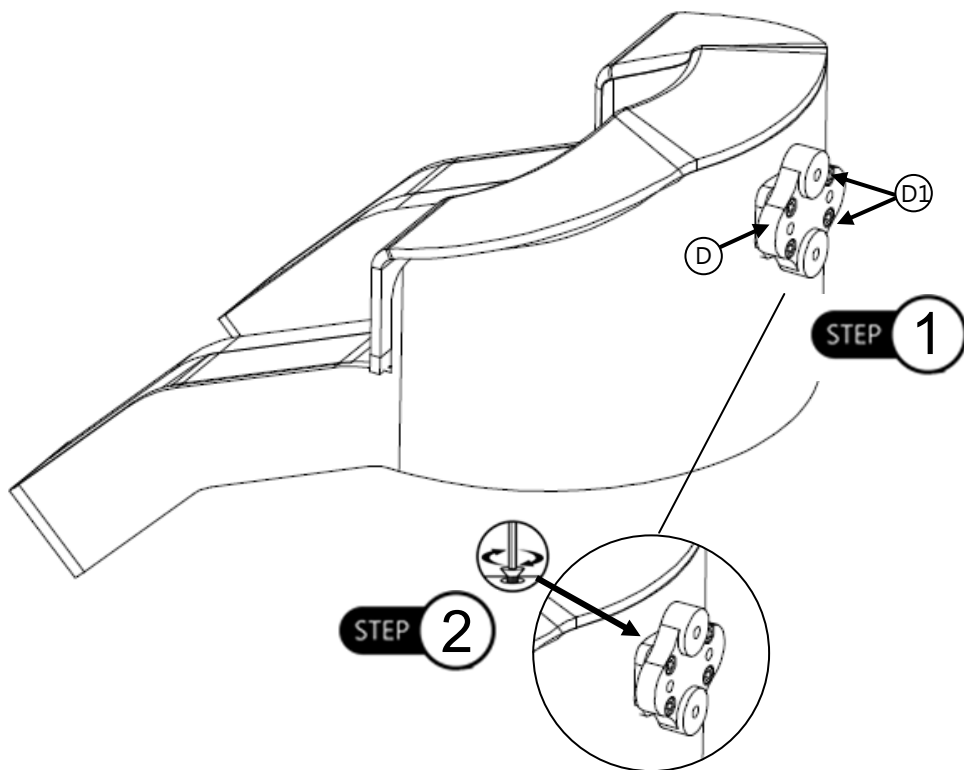
Installing the TD100

5.1

To install the TD100 onto the headrest, follow the installation instructions below:

Step 1: Align the Tone Deflector Interface Plate (D) with the back of the headrest.

Step 2: Insert the four (4) 10-24 x 3/8" Socket Head Screws (D1) onto the interface plate and tighten with a 5/32 T-Handle. Refer to *Section 4.4* for proper torque specifications.

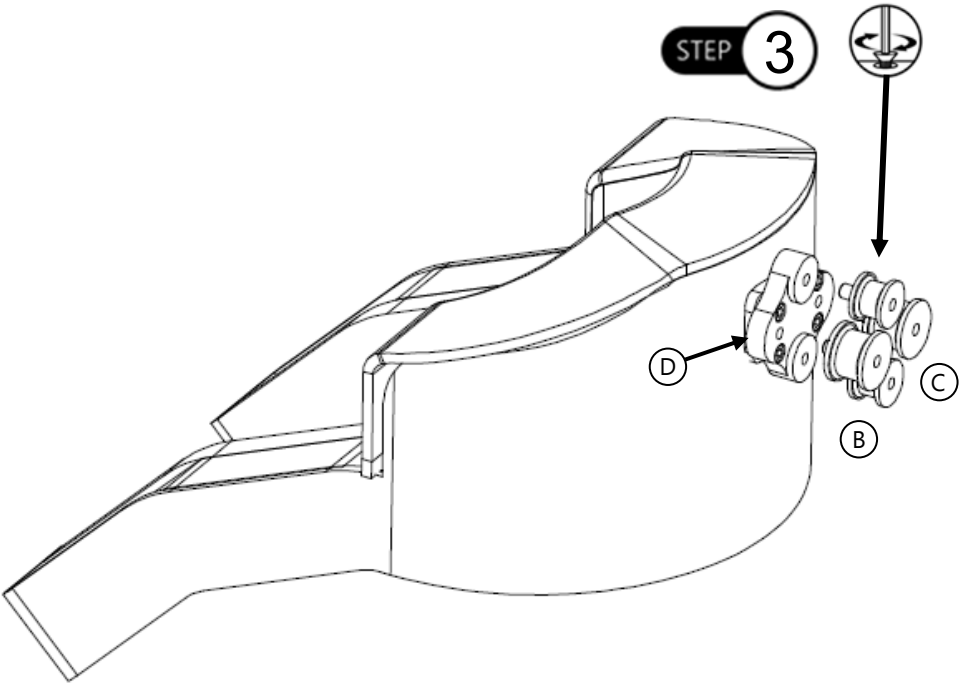


⚠ WARNING

Ensure the Tone Deflector Interface Plate is mounted level on the headrest. Unleveled mounting can cause the Tone Deflector to not work properly.

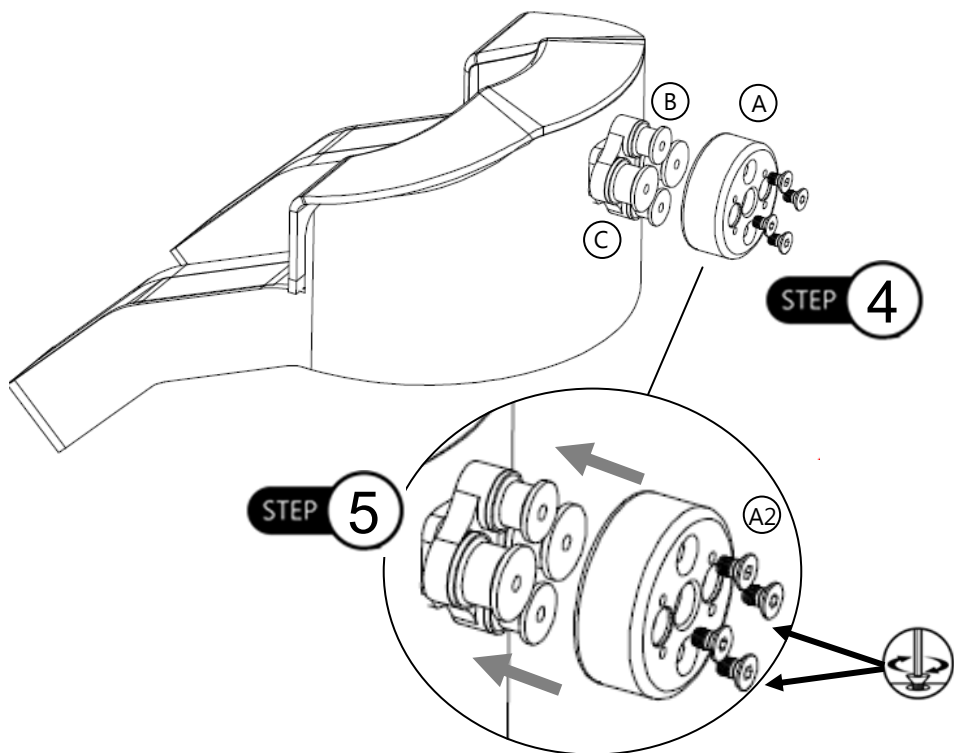
* The Tone Deflector is shown on an i2i headrest.

Step 3: Align the Cylindrical Rubber Mounts (B,C) with the interface plate (D) and tighten by using your hand.



Step 4: Place the Tone Deflector Interface Ring (A) over the Cylindrical Rubber Mounts (B,C) and align the holes.

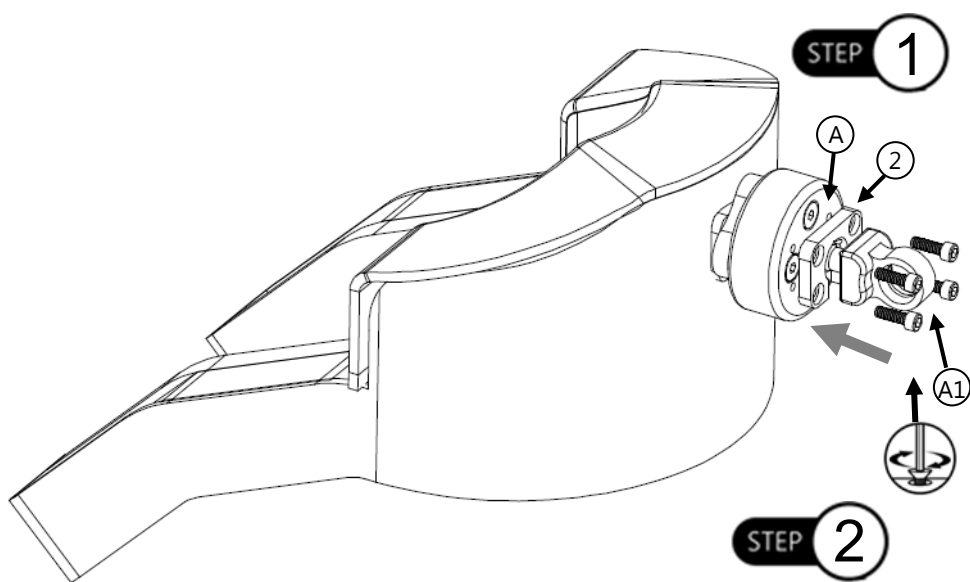
Step 5: Insert the four (4) M6-1 x 10mm Flat Head Screws (A2) into the Tone Deflector Interface Ring (A). With a 4mm T-Handle, tighten and secure screws. Refer to *Section 4.4* for proper torque specifications.



To mount headrest hardware onto the Tone Deflector, follow the instructions below:

Step 1: Place the split ring (2) on top of the Tone Deflector Interface Ring (A) . Insert ball mount onto split ring.

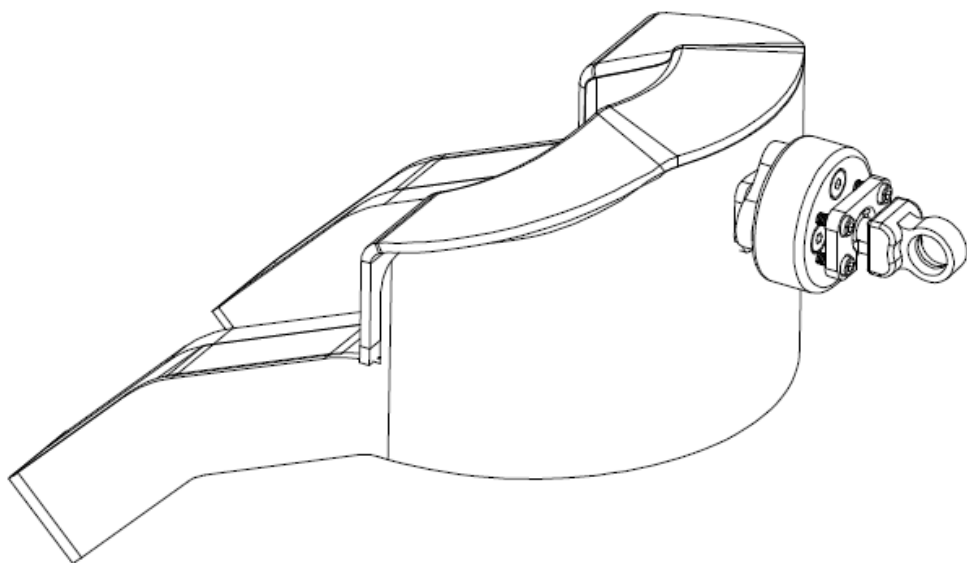
Step 2: Insert the four (4) 10-24 x 5/8" Socket Head Screws (A1) into the split ring. With a 5/32 T-Handle, tighten the screws onto the Tone Deflector Interface Ring. Refer to *Section 4.4* for proper torque specifications.



NOTICE

Mounting instructions may vary depending on the hardware used for the headrest. Contact your service provider for more information.

Step 3: After screws are tightened and the hardware has been properly installed, the Tone Deflector and headrest are now ready for installation onto the headrest hardware and chair.



⚠ CAUTION

Only use the standard 10-24 x 5/8" Socket Head Screws for mounting the TD100 to headrest.

⚠ WARNING

Do not overtighten screws. If screws are overtightened the mounting bracket could bend.

⚠ CAUTION

Ensure that all screws are tightened evenly on the hardware. Threads can strip out and cause damage to the hardware if not tightened properly.

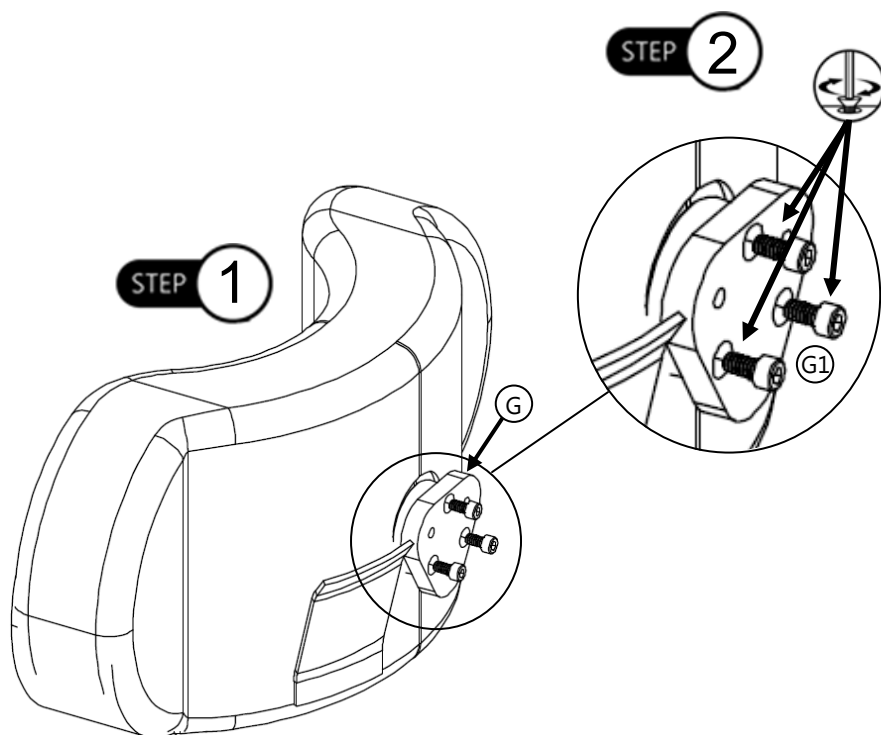
Installing the TD101

5.2

To install the TD101 onto the headrest, follow the installation instructions below:

Step 1: Align the Tone Deflector Interface Plate (G) with the back of the headrest.

Step 2: Insert the three (3) 10-24 x 3/8" SHS (G1) into the plate and tighten with 5/32 T-Handle. Refer to *Section 4.4* for proper torque specifications.

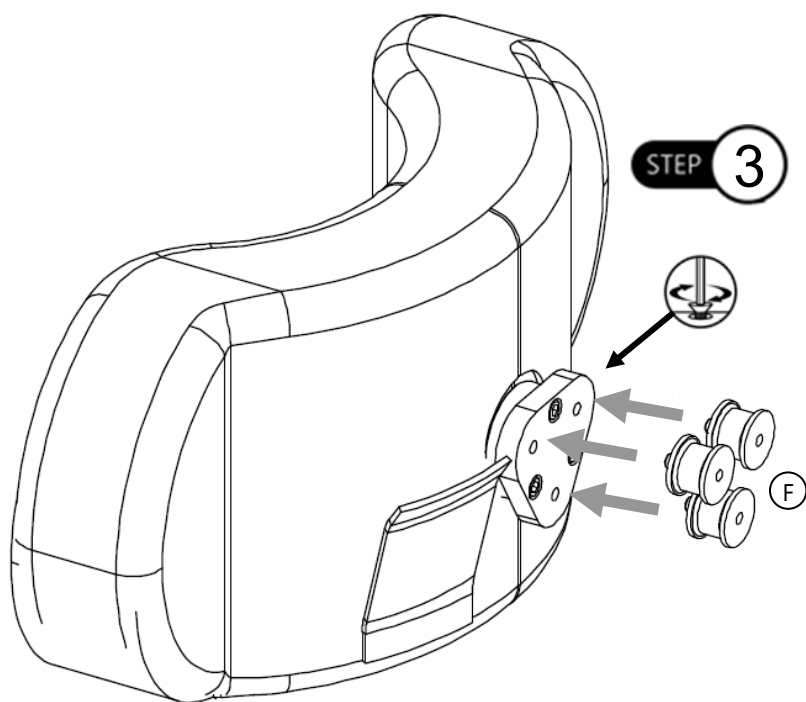


⚠ WARNING

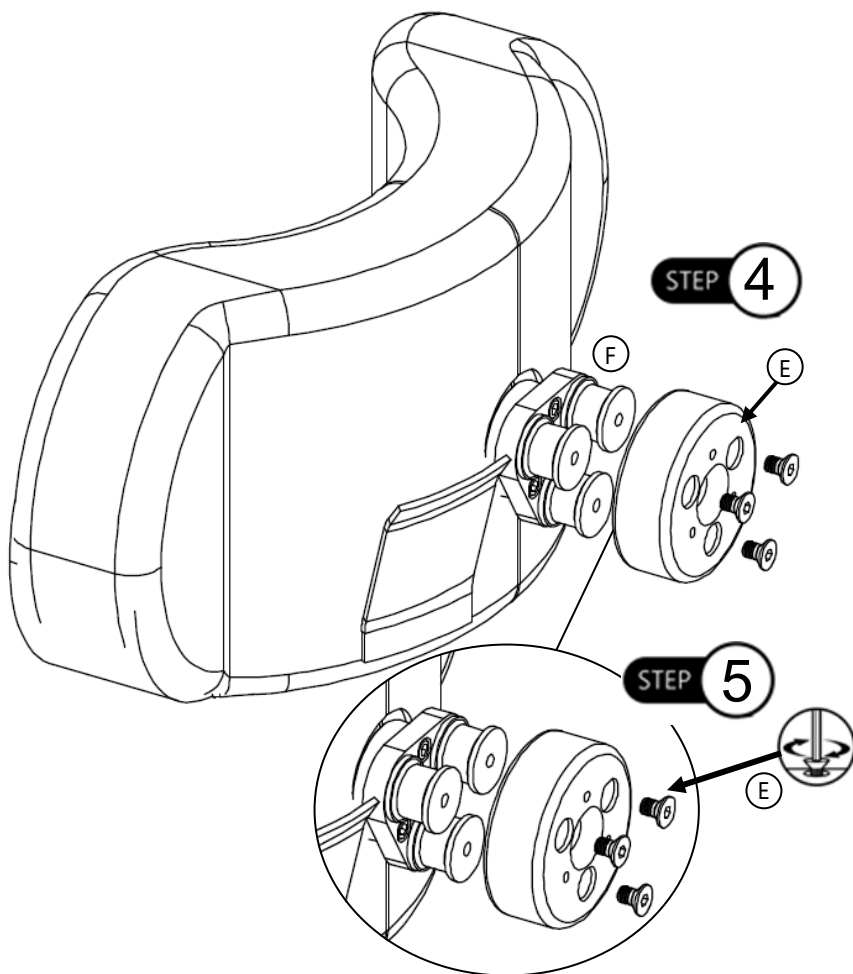
Ensure the Tone Deflector Interface Plate is mounted level on the headrest. Unleveled mounting can cause the Tone Deflector to not work properly.

* The Tone Deflector is shown on a Comfort Plus headrest.

Step 3: Take the Cylindrical Rubber Mounts (F), and align with the thru holes on the interface plate (G). Using your fingers, tighten and secure the rubber mounts.



- Step 4:** Place the Tone Deflector Interface Ring (E) over the Cylindrical Rubber Mounts (F) and align the holes.
- Step 5:** Insert the three (3) M6-1 x 10mm Flat Head Screws (E2) into the Tone Deflector Interface Ring (E). With a 4mm T-Handle, tighten and secure screws. Refer to *Section 4.4* for proper torque specifications.

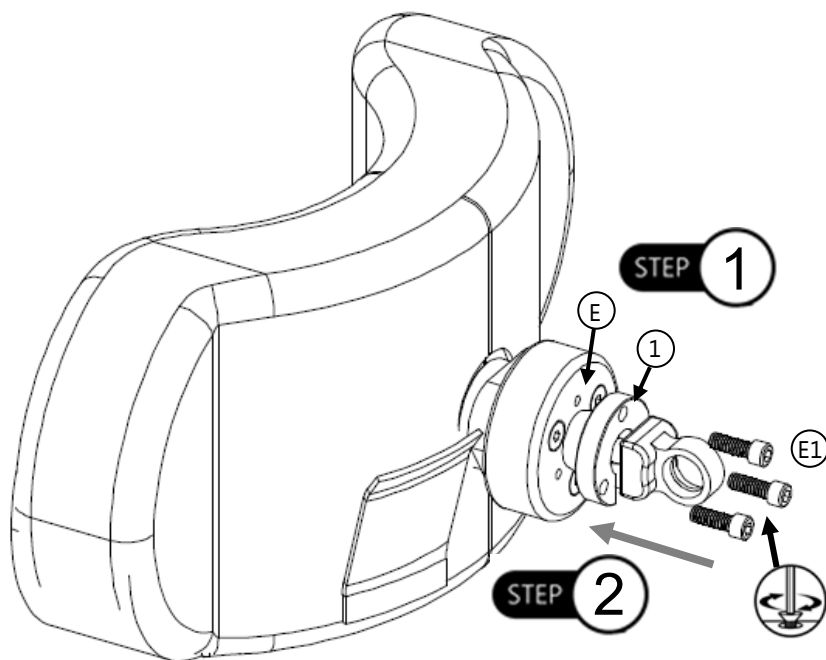


⚠ CAUTION

Ensure that all screws are tightened evenly on the hardware. Threads can strip out and cause damage to the hardware if not tightened properly.

To mount the headrest hardware onto the tone deflector, follow the instructions below:

- Step 1:** Place the split ring (1) on top of the Tone Deflector Interface Ring (E) . Insert ball mount onto split ring.
- Step 2:** Insert the three (3) 10-32 x 7/8" Socket Head Screws (E1) into the split ring. With a 5/32 T-Handle, tighten the screws onto the Tone Deflector Interface Ring. Refer to *Section 4.4* for proper torque specifications.

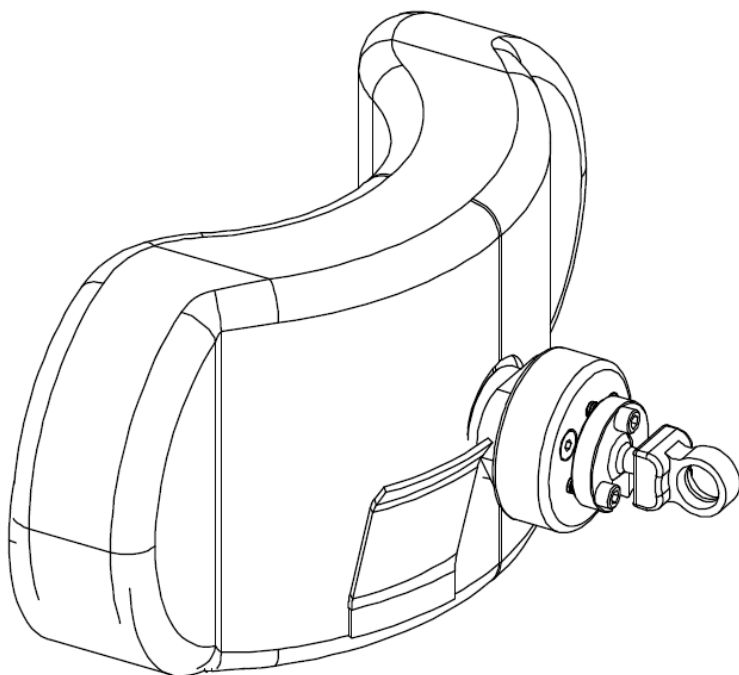


NOTICE

Mounting instructions may vary depending on the hardware used for the headrest. Contact your service provider for more information.

* Comfort Plus headrest shown with split ring.

Step 3: After screws are tightened and the hardware has been properly installed, the Tone Deflector and headrest are now ready for installation onto the headrest hardware and chair.



⚠ CAUTION

Only use the standard 10-32 x 7/8" Socket Head Screws for mounting the TD101 to the headrest.

⚠ WARNING

Do not overtighten screws. If screws are overtightened the mounting bracket could bend.

⚠ CAUTION

Ensure that all screws are tightened evenly on the hardware. Threads can strip out and cause damage to the hardware if not tightened properly.

Our products are designed, manufactured, and produced to the highest of standards. If any defect in material or workmanship is found, Stealth Products will repair or replace the product at our discretion. Any implied warranty, including the implied warranties of merchantability and fitness for a particular purpose, shall not extend beyond the duration of this warranty. Stealth Products, LLC does not warrant damage due to, but not limited to:

- Misuse, abuse, or misapplication of products.
- Modification of product without written approval from Stealth Products, LLC.
- Any alteration or lack of serial number, where applicable, will automatically void this warranty.
- Stealth Products, LLC is liable for replacement parts only.
- Stealth Products, LLC is not liable for any incurred labor costs.

No person is authorized to alter, extend, or waive the warranties of Stealth Products, LLC.

Stealth Products warrants against failure due to defective materials or workmanship:

Covers: 2 years

Hardware: 5 years

Electronics: 3 years

In Case of Product Failure

6.1

In the event of product failure covered by our warranty, please follow the procedures outlined below:

1. Call Stealth at +1 (512) 715-9995 or toll free +1-800-965-9229.
2. Request the Returns Department or obtain an RA from the Returns Department and follow department or documentation instructions.

This image shows a single sheet of white paper with horizontal ruling lines. The lines are evenly spaced and run across the width of the page. There are no margins, text, or other markings on the paper.



Stealth Products, LLC. • info@stealthproducts.com • www.stealthproducts.com
+1(800) 965-9229 | +1(512) 715-9995 | 104 John Kelly Drive, Burnet TX 78611