



## Tone Deflector

---

Stealth's User Manual and Maintenance Guide for  
Head Solutions Hardware

Stealth Products strives for 100% customer satisfaction. Your complete satisfaction is important. Please contact us with feedback or suggested changes that will help improve the quality and usability of products.

You may reach us at:



Stealth Products, LLC

104 John Kelly Drive, Burnet, TX 78611

Phone: (512) 715-9995

Toll Free: 1(800) 965-9229

Fax: (512) 715-9954

Toll Free: 1(800) 806-1225

info@stealthproducts.com

www.stealthproducts.com



MDSS GmbH

Schiffgraben 41

30175 Hannover, Germany



## General

Read and understand all instructions prior to the use of the product. Failure to adhere to instructions and warnings in this document may result in property damage, injury, or death. Product misuse due to failure of the following instructions will void the warranty.

Immediately discontinue use if any function is compromised, parts are missing, loose, or shows signs of excessive wear. Consult with your supplier for repair, adjustment, or replacement.

## Important Information!

All persons responsible for fitting, adjustment, and daily use of the devices discussed in these instructions must be familiar with and understand all safety aspects of the devices mentioned. In order for our products to be used successfully, you must:

- Read and understand all instructions and warnings.
- Maintain our products according to our instruction on care and maintenance.
- Devices should be installed and adjusted by a trained technician.

## Supplier Reference

Supplier: \_\_\_\_\_

Telephone: \_\_\_\_\_

Address: \_\_\_\_\_

\_\_\_\_\_

Purchase Date: \_\_\_\_\_

Model: \_\_\_\_\_

Before you install or begin using this product, it is important that you read and understand the content of these installation and operating instructions. The installation instructions will guide you through the possibilities with the Tone Deflector.

Instructions are written with the expressed intent of use with standard configurations. They also contain important safety and maintenance information. For further assistance, or more advanced applications, please contact your supplier or Stealth Products at (512) 715-9995 or toll free at 1-800-965-9229.

Always keep the operating instructions in a safe place so they may be referenced as necessary.

All information, pictures, illustrations, and specifications are based on the product information that was available at the time of printing. Pictures and illustrations shown in these instructions are representative examples and are not intended to be exact depictions of the various parts of the product.

## Ordering Documentation

You can download additional copies of this User Manual on the Stealth website:  
[www.stealthproducts.com/gui/docs/?type=usr&](http://www.stealthproducts.com/gui/docs/?type=usr&)

Or search:

Tone Deflector User Manual in the search bar at the top of the page.

Our products are designed, manufactured, and produced to the highest of standards. If any defect in material or workmanship is found, Stealth Products will repair or replace the product at our discretion. Any implied warranty, including the implied warranties of merchantability and fitness for a particular purpose, shall not extend beyond the duration of this warranty. Stealth Products, LLC does not warrant damage due to, but not limited to:

- Misuse, abuse, or misapplication of products.
- Modification or product without written approval from Stealth Products, LLC.
- Any alteration or lack of serial number, where applicable, will automatically void this warranty.
- Stealth Products, LLC is liable for replacement parts only.
- Stealth Products, LLC is not liable for any incurred labor costs.

No person is authorized to alter, extend, or waive the warranties of Stealth Products, LLC.

Stealth Products warrants against failure due to defective materials or workmanship:

Covers: 180 days

Hardware: 5 years

Electronics: 3 years

## In Case of Product Failure

In the event of product failure covered by our warranty, please follow the procedures outlined below:

1. Call Stealth at +1 (512) 715-9995 or toll free +1-800-965-9229.
2. Request the Returns Department or obtain an RA from the Returns Department and follow department or documentation instructions.

<b>1.0 Customer Satisfaction</b> .....	<b>i</b>
<b>2.0 Important Information</b> .....	<b>ii</b>
<b>3.0 Introduction</b> .....	<b>iii</b>
<b>4.0 Warranty</b> .....	<b>iv</b>
<b>5.0 Table of Contents</b> .....	<b>v</b>
<b>6.0 Warning Labels</b> .....	<b>vi</b>
6.1 Warning Labels .....	vi
6.2 Limited Liability.....	vi
6.3 Testing.....	vi
<b>7.0 Design and Function</b> .....	<b>1</b>
7.1 Intended Use .....	1
7.2 Features .....	1
7.3 Mounting .....	1
<b>8.0 Parts and Accessories</b> .....	<b>1</b>
8.1 Parts Included.....	1
<b>9.0 Mounting</b> .....	<b>3</b>
9.1 Compatibility .....	3
<b>10.0 Installation Instructions</b> .....	<b>4</b>
10.1 Tools .....	4
10.2 Installation Plan .....	4
10.3 Tone Deflector Installation .....	4
10.4 Installation .....	5
<b>11.0 First Time Use</b> .....	<b>6</b>
11.1 Dealer Assistance.....	6
11.2 User Testing .....	6
13.3 Conditions of Use .....	6
<b>12.0 Maintenance</b> .....	<b>7</b>
12.1 Cleaning and Maintenance.....	7

## Warning Labels

## 6.1

Warnings are included for the safety of the user, client, operator and property. Please read and understand what the signal words **SAFETY, NOTICE, CAUTION, WARNING** and **DANGER** mean, how they could affect the user, those around the user, and property.

### **DANGER**

Identifies an **imminent** situation which (if not avoided) will result in **severe injury, death, and property damage**.

### **WARNING**

Identifies a **potential** situation which (if not avoided) will result in **severe injury, death, and property damage**.

### **CAUTION**

Identifies a **potential** situation which (if not avoided) will result in **minor to moderate injury, and property damage**.

### **NOTICE**

Identifies important information not related to injury, but possible **property damage**.

### **SAFETY**

Indicates steps or instructions for safe practices, reminders of safe procedures, or important safety equipment that may be necessary.

## Limited Liability

## 6.2

Stealth Products, LLC accepts no liability for personal injury or damage to property that may arise from the failure of the user or other persons to follow the recommendations, warnings, and instructions in this manual.

Stealth Products does not hold responsibility of final integration of final assembly of product to end user. Stealth Products is not liable for user death or injury.

## Testing

## 6.3

Initial setup and driving should be done in an open area free of obstacles until the user is fully capable of driving safely.

The Tone Deflector should always be tested without any person sitting in the wheelchair until every alteration of the physical installation or adjustment is complete.

## Intended Use

### 7.1

The Tone Deflector is intended to serve two main functions when installed:

- Absorb
- Avert



## Features

### 7.2

- Absorbs high tone rearward and angular forces.
- Moves with the client to absorb high tone actions.
- Helps with quick impact loading.
- Averts slanted angle loading up to 10° in any direction.
- Compatible with Stealth headrests, including the Ultra, i2i, Combo, All Positioning and Comfort Plus headrests.

## Mounting

### 7.3

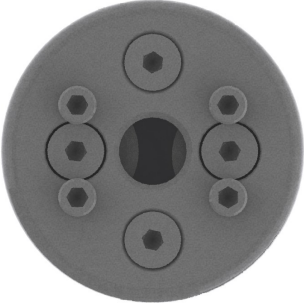
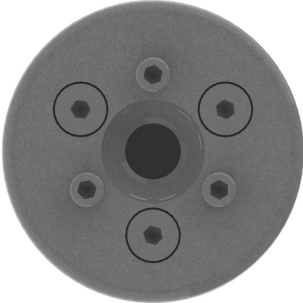
The Tone Deflector is designed to be mounted onto Stealth headrests and absorb high tone forces.

It is not recommended to be used with Stealth's i-Drive interface of the HMO500 hardware.



**Parts Included****8.1**

Two options of tone deflectors are available to order:

Part Number	Description	
<b>TD100</b>	Headrest Tone Deflector for 17mm Ball	
<b>TD101</b>	Headrest Tone Deflector for 1in. Ball	

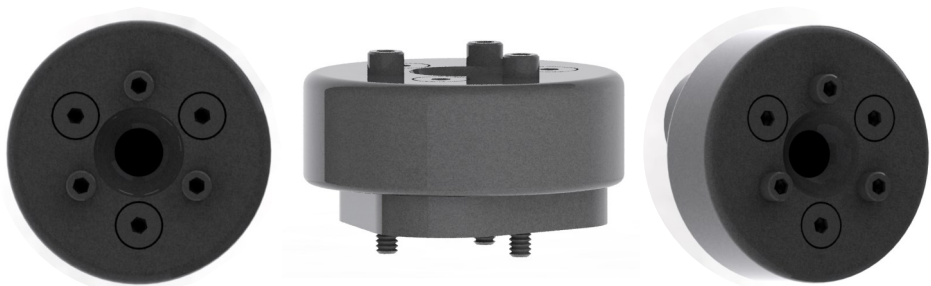
## Compatibility

### 9.1

The TD100 is a 4 hole bolt pattern for 17mm ball hardware.



The TD101 is a 3 hole bolt pattern for 1 inch ball hardware.



** WARNING**

Only a qualified service technician may install the Tone Deflector.

**Tools****10.1**

- 5/32 T-Handle
- 4mm T-Handle

** CAUTION**

Use the proper tools to install the Tone Deflector. The use of improper tools may cause damage to the hardware and could result in injury.

**Installation Plan****10.2**

Set up an installation plan before mounting the tone deflector to the headrest. Ensure that the Tone Deflector is properly installed onto the headrest and that all screws have been evenly tightened.

** CAUTION**

Ensure that all screws are tightened evenly on the hardware. Threads can strip out and cause damage to the hardware if not properly tightened.

**Tone Deflector Installation****10.3**

To install the tone deflector, follow the instructions in the Tone Deflector Installation Manual. Carefully follow the instructions to prevent injury. Call Stealth Products for questions.

## Installation

## 10.4

The installation instructions for the TD100 and TD101 include the same steps. The TD100 will have 4 screw holes while the TD101 will have 3.

- Determine the headrest the tone deflector will be mounted to and if a 17mm or 1in. ball is needed. Based on the ball hardware size, this will determine which tone deflector will be used.
- Align the Tone Deflector Interface Plate with the back of the headrest. Use the proper screws to tighten the plate to the headrest.

### CAUTION

Tighten screws firmly but not excessively. Excessive force may damage the unit.

- Install the Cylindrical Rubber Mounts to Interface Plate. Screw these in by hand.
- Align and install the Interface Ring over the rubber mounts and secure with proper screws.
- Insert the proper screws into the interface ring to secure.
- The headrest hardware is now ready to be installed. Refer to the installation manual for specific instructions on mounting the hardware.

### CAUTION

Only use the screws provided in the package for installation.

### WARNING

Discontinue use if any of the products function becomes compromised, loose, shows signs of excessive wear, missing parts, or does not function as intended.

## Dealer Assistance

### 11.1

During first time use by the client, it is advised that the dealer or service technician assists and explains the configuration to the customer (the user and/or the attendant). If needed, the dealer can make final adjustment.

#### **WARNING**

The Tone Deflector should only be prescribed and fitted by a qualified health care professional.

## User Testing

### 11.2

It is important that the customer is fully aware of the installation and how the tone deflector can be adjusted in order to gain the best positioning possible.

As a dealer, proceed as follows:

- Explain and show the customer how you have executed the installation, and explain the function.

Have the user test the position of the Tone Deflector:

- Has the hardware been properly installed onto the headrest?
- Does the Tone Deflector properly absorb tone properly from the client?
- Can the client safely operate the chair with the hardware installed?

If needed, adjust the Tone Deflector to the proper position.

Explain to the customer any possible issues and how to address them.

## Conditions of Use

### 11.3

The Tone Deflector is intended for use as installed by the dealer, in accordance to the installation instructions in this manual:

- The foreseen conditions of use are communicated by the dealer or service technician to the user and/or attendant during the first time use.
- If the conditions of use change significantly, please contact your dealer or a qualified service technician to avoid excessive wear and tear or unintended damage.

## Care and Maintenance

### 12.1

- Periodically check the hardware for loose screws or worn parts.
- Check for any breakdown of the material. This could be potentially dangerous for the client.

**SAFETY**

Replace or repair parts as needed.

- Gently remove dust and dirt with a damp cloth.

 **DANGER**

Failure to comply with these warnings could result in serious bodily harm.





Stealth Products, LLC. • [info@stealthproducts.com](mailto:info@stealthproducts.com) • [www.stealthproducts.com](http://www.stealthproducts.com)  
+1(800) 965-9229 | +1(512) 715-9995 | 104 John Kelly Drive, Burnet TX 78611