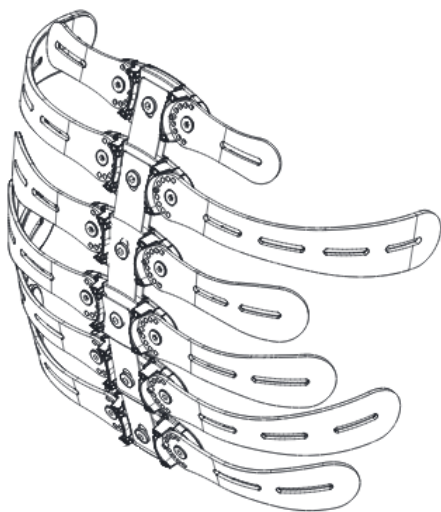




**Stealth Products**

Tarta® Backs

## **Installation Manual**



Tarta®

---

### Tarta® Series Backrest System



#### **INSTALLATION INSTRUCTIONS FOR**

**Stealth Products Tarta Back for 4,5 and 6 vertebra heights**

**Stealth Commitment**

**1.1**

Stealth Products strives for 100% customer satisfaction. Your complete satisfaction is important. Please contact us with feedback or suggested changes that will help improve the quality and usability of our products. You may reach us at:

Stealth Products, LLC  
104 John Kelly Drive, Burnet, TX 78611  
Phone: (512) 715-9995      Toll Free: 1(800) 965-9229  
Fax: (512) 715-9954      Toll Free: 1(800) 806-1225  
info@stealthproducts.com      www.stealthproducts.com

Installation Date: \_\_\_\_\_

Dealer: \_\_\_\_\_

Dealer Stamp:

Serial Number:

# Warning Labels

## 2.1

Warnings are included for the safety of the user, client, operator and property. Please read and understand what the signal words **SAFETY, NOTICE, CAUTION, WARNING** and **DANGER** mean, how they could affect the user, those around the user, and property.

|   |  |
|---|--|
|  <b>DANGER</b>  | Identifies an <b>imminent</b> situation which (if not avoided) will result in <b>severe injury, death, and property damage.</b>        |
|  <b>WARNING</b> | Identifies a <b>potential</b> situation which (if not avoided) will result in <b>severe injury, death, and property damage.</b>        |
|  <b>CAUTION</b> | Identifies a <b>potential</b> situation which (if not avoided) will result in <b>minor to moderate injury, and property damage.</b>    |
| <b>NOTICE</b>   | Identifies important information not related to injury, but possible <b>property damage.</b>   |
| <b>SAFETY</b>   | Indicates steps or instructions for safe practices, reminders of safe procedures, or important safety equipment that may be necessary. |

# Limited Liability

## 2.2

Stealth Products, LLC accepts no liability for personal injury or damage to property that may arise from the failure of the user or other persons to follow the recommendations, warnings, and instructions in this manual.

Stealth Products does not hold responsibility of final integration of final assembly of product to end user. Stealth Products is not liable for user death or injury.

# Testing

## 2.3

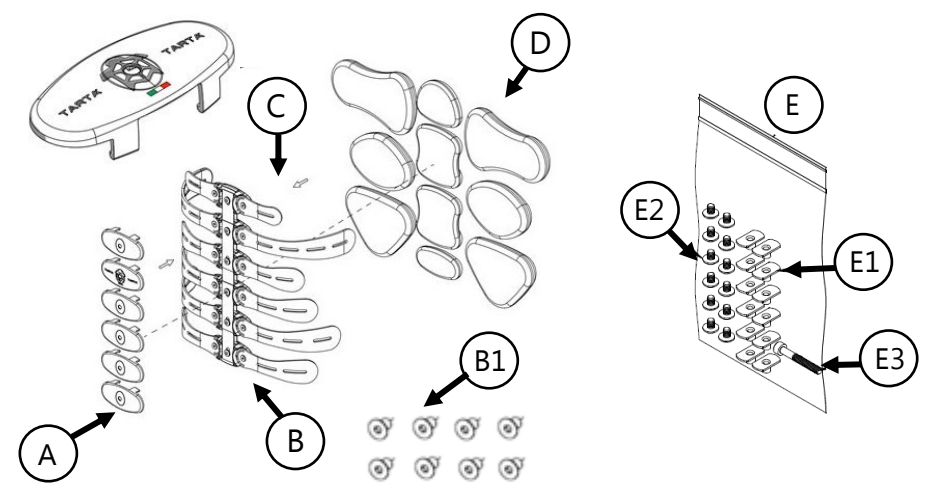
Initial setup and driving should be done in an open area free of obstacles until the user is fully capable of driving safely.

The Tarta<sup>®</sup> back should always be tested by the caregiver and end user. Adjust the back specifically to the users needs.

|   |            |
|---|------------|
| <b>1.0 Customer Satisfaction .....</b>          | <b>i</b>   |
| 1.1 Stealth Commitment.....                     | i          |
| <b>2.0 Warnings .....</b>                       | <b>ii</b>  |
| 2.1 Warning Labels .....                        | ii         |
| 2.2 Limited Liability .....                     | ii         |
| 2.3 Testing .....                               | ii         |
| <b>3.0 Table of Contents.....</b>               | <b>iii</b> |
| <b>4.0 Parts and Accessories .....</b>          | <b>1</b>   |
| 4.1 Mounting Hardware Parts .....               | 1          |
| 4.2 Mounting Hardware Tools .....               | 1          |
| <b>5.0 Installation Instructions.....</b>       | <b>2</b>   |
| 5.1 Installing Central Plates & Vertebrae ..... | 2          |
| 5.2 Installing Ribs .....                       | 4          |
| 5.3 Adjustment of Vertebrae/Ribs .....          | 6          |
| 5.4 Uninstalling Vertebrae/Ribs .....           | 8          |
| 5.5 Pad Installation .....                      | 11         |
| <b>6.0 Mounting Hardware Options .....</b>      | <b>13</b>  |
| 6.1 Mounting Hardware .....                     | 13         |
| Tension Strap .....                             | 13         |
| Clamp Strap No-Bar.....                         | 14         |
| Fixed Clamp.....                                | 18         |
| Height Adjustable Mounting Clamp.....           | 19         |
| Removable Mount .....                           | 21         |
| 6.2 Width Adjustment of Rigidizer Bar .....     | 25         |
| <b>7.0 Warranty .....</b>                       | <b>26</b>  |
| 7.1 In Case of Product Failure .....            | 26         |

Mounting Hardware Parts

4.1

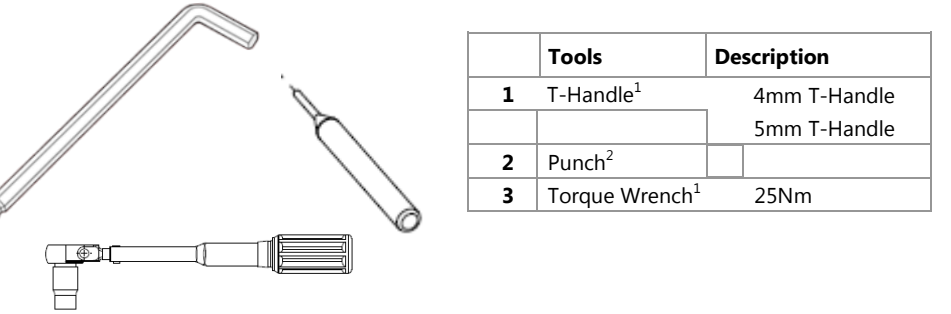


Mounting Hardware Tools

4.2

|   |              | Description |                      |
|---|--------------|-------------|----------------------|
| A | Carter       |             |                      |
| B | Ribs         | B1          | M6 x 10mm FHS        |
| C | Vertebras    |             |                      |
| D | Support Pads |             |                      |
| E | TRTHWPAD-12  | E1          | M4 T-Nut             |
|   |              | E2          | M4 Button Head Screw |
|   |              | E3          | M4 Socket Head Screw |

| m6's provided | Vertebra's |
|---------------|------------|
| 8             | 4          |
| 10            | 5          |
| 12            | 6          |



1.

T-Handle and Torque Wrench not included.
2.

Punch will be provided with each Tarta Back-in-a-Box.
- \*

The artwork shown on the product is for reference only.

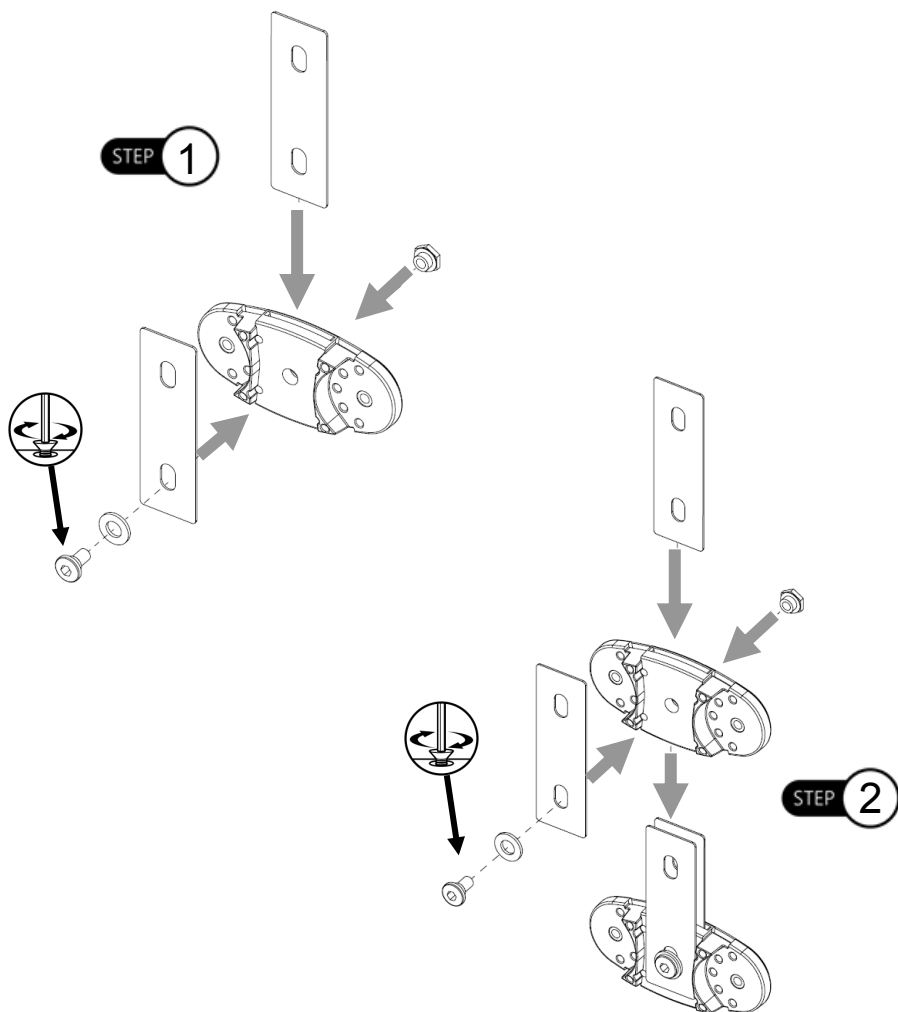
## Installing Central Plates & Vertebrae

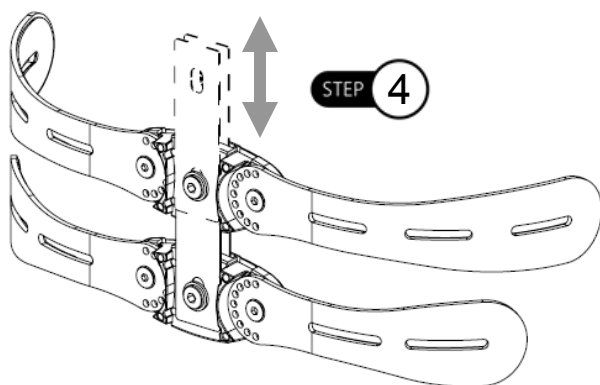
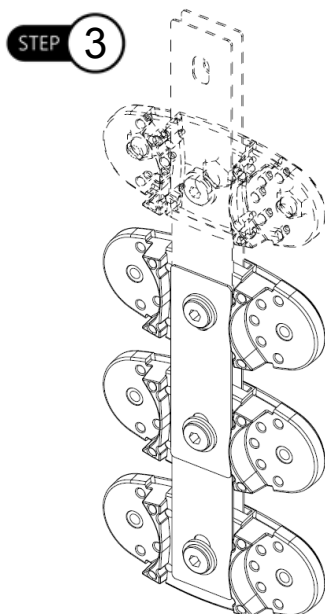
### 5.1

Use a 5mm T-Handle to tighten the screws onto the central plates.

#### NOTICE

Reference the user manual for Back-in-a-Box part numbers and components.





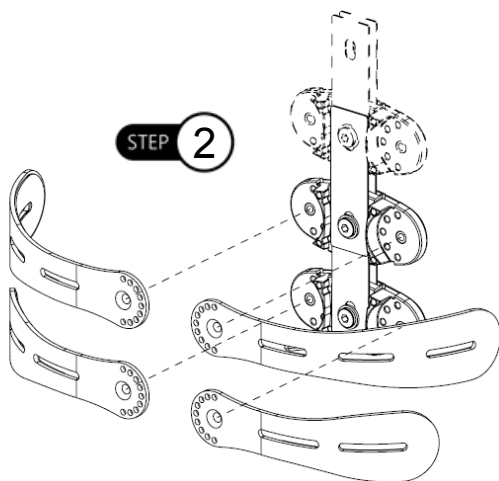
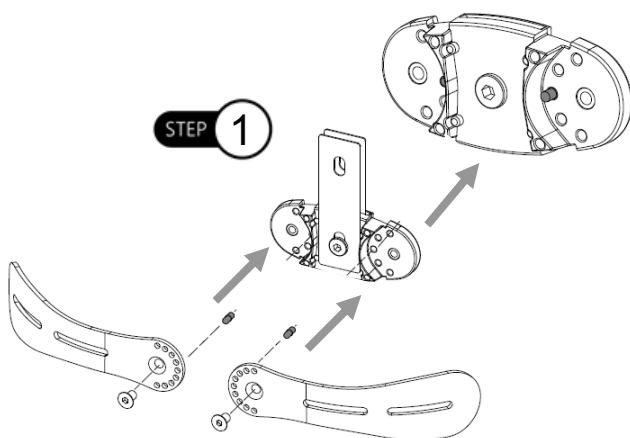
## Installing Ribs

## 5.2

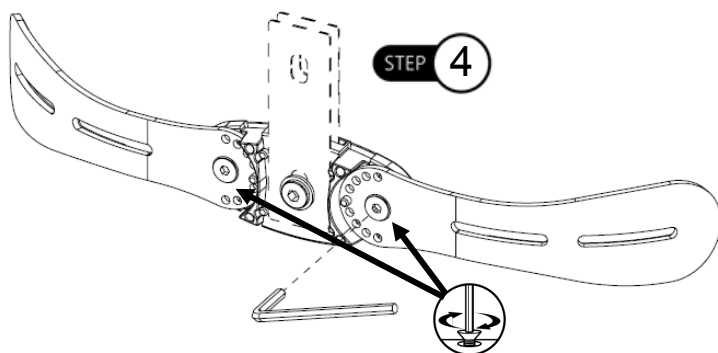
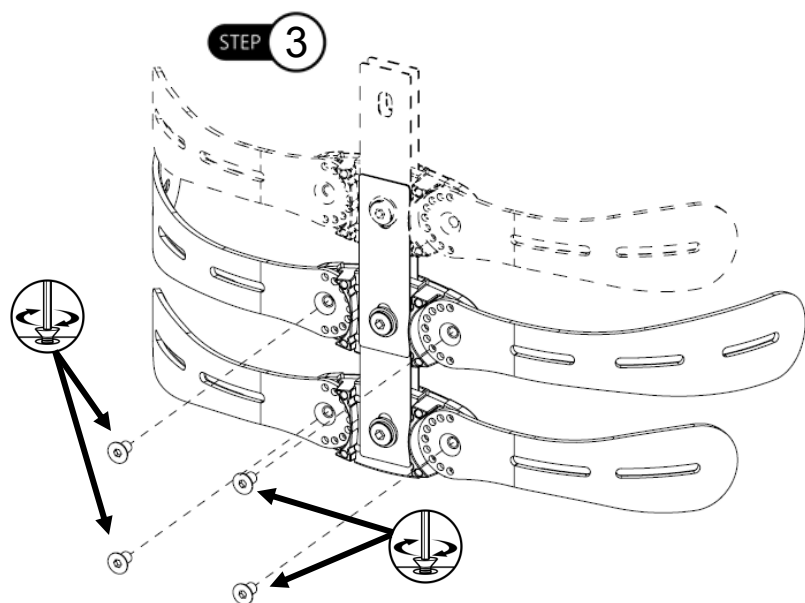
Use a 4mm T-Handle to tighten the ribs onto the central plates.

### **⚠ WARNING**

Do not use this device before receiving a clinical evaluation.



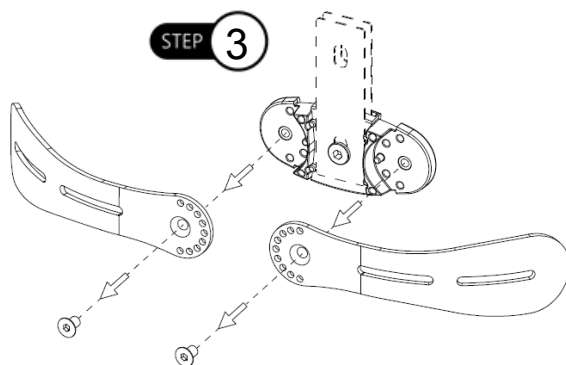
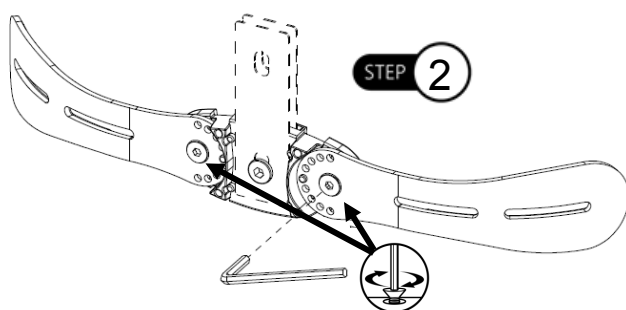
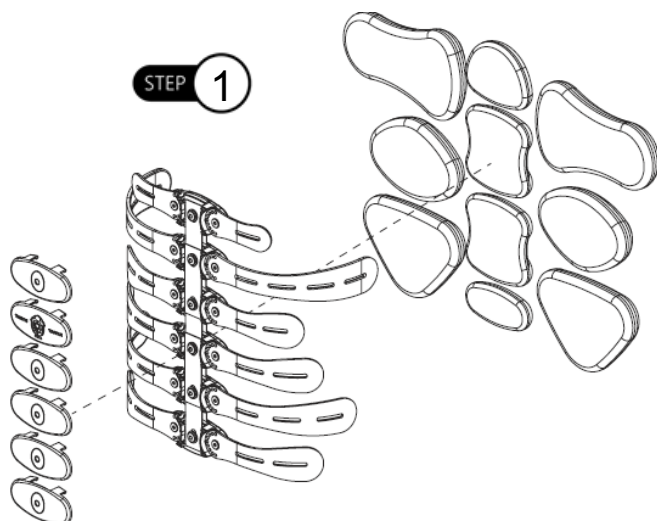


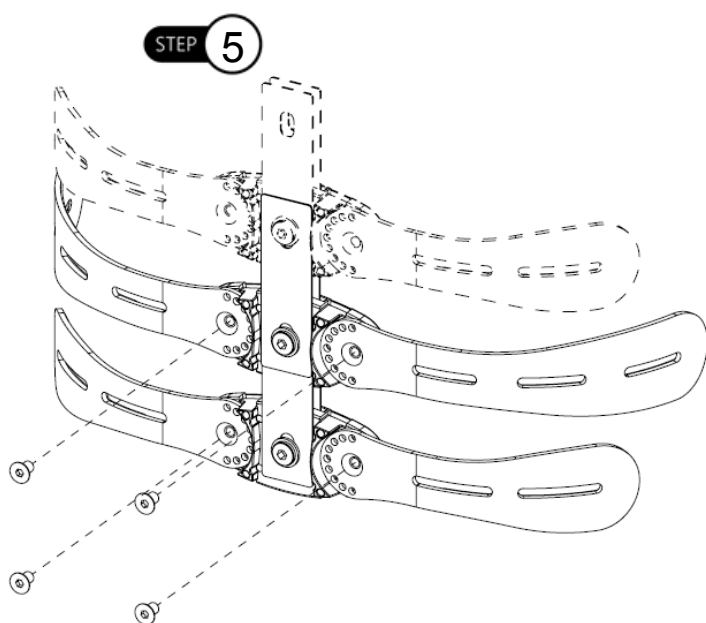
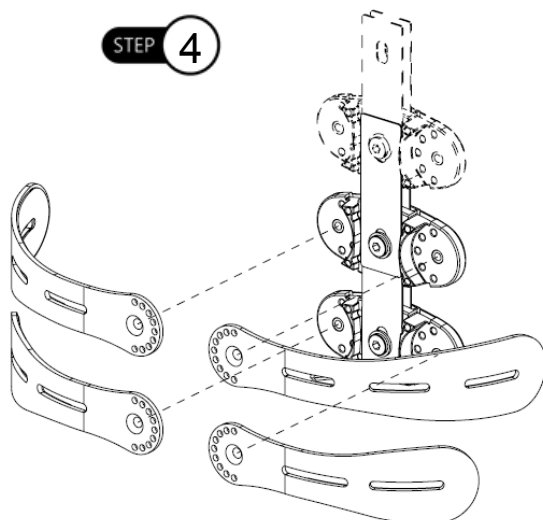


## Uninstalling Vertebrae/Ribs

### 5.3

Using the 4mm T-Handle, loosen the M6 screws to remove the ribs.





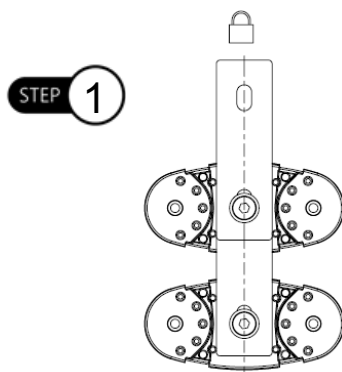
## Adjustment of Vertebrae/Ribs

## 5.4

### NOTICE

Extra pins are NOT provided in the hardware package. Remove pins in an area where they are easily retrievable if dropped. Keep in a secure location when not in use.

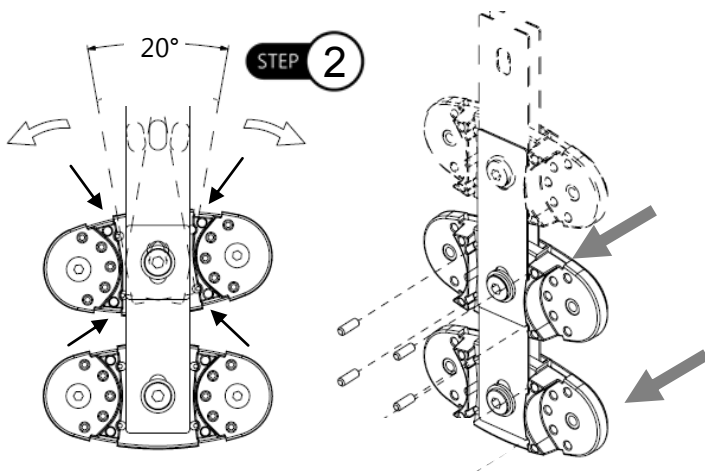
\*Step 1 shows standard configuration of vertebra when received.



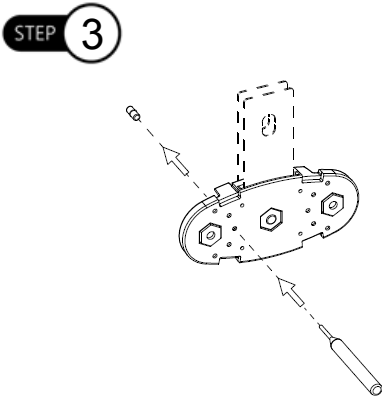
The angle of the vertebra's can be maneuvered up to 20° to the left or right.

**Step 2:** To adjust the angle of the vertebrae, remove the pins (4 total on each vertebra) by pushing from the front of the back, outward.

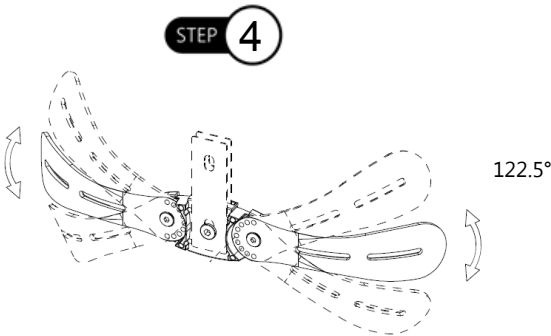
Adjust the vertebrae to the desired angle and lock down center bolt to secure.



**Step 3:** Each vertebra includes two pins (one per side), which when removed (Shown in the diagram below), enable lateral inclination of the ribs 10°. Remove the pins by using the punch on the front of the back and pushing them outward.



The ribs' angles can be adjusted along the vertebra in an upward or downward direction, up to 122.5°. Reference diagram below.

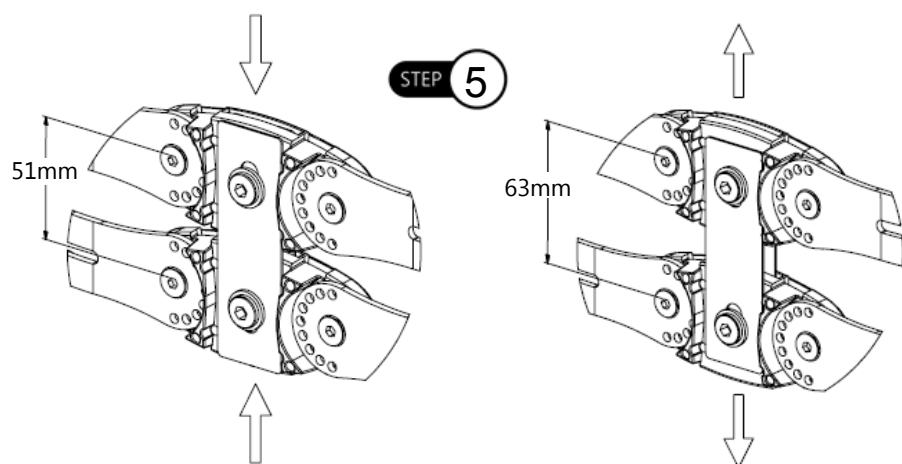


Tighten M6 screws with M5 T-Handle to secure. Reference *Section 4.2* on page 1 for proper torque specifications.

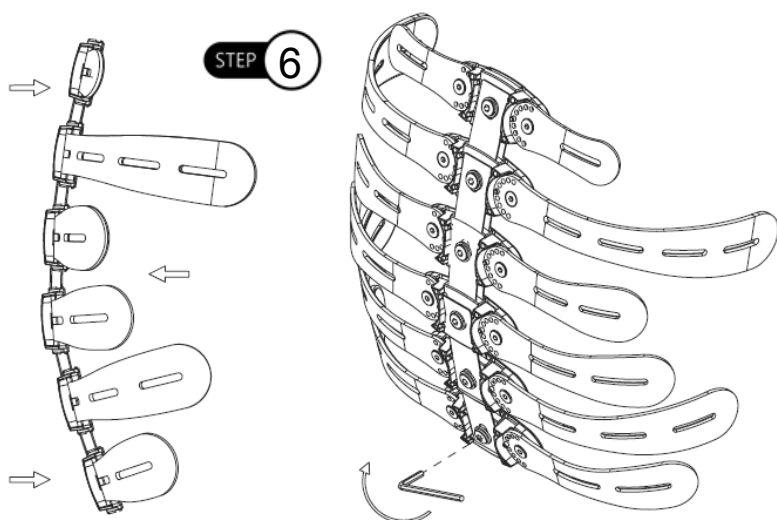
The screws **MUST** be placed back onto staves in order to completely secure to the vertebra.

**Step 5:** The total height of the back can be adjusted by tightening/loosening the vertebrae with a 5mm T-Handle and compressing or pulling the central plates together or apart.

- A minimum distance of 51mm between staves is possible when central plates are compressed.
- A maximum distance of 63mm between staves is possible when the central plates are separated.



**Step 6:** To bend the vertebrae in a desired angle, untighten the screws on the centerplates and apply approximately 25Nm of force down on the vertebrae.



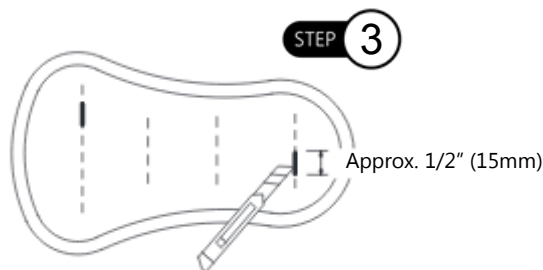
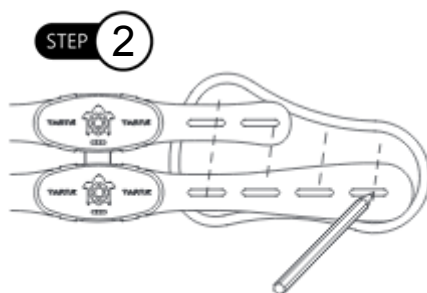
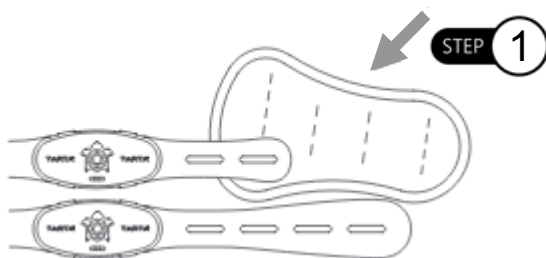
## Pad Installation

## 5.5

**Step 1:** Locate and place the pad on the correct corresponding ribs\*.

**Step 2:** Using a pencil, indicate the location of screws by marking on the back of the pad.

**Step 3:** Cut a slot into the back of the pad, breaking through the backing of the pad.

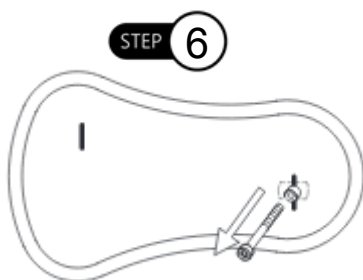
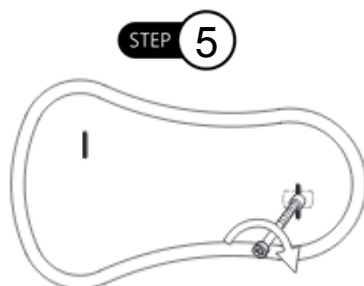
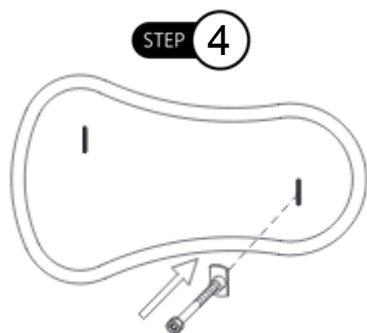


\* Reference the Tarta User Manual for the corresponding pad to rib directions.

**Step 4:** After the cuts have been made in the desired areas on the back of the pad, use the provided t-nuts and insert into the slot on the back of the pad.

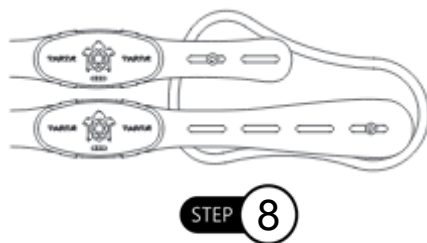
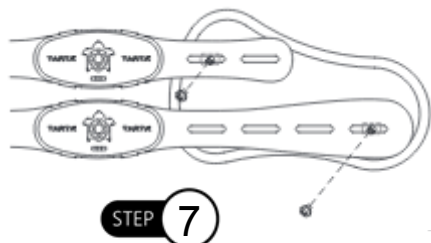
**Step 5:** Turn the T-nut a quarter turn clockwise.

**Step 6:** Remove screw from the pad.



**Step 7:** Place pad onto Tarta back. Ensure slots from vertebrae and the holes made on the pad are matched up.

**Step 8:** When pad is oriented in the correct location on the staves, tighten the pad onto the staves by using the Allen wrench.





## Mounting Hardware

### 6.1

#### Tension Strap

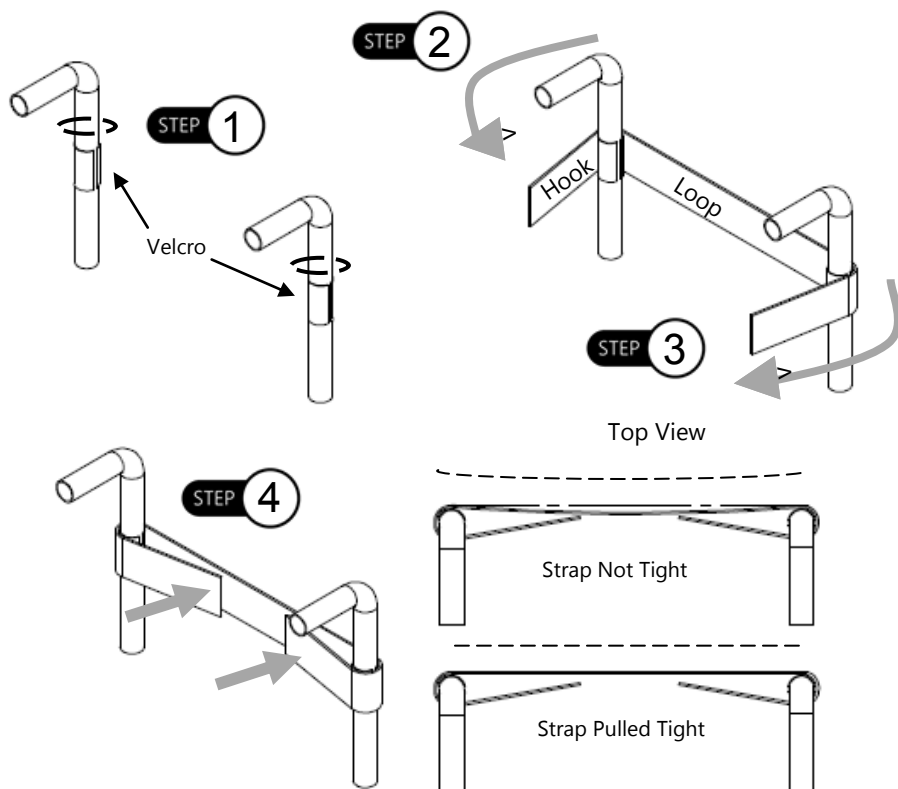
The tension strap adds support and helps stabilize the desired section of the Tarta back. The tension strap should be installed after the back has been installed and final adjustments have been made.

**Step 1:** Place provided Velcro strip directly on the middle section of the canes.

**Step 2:** Wrap the tension strap around the canes. The tighter the strap is pulled the more rigid the back will be.

**Step 3:** Attach the strap that has both Hook and Loop Velcro on either side first. The Hook side of the Velcro should be facing outward to receive the second strap.

**Step 4:** Wrap the other side of the strap with the Loop side onto the tension strap.



To adjust the tension strap, pull the ends of the strap and separate the Velcro. Pull or loosen the strap to the desired tension and reattach the straps when complete.

**NOTICE**

All mounting hardware is ordered separately from a Tarta back.

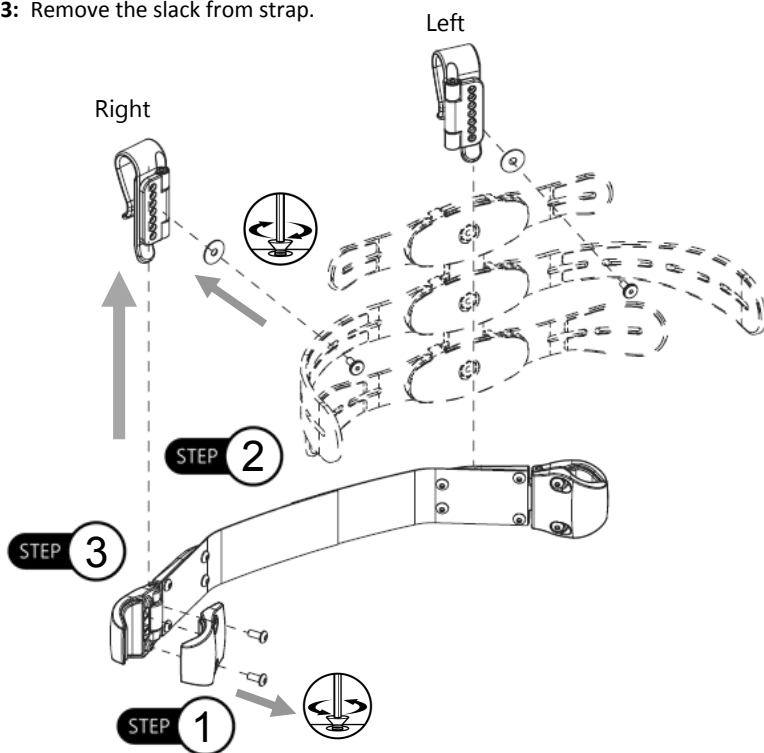
**Clamp Strap-No Bar**

To install the Tarta backrest onto the chair:

**Step 1:** Loosen the M6 screws in order to remove the clamp.

**Step 2:** Position the strap on chair and tighten M5 screws to secure onto canes.

**Step 3:** Remove the slack from strap.

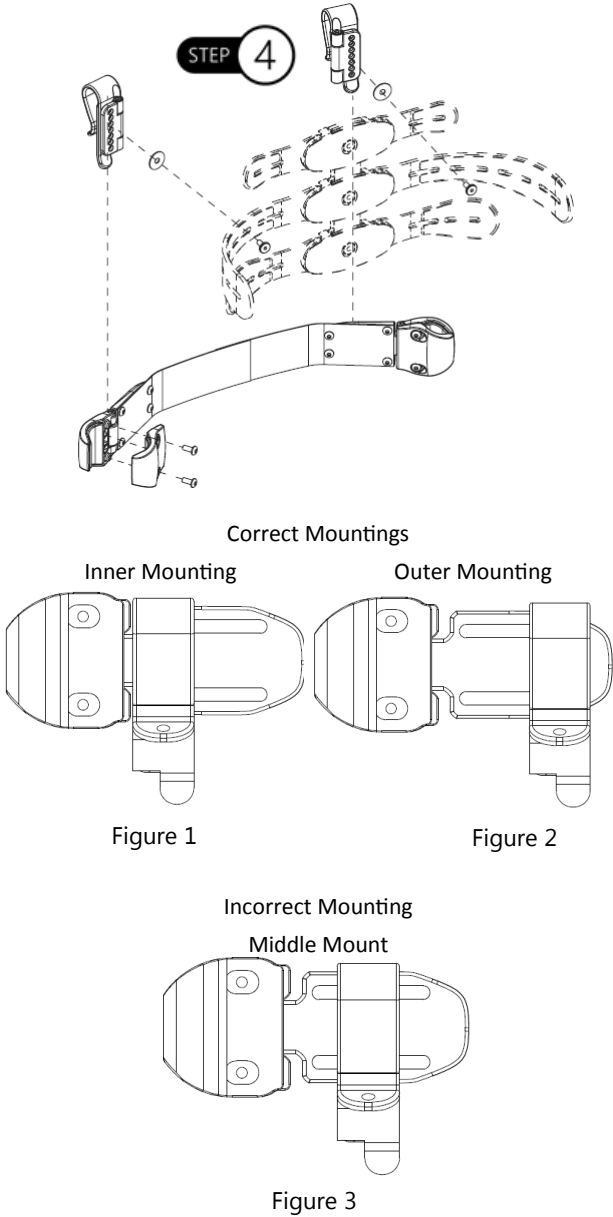


**CAUTION** To remove the hooks properly, pull the hooks up, not out.

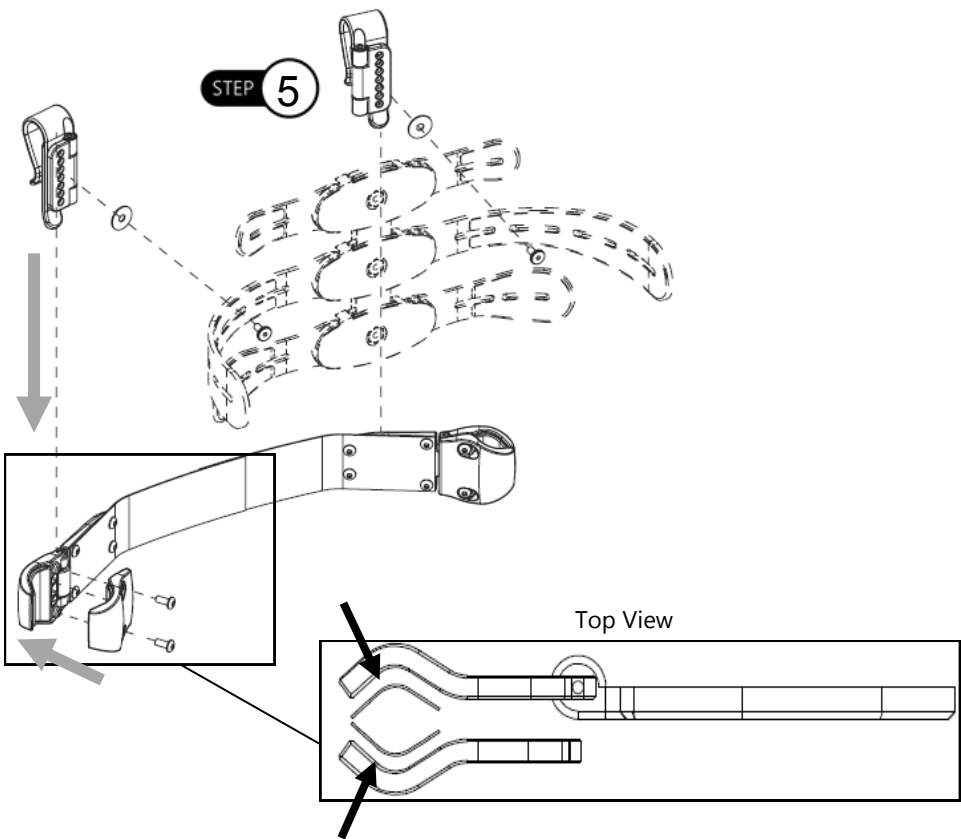
The hooks can attach to canes varying in diameter from 19 to 25mm.

**Step 4:** Determine the proper location of hooks.

\*Ensure the hooks are mounted all the way to the inside or outside of the tracks on the clamps. Mounting in the middle will cause the back to move side to side. See *Figures 1, 2 & 3* for correct and incorrect placement on the hooks.



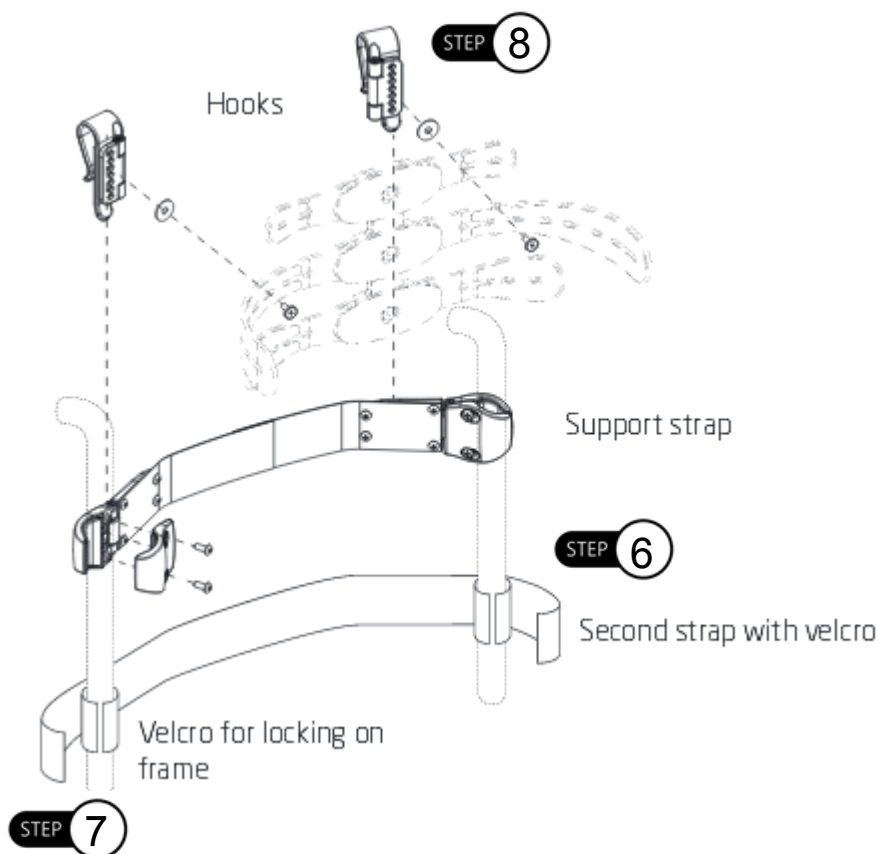
- Step 5:** Place M6 screws on inside of the back through rib/washer and tighten on the hook.
- \* Before mounting the clamp, check that the rubber insert on the clamp is properly set and not backwards.



**Step 6:** Remove logo cover from Velcro strap.

**Step 7:** Position on chair, wrap around canes and secure with Velcro directly back to itself.

**Step 8:** Secure the hooks included directly onto support strap.



### NOTICE

If the tension strap is not used, there will be more flexion on the back.

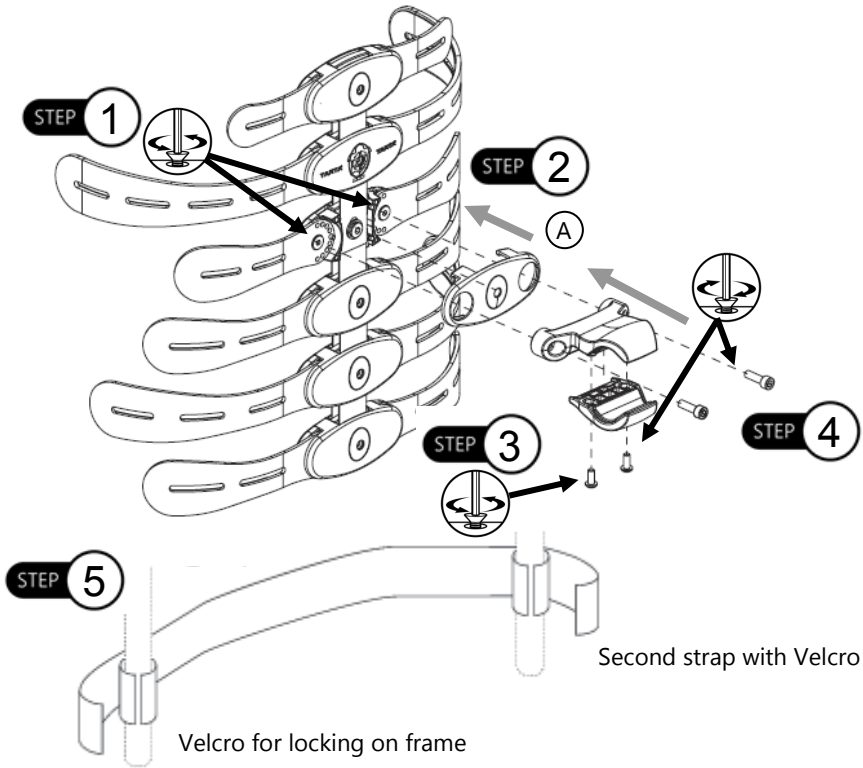
Fixed Clamp

For fixed frame wheelchairs, hook the Tarta back to the rear frame with the clamp provided.

- Step 1:** Loosen and remove the M6 bolts on the vertebra where the Fixed Clamp will be placed.
- Step 2:** Position the carter (A) on desired vertebra and snap into place. The ribs will be loose.
- Step 3:** Loosen the M6 bolts, provided with the hardware, from the underside of the clamp.
- Step 4:** Align holes of the top clamp with the carter on the vertebra and secure onto Tarta spine with M6 bolts. Align the bottom clamp to the top clamp and tighten M6 bolts. Secure onto frame.
- Step 5:** Remove logo cover from Velcro strap. Position on chair, wrap around canes and secure with Velcro directly back to itself.

NOTICE

The clamp should be mounted so that the screws are on the underside and cannot be seen.

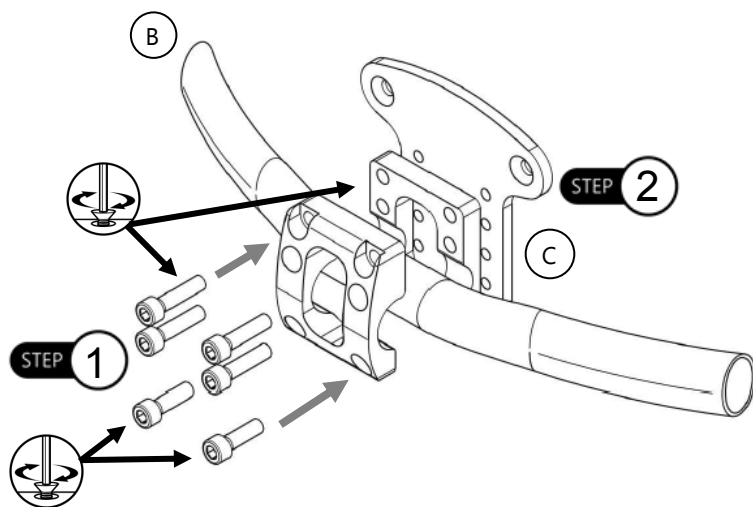


The clamp can attach to a fixed frame varying from 19 to 25mm.

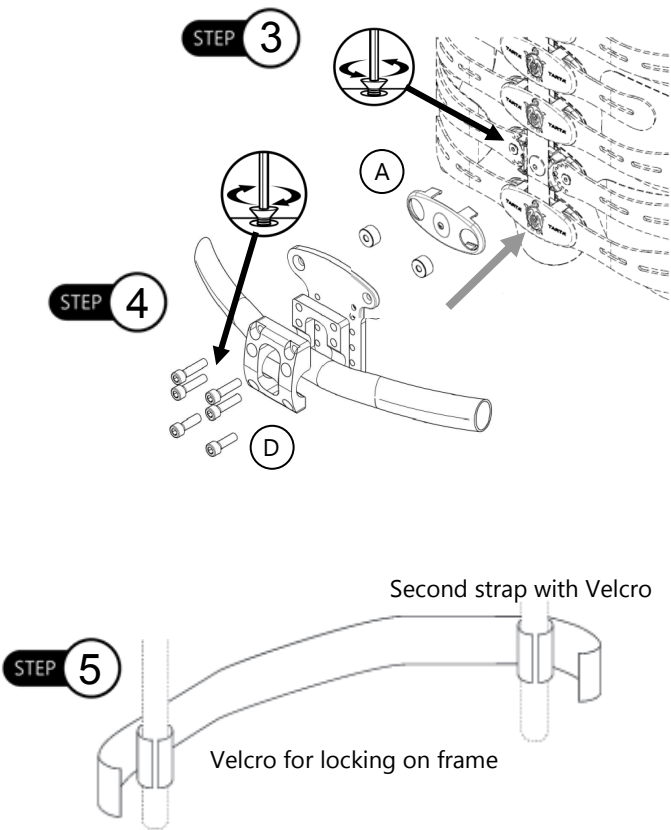
## Height Adjustable Mounting Clamp

To adjust the height of the mounting clamp on the mounting plate follow the list of instructions below:

- Step 1:** Attach and tighten clamp onto chair rigidizer bar (B) with two (2) of the six (6) M6 screws provided in hardware kit. This will secure the clamp to the bar and hold in place while preparing to secure the mounting plate.
- Step 2:** Align the Tarta mounting plate (C) with the clamp. Using the remaining four (4) M6 screws, secure and tighten clamp to plate.



- Step 3:** Determine which vertebra the mounting plate will be attached to. Remove the M6 screws on the vertebra where the clamp will be placed. Position the carter (A) on the vertebra and snap into place. The ribs will be loose. Place the two (2) spacers inside the center mount holes on the carter.
- Step 4:** Using the M6 screws provided with the mounting hardware, insert the screws into the spacers on the carter, and secure.
- Step 5:** Remove logo cover from Velcro strap. Position on chair, wrap around canes and secure with Velcro directly back to itself.



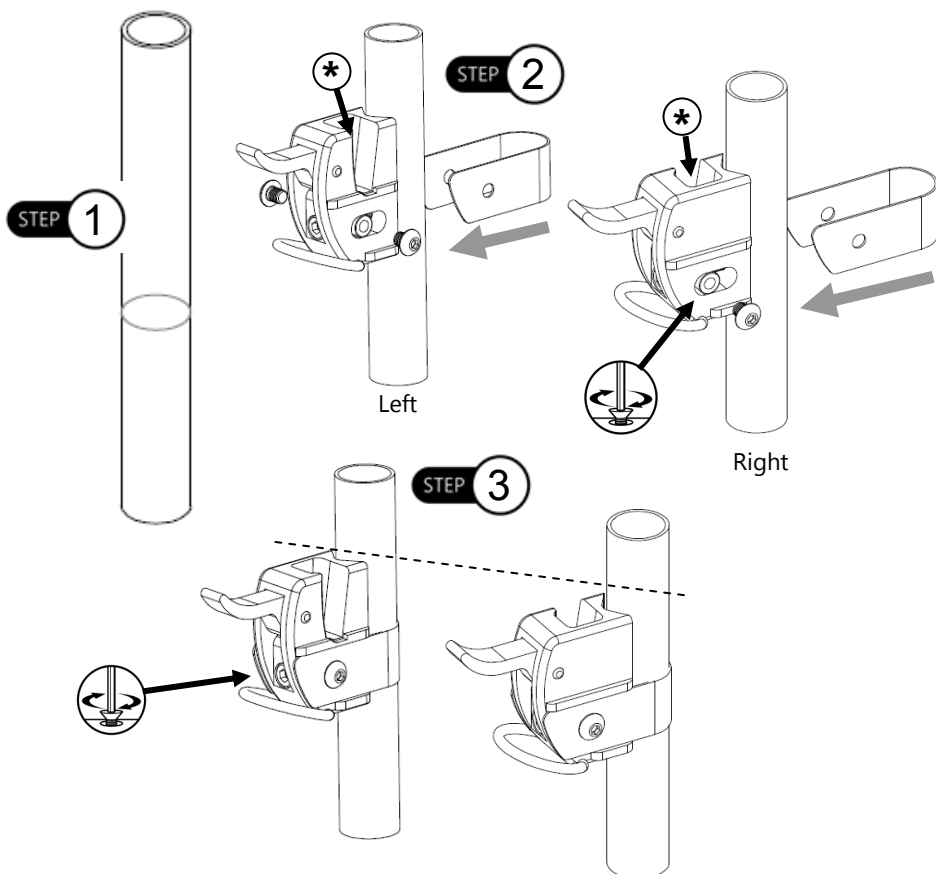


## Removable Mount

**Step 1:** Mark tubing at desired height for hardware.

**Step 2:** Align lever block to height marked on canes. The hardware is side specific. Insets on the mounting hardware should be facing inward.

**Step 3:** Slide u-clamp onto cane. Clamp should be outside mounting hardware. Insert two M6 BHS\* into hardware and tighten with 3mm T-Handle. Tighten the 4mm bolt under the locking lever to secure lever block in place.



### SAFETY

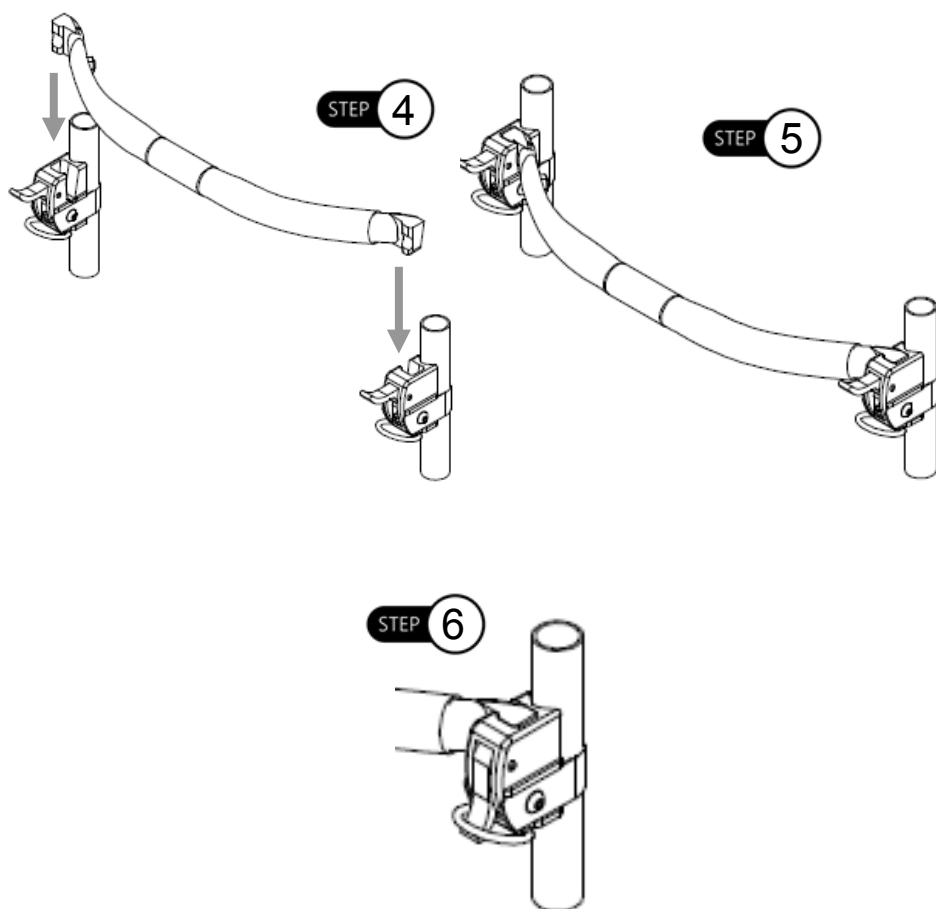
Ensure hardware is installed at the same height on the canes. Installing hardware at different heights could prevent the back from being properly installed and could cause injury.

\* Screws included in hardware package.

**Step 4:** Locate rigidizer bar. Lower rigidizer bar into hardware mounting insets.

**Step 5:** Lower the locking lever on the hardware once the bar is in place.

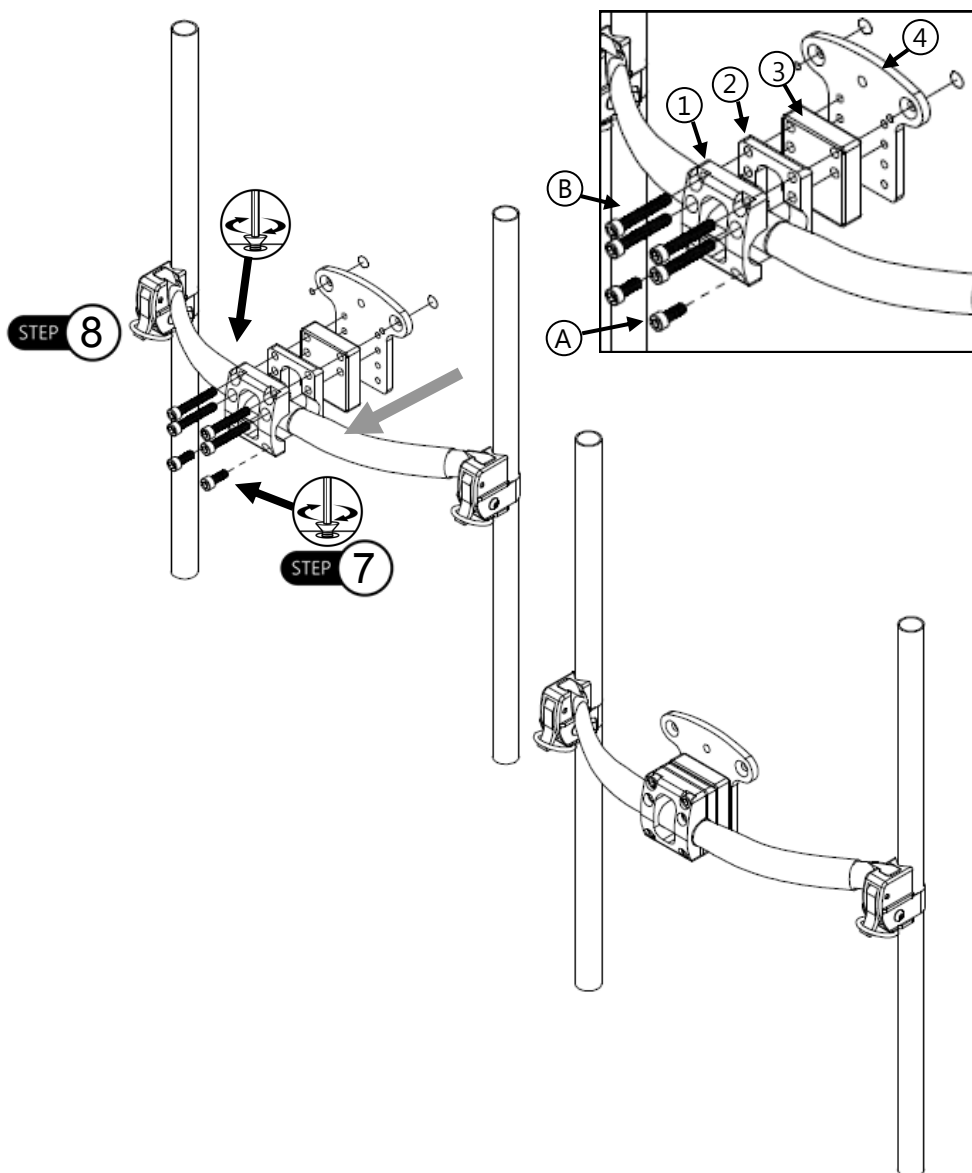
**Step 6:** When locking lever is in the down position, slide the locking rig over the lever to prevent breaking or shifting of the hardware.

**NOTICE**

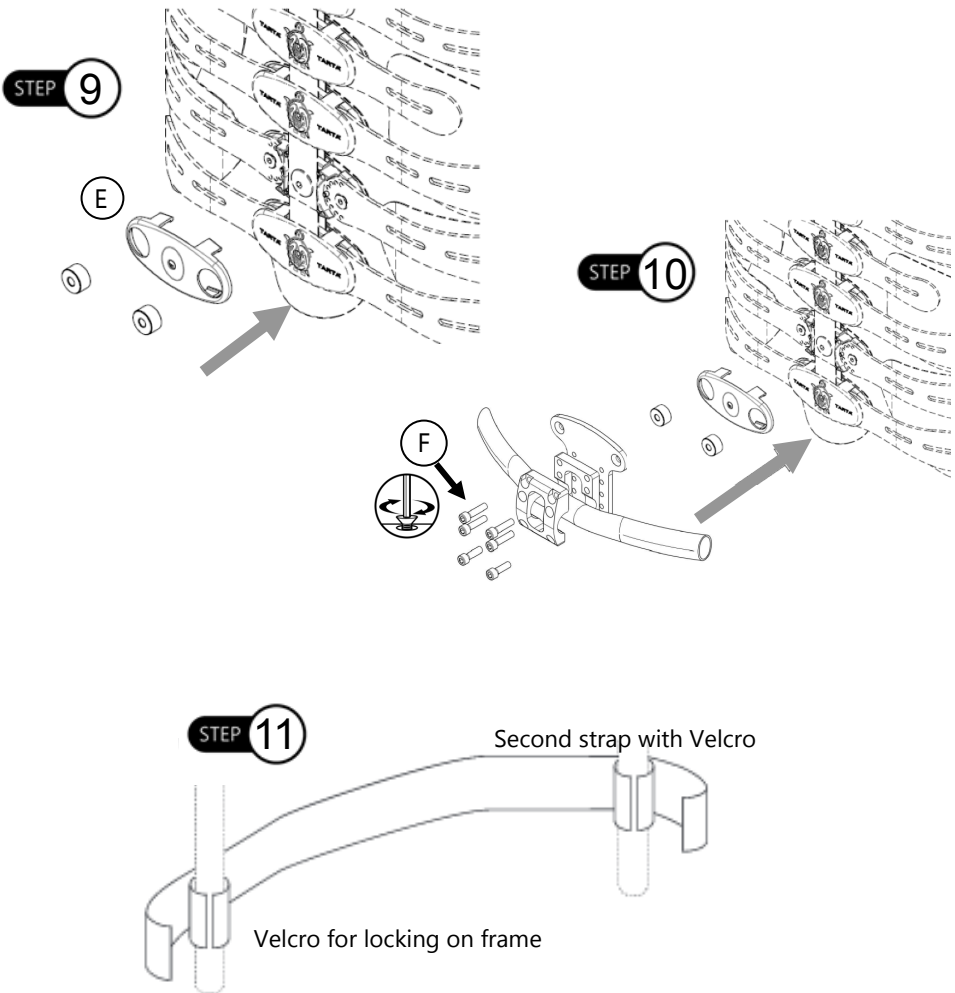
Images shown from behind the chair.

**Step 7:** Using a 5mm T-Handle, secure clamp onto rigidizer bar with the provided M6 x 16mm SHS (A). The M6 screws will secure the front of the clamp (1) to the back (2).

**Step 8:** With a 5mm T-Handle, secure the spacer (3) and Tarta plate (4) onto the clamp. Secure the rigidizer bar using the M6 x 40mm SHS (B).



- Step 9:** Determine which vertebra the hardware will be mounted to. Remove the carter from the vertebra and replace with the provided carter containing center mount holes (E). Position the carter on the vertebra and snap into place. The ribs will be loose. Place the two spacers inside the center mount holes on the newly installed carter.
- Step 10:** Align the Tarta back with the Tarta Plate (D). Secure and tighten the M6 x 30mm FHS (F).
- Step 11:** Remove logo cover from Velcro strap. Position on chair, wrap around canes and secure with Velcro directly back to itself.



## Width Adjustment of Rigidizer Bar

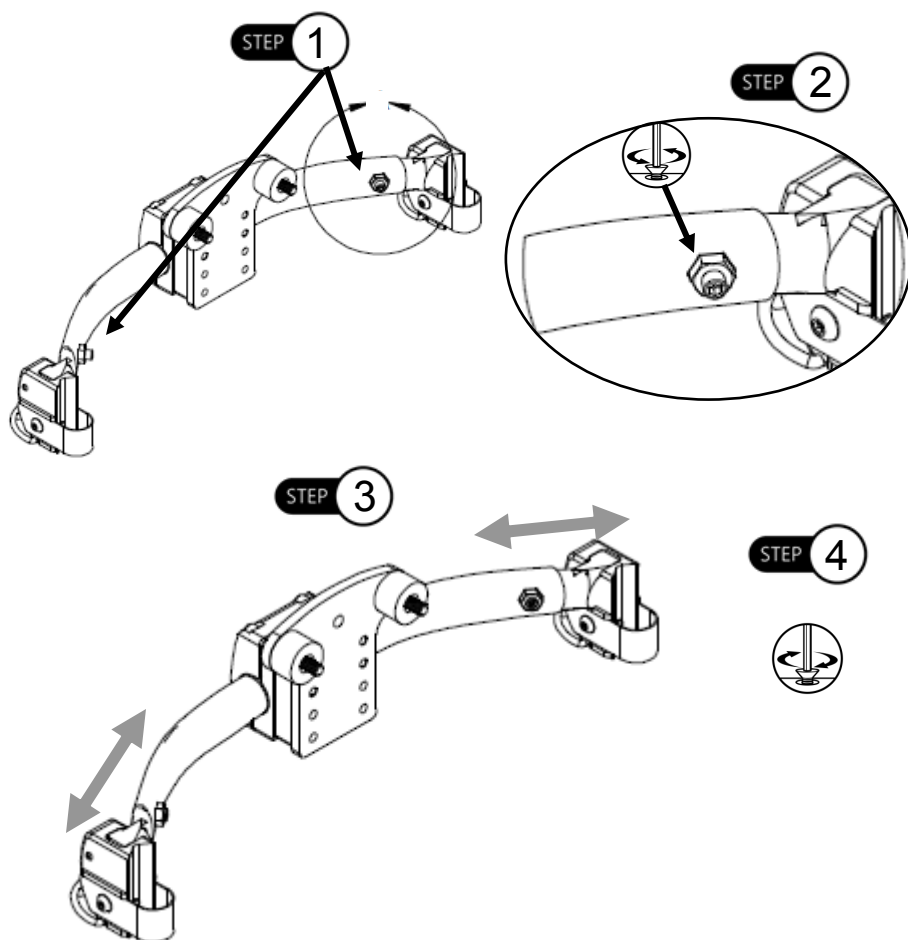
## 6.2

**Step 1:** Locate the M6 set screw and M5 nut on the rigidizer bar.

**Step 2:** With a 3mm T-Handle, slightly loosen the set screw. Do not loosen completely as the M6 nut will fall from the bar.

**Step 3:** Slide arms of rigidizer bar outward until the desired width is achieved.

**Step 4:** Ensure the width properly fits on the chair and tighten the M6 set screws.



Our products are designed, manufactured, and produced to the highest of standards. If any defect in material or workmanship is found, Stealth Products will repair or replace the product at our discretion. Any implied warranty, including the implied warranties of merchantability and fitness for a particular purpose, shall not extend beyond the duration of this warranty. Stealth Products, LLC does not warrant damage due to, but not limited to:

- Misuse, abuse, or misapplication of products.
- Modification of product without written approval from Stealth Products, LLC.
- Any alteration or lack of serial number, where applicable, will automatically void this warranty.
- Stealth Products, LLC is liable for replacement parts only.
- Stealth Products, LLC is not liable for any incurred labor costs.

No person is authorized to alter, extend, or waive the warranties of Stealth Products, LLC.

Stealth Products warrants against failure due to defective materials or workmanship:

Covers: 2 years

Hardware: 5 years

Electronics: 3 years

## In Case of Product Failure

## 7.1

In the event of product failure covered by our warranty, please follow the procedures outlined below:

1. Call Stealth at +1 (512) 715-9995 or toll free +1-800-965-9229.
2. Request the Returns Department or obtain an RA from the Returns Department and follow department or documentation instructions.

This image shows a full page of blank handwriting practice paper. It features 20 evenly spaced, horizontal blue lines running across the entire width of the page. The lines are thin and consistent in color and thickness, providing a guide for letter height and placement. There are no margins, text, or other markings on the paper.

This image shows a full page of blank handwriting practice paper. It features approximately 20 evenly spaced, thin grey horizontal lines across the entire page. There are no margins, text, or other markings present.



[illegible]



Stealth Products, LLC. • [info@stealthproducts.com](mailto:info@stealthproducts.com) • [www.stealthproducts.com](http://www.stealthproducts.com)  
+1(800) 965-9229 | +1(512) 715-9995 | 104 John Kelly Drive, Burnet TX 78611