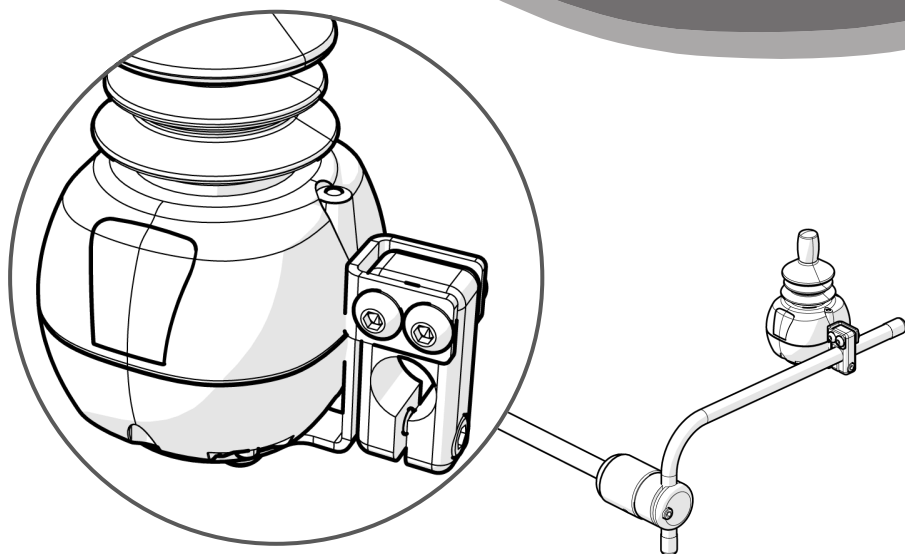




## Install Manual

**Stealth Products**

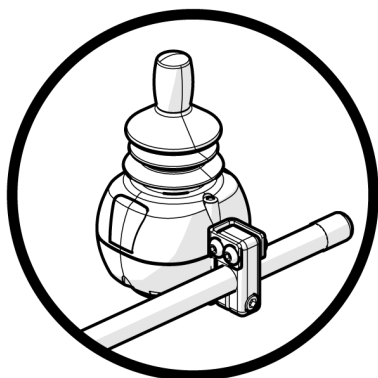
Mounting Hardware



# GAT472P-M

IDM-ALLROUND-9/IDM-ARLITE-9 Gatlin Mount

For GAT400 Series Mounts



### INSTALLATION INSTRUCTIONS FOR

**Stealth Products:** IDM-ALLROUND-9

IDM-ARLITE-9

**Mo-Vis:** P002-71 All Round Joystick  
P002-72 All Round Lite Joystick

## Stealth Commitment

## 1.1

Stealth Products strives for 100% customer satisfaction. Your complete satisfaction is important. Please contact us with feedback or suggested changes that will help improve the quality and usability of our swing away hardware. You may reach us at:



Stealth Products, LLC

104 John Kelly Drive, Burnet, TX 78611

Phone: (512) 715-9995

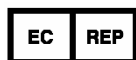
Toll Free: 1(800) 965-9229

Fax: (512) 715-9954

Toll Free: 1(800) 806-1225

info@stealthproducts.com

www.stealthproducts.com



MDSS GmbH

Schiffgraben 41

30175 Hannover, Germany



Installation Date:

---

Dealer:

---




Dealer Stamp:

Serial Number:

# Warning Labels

## 2.1

Warnings are included for the safety of the user, client, operator and property. Please read and understand what the signal words **SAFETY**, **NOTICE**, **CAUTION**, **WARNING** and **DANGER** mean, how they could affect the user, those around the user, and property.

 <b>DANGER</b>	Identifies an <b>imminent</b> situation which (if not avoided) will result in <b>severe injury, death, and property damage</b> .
 <b>WARNING</b>	Identifies a <b>potential</b> situation which (if not avoided) will result in <b>severe injury, death, and property damage</b> .
 <b>CAUTION</b>	Identifies a <b>potential</b> situation which (if not avoided) will result in <b>minor to moderate injury, and property damage</b> .
<b>NOTICE</b>	Identifies important information not related to injury, but possible <b>property damage</b> .
<b>SAFETY</b>	Indicates steps or instructions for safe practices, reminders of safe procedures, or important safety equipment that may be necessary.

# Limited Liability

## 2.2

Stealth Products, LLC accepts no liability for personal injury or damage to property that may arise from the failure of the user or other persons to follow the recommendations, warnings, and instructions in this manual.

Stealth Products does not hold responsibility of final integration of final assembly of product to end user. Stealth Products is not liable for user death of injury.

# Testing

## 2.3

Initial setup and driving should be done in an open area free of obstacles until the user is fully capable of driving safely.

The hardware should always be tested without any person sitting in the wheelchair, and until every alteration of the physical installation or adjustment of the joystick is complete.

1.0 Customer Satisfaction .....i

1.1 Stealth Commitment .....i

2.0 Warnings .....ii

2.1 Warning Labels .....ii

2.2 Limited Liability.....ii

2.3 Testing .....ii

3.0 Table of Contents.....iii

4.0 Parts and Accessories ..... 1

4.1 Mounting Hardware Parts ..... 1

4.2 Tools ..... 1

5.0 Installation Instructions ..... 2

5.1 Installing Joystick and Joystick Mount ..... 2

5.2 Mounting Height Adjustment ..... 3

5.3 Horizontal Alignment ..... 4

5.4 Angle Adjustment ..... 5

6.0 Maintenance.....6

6.1 Maintenance.....6

6.2 Cleaning ..... 6

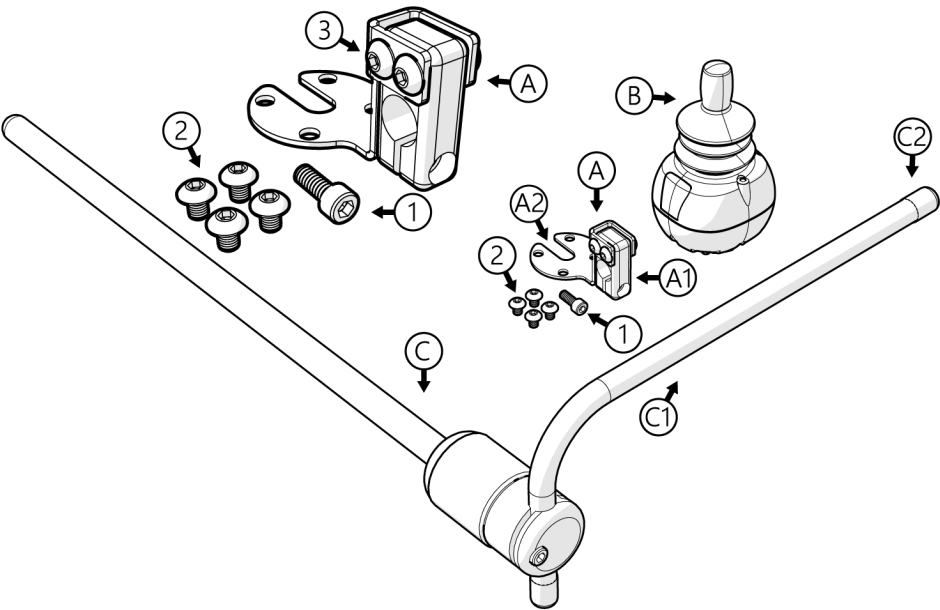
6.3 Disinfecting ..... 6

7.0 Warranty ..... 7

7.1 In Case of Product Failure ..... 7

Mounting Hardware Parts

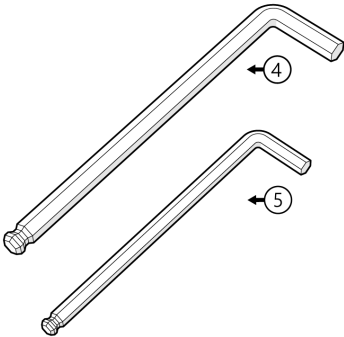
4.1



Tools

4.2

<b>A</b>	GAT472P-M Mount	A1	Clamp Block
<b>B</b>	IDM-ALLROUND-9/ IDM-ARLITE-9	A2	Joystick Bracket
<b>C</b>	Gatlin <sup>1</sup>	C1	Arm
<b>1</b>	Clamp Screw <sup>2</sup>	C2	Bar Plug
<b>2</b>	Joystick Bracket Screws <sup>2</sup>		
<b>3</b>	Clamp Block Screws <sup>2</sup>		
1. Not included with mount			
2. See Tools table			

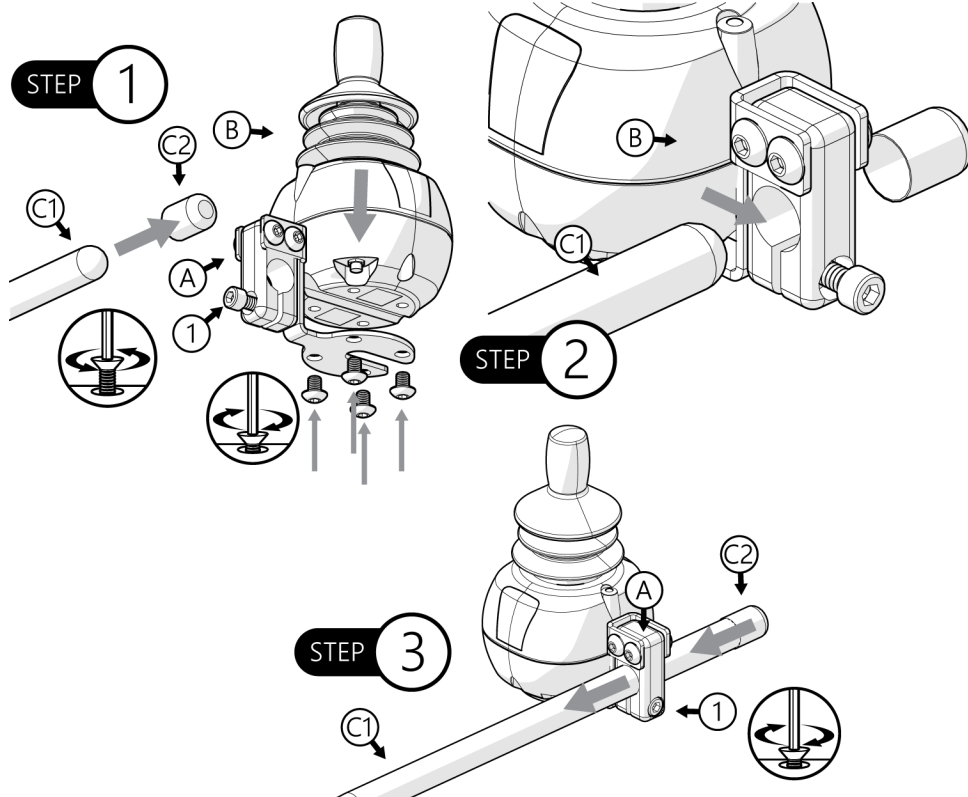


Description		Qty
<b>1</b>	M4 x 0.8 x 12mm SHS (B2) Clamp Mount Screw	1
<b>2</b>	M4 x 0.7 x 6mm BHS (A2) Joystick Bracket Screws	4
<b>3</b>	M5 x 0.7 x 6mm BHS (A1) Clamp Block Screws <sup>1</sup>	4
<b>4</b>	5mm Hex Key (Allen Wrench) <sup>2</sup>	1
<b>5</b>	4mm Hex Key (Allen Wrench) <sup>2</sup>	1

1. Included only with IDM-ALLROUND-9/IDM-ARLITE-9  
2. Not Included

**⚠ CAUTION**

**DO NOT OVER TIGHTEN SCREWS.** This could cause wearing of screws or joystick threads, causing the client to lose efficient control.

**Installing Joystick & Mount****5.1**

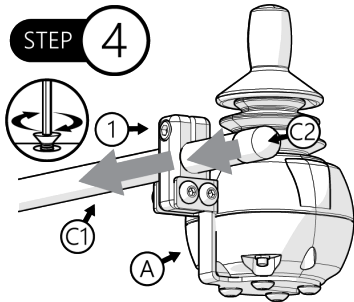
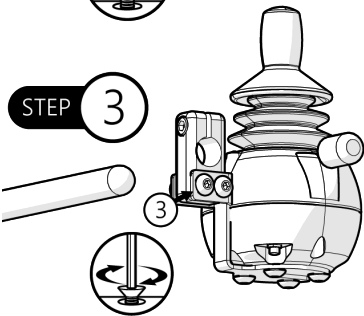
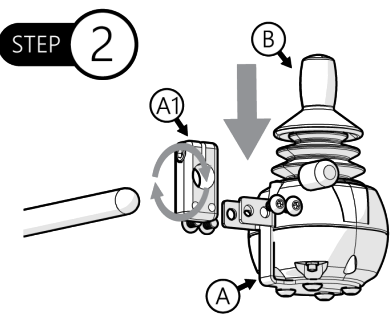
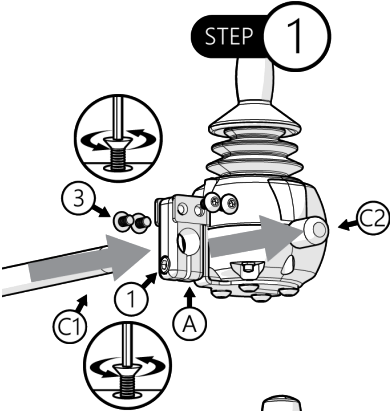
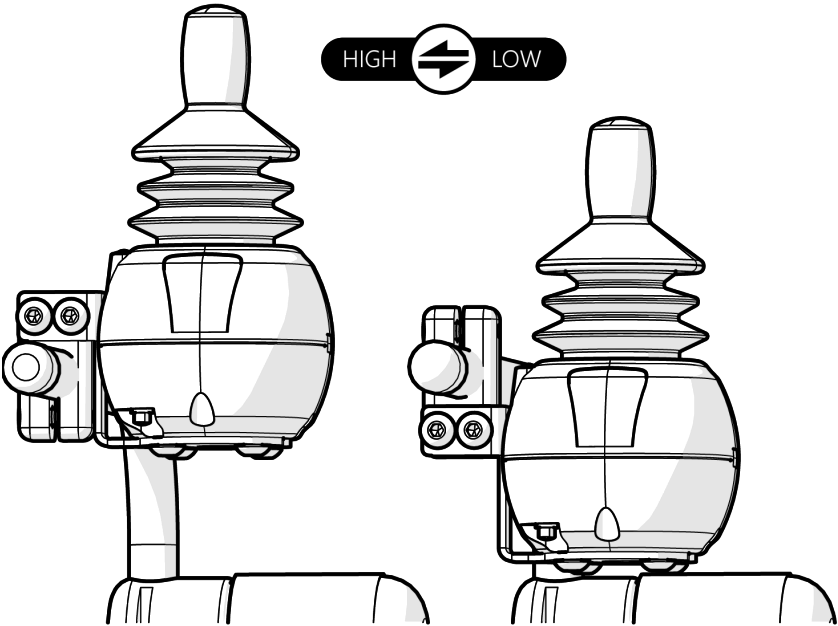
**Step 1:** Remove Bar Plug (C2). Position joystick (B) into joystick bracket (A2) and tighten joystick bracket screw (2). Do not over tighten.

**Step 2:** Align joystick with mount to Gatlin arm (C1).

**Step 3:** Slide clamp block (A) into arm (C1) to desired horizontal position. Tighten clamp screw, but do not over tighten. Replace bar plug (C2).

Mounting Height Adjustment

5.2



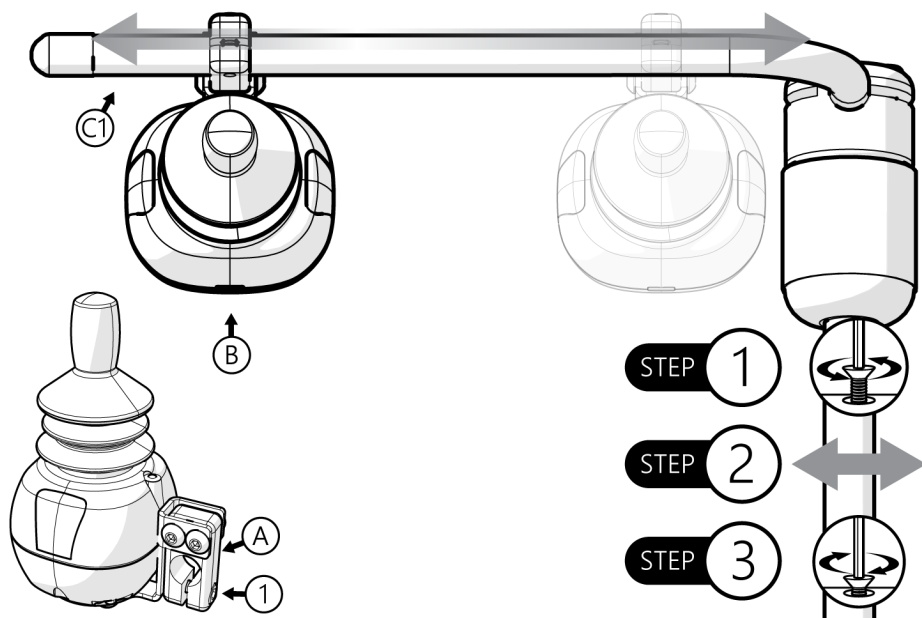
## Mounting Height Adjustment

### 5.2

- Step 1:** Remove bar plug (C2). Loosen clamp screw (1) and slide out mount (A). Loosen joystick bracket screws (3).
- Step 2:** Rotate mount clamp (A1) on its own axis, make sure clamp screw (1) faces away from the user. Align mount clamp (A1) screw slots to joystick bracket (A2) screw slots.
- Step 3:** Tighten mount clamp screw (3), but do not over tighten.
- Step 4:** Slide mount back to arm (C1) position and tighten clamp screw (1). Replace plug (C2).

## Horizontal Alignment

### 5.3



- Step 1:** Loosen clamp screw (1).
- Step 2:** Slide mount (A) into desired horizontal position on arm (C1).
- Step 3:** Tighten clamp screw again.

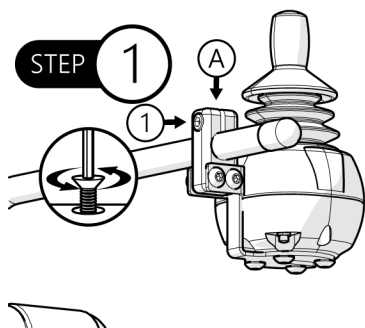
#### NOTICE

Mount clamp (A1) screw (1) should **always** face away from client.

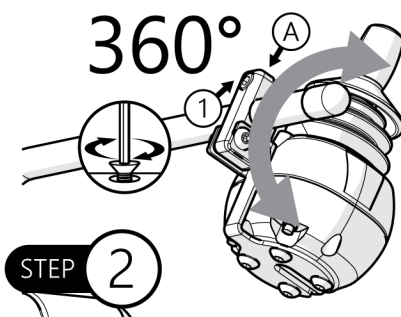


## Angle Alignment

5.4



**Step 1:** Loosen clamp screw (1).



**Step 2:** Adjust angle mount (A) to desired angle in a range of 360°. When in position tighten clamp screw. Do not over tighten.

**SAFETY**

*For joystick maintenance guidelines refer to the device's user manual.*

**Maintenance****6.1**

- Check every 6 months that screws are tight. Gently tighten any screws that may have become loose.
- Maintain that the hardware is clean and free of dust.

**Cleaning****6.2**

- Wash away surface dirt and grime with a mild dish detergent and rinse away.
- Moisten a soft cloth with water to rub away any remaining dirt.
- Rinse thoroughly with clean water.

**Disinfecting****6.1**

- Use a damp cloth with any disinfectant detergent and lightly rub hardware surface.
- Rinse thoroughly with clean water.

Our products are designed, manufactured, and produced to the highest of standards. If any defect in material or workmanship is found, Stealth Products will repair or replace the product at our discretion. Any implied warranty, including the implied warranties of merchantability and fitness for a particular purpose, shall not extend beyond the duration of this warranty. Stealth Products, LLC does not warrant damage due to, but not limited to:

- Misuse, abuse, or misapplication of products.
- Modification of product without written approval from Stealth Products, LLC.
- Any alteration or lack of serial number, where applicable, will automatically void this warranty.
- Stealth Products, LLC is liable for replacement parts only.
- Stealth Products, LLC is not liable for any incurred labor costs.

No person is authorized to alter, extend, or waive the warranties of Stealth Products, LLC.

Stealth Products warrants against failure due to defective materials or workmanship:

Covers: 2 years

Hardware: 5 years

Electronics: 3 years

## In Case of Product Failure

## 7.1

In the event of product failure covered by our warranty, please follow the procedures outlined below:

1. Call Stealth at +1 (512) 715-9995 or toll free +1-800-965-9229.
2. Request the Returns Department or obtain an RA from the Returns Department and follow department or documentation instructions.



Stealth Products, LLC. • [info@stealthproducts.com](mailto:info@stealthproducts.com) • [www.stealthproducts.com](http://www.stealthproducts.com)  
+1(800) 965-9229 | +1(512) 715-9995 | 104 John Kelly Drive, Burnet TX 78611