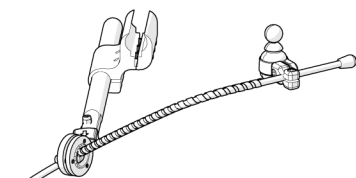
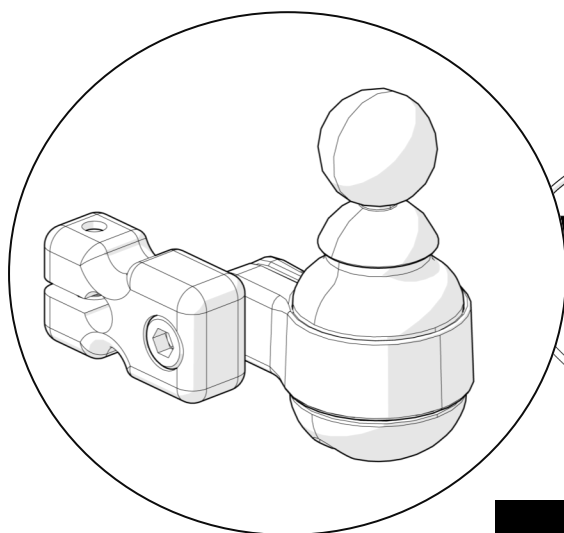




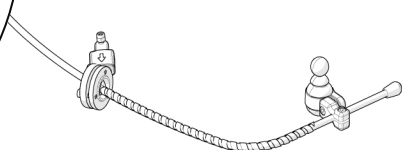
Mounting  
Hardware

**Stealth Products**

## Installation Manual



ARMS260 SERIES

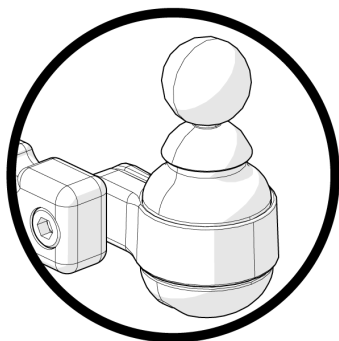


SM600 SERIES

# SM600-651M

## Micro Joystick Mount

Compatible with ARMS260 / SM600 Series



### INSTALLATION INSTRUCTIONS FOR

**Stealth Products:** IDM-MICRO-9

**mo-Vis:** P002-51 Micro Joystick

## Stealth Commitment

## 1.1

Stealth Products strives for 100% customer satisfaction. Your complete satisfaction is important. Please contact us with feedback or suggested changes that will help improve the quality and usability of our hardware. You may reach us at:



### Stealth Products, LLC

104 John Kelly Drive, Burnet, Texas 78611

+1 (512) 715-9995

+1 (800) 965-9229

info@stealthproducts.com

<http://www.stealthproducts.com>

Installation Date:

Dealer:

Dealer Stamp:

Serial Number:

## Warning Labels

### 2.1

Warnings are included for the safety of the user, client, operator and property. Please read and understand what the signal words **SAFETY**, **NOTICE**, **CAUTION**, **WARNING** and **DANGER** mean, how they could affect the user, those around the user, and property.

|   |  |
|---|--|
|  <b>DANGER</b>  | Identifies an <b>imminent</b> situation which (if not avoided) will result in <b>severe injury, death, and property damage</b> .       |
|  <b>WARNING</b> | Identifies a <b>potential</b> situation which (if not avoided) will result in <b>severe injury, death, and property damage</b> .       |
|  <b>CAUTION</b> | Identifies a <b>potential</b> situation which (if not avoided) will result in <b>minor to moderate injury, and property damage</b> .   |
| <b>NOTICE</b>   | Identifies important information not related to injury, but possible <b>property damage</b> .  |
| <b>SAFETY</b>   | Indicates steps or instructions for safe practices, reminders of safe procedures, or important safety equipment that may be necessary. |

## Limited Liability

### 2.2

Stealth Products, LLC accepts no liability for personal injury or damage to property that may arise from the failure of the user or other persons to follow the recommendations, warnings, and instructions in this manual.

Stealth Products does not hold responsibility of final integration of final assembly of product to end user. Stealth Products is not liable for user death or injury.

## Testing

### 2.3

Initial setup and driving should be done in an open area free of obstacles until the user is fully capable of driving safely.

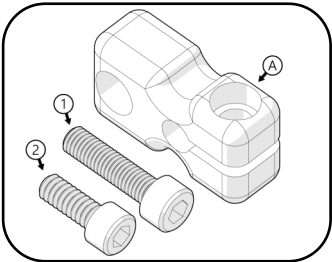
The hardware should always be tested without any person sitting in the wheelchair, and until every alteration of the physical installation or adjustment of the joystick is complete.

- 1.0 Customer Satisfaction ..... i**
  - 1.1 Stealth Commitment..... i
- 2.0 Warnings ..... ii**
  - 2.1 Warning Labels ..... ii
  - 2.2 Limited Liability ..... ii
  - 2.3 Testing ..... ii
- 3.0 Table of Contents ..... iii**
- 4.0 Parts and Accessories ..... 1**
  - 4.1 Mounting Hardware Parts ..... 1
  - 4.2 Tools ..... 1
- 5.0 Installation Instructions ..... 2**
  - 5.1 Installing Mount and Joystick ..... 2
  - 5.2 Mounting Height Adjustment ..... 3
  - 5.3 Horizontal Alignment ..... 3
- 6.0 Functioning.....4**
  - 6.1 Basic Function.....4
- 7.0 Maintenance ..... 5**
  - 7.1 Maintenance ..... 5
  - 7.2 Cleaning ..... 5
  - 7.3 Disinfecting ..... 5
- 8.0 Warranty ..... 6**
  - 8.1 In Case of Product Failure ..... 6

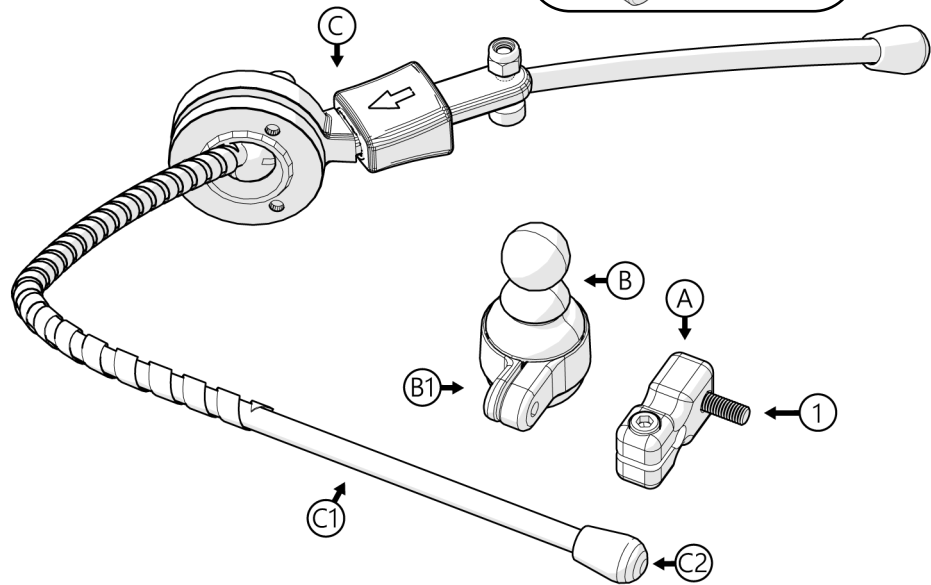
Mounting Hardware Parts

4.1

SM600-51M includes:

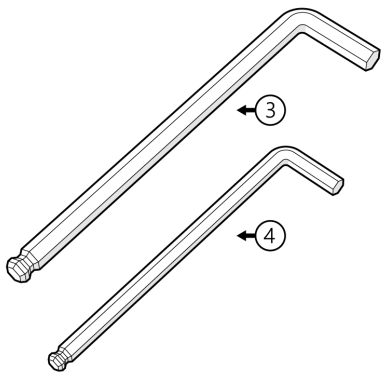


SM660 Mount reference (not included)



Tools Required (Not included)

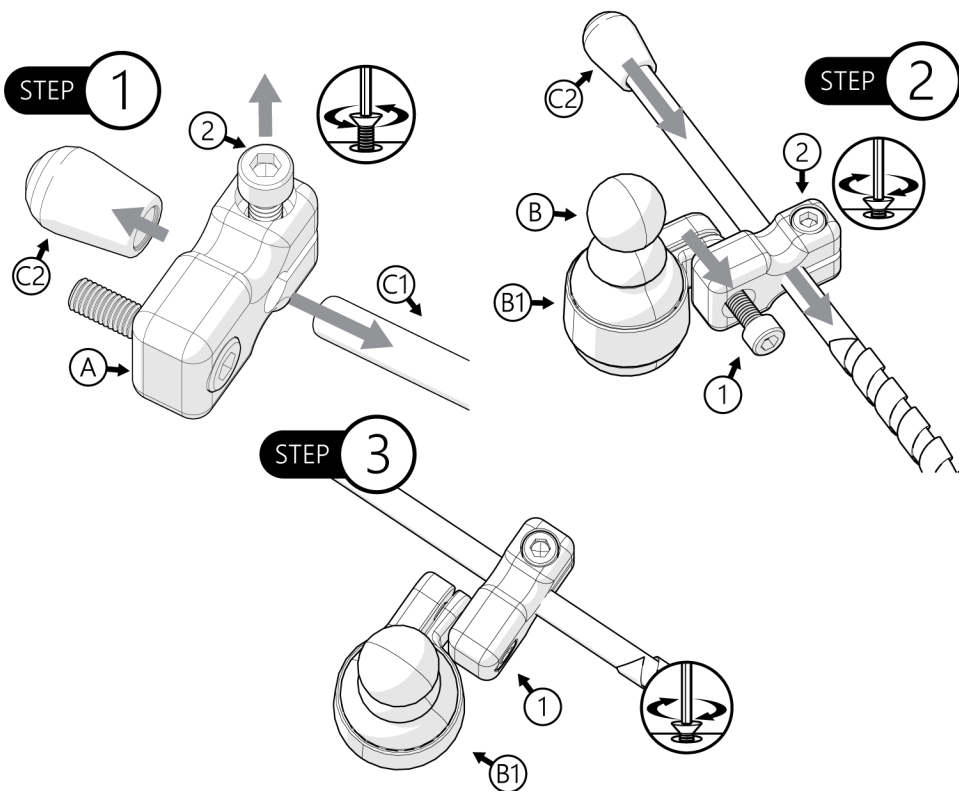
4.2



|                 |                             |                               |
|-----------------|-----------------------------|-------------------------------|
| <b>A</b>        | SM600-651M Block            |                               |
| <b>B</b>        | Micro Joystick <sup>1</sup> | <b>B1</b> Micro Mounting Ring |
| <b>C</b>        | SM600 Series <sup>1</sup>   | <b>C1</b> Lateral Rod         |
| <b>1</b>        | M5 x 0.8 x 20mm             | <b>C2</b> Safety Cap          |
| <b>2</b>        | 10-24 x 1/2" SHS            |                               |
| <b>3</b>        | 5/32 Allen (Hex Key)        |                               |
| <b>4</b>        | 4mm Allen (Hex Key)         |                               |
| 1. Not included |                             |                               |

**⚠ CAUTION**

**DO NOT OVER TIGHTEN SCREWS.** This could cause wearing of screws or joystick threads, causing the client to lose efficient control.

**Installing Joystick****5.1**

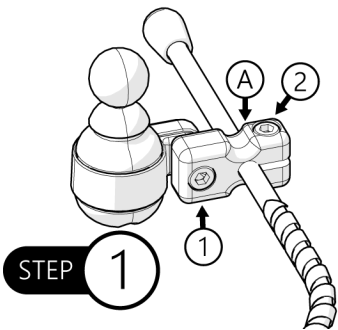
**Step 1.** Remove safety cap (C2) from swing away rod (C1). Loosen clamping screw (2) and slide block (A) onto the rod (C1.)

**Step 2.** Adjust horizontal position where desired and tighten the screw (2). Replace safety cap (C2). Hold 20mm screw (1) and position Micro Joystick Mounting Ring (B1) in place.

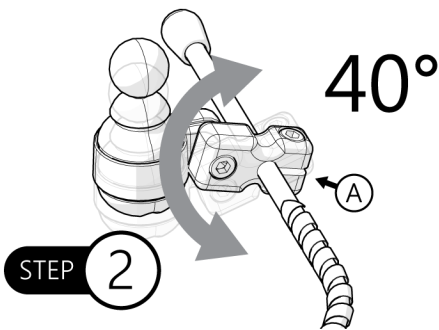
**Step 3.** Tighten the screw (1) with 4mm Allen Wrench (Hex Key), but do not over tighten.

## Mounting Height Adjustment

5.2



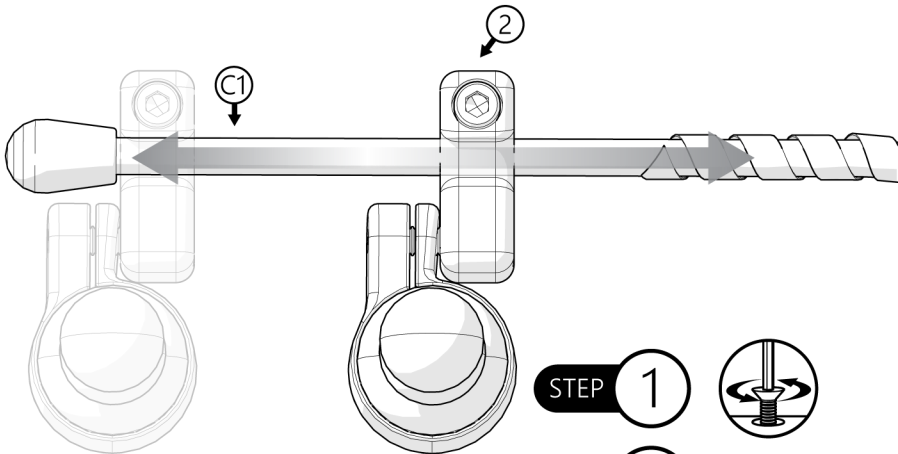
**Step 1:** Loosen both screws (1 and 2).



**Step 2:** Rotate block (A) in a 40° range to desired height. Tighten screws again.

## Horizontal Alignment

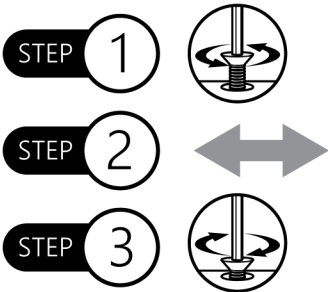
5.3



**Step 1:** Loosen clamp screw (2).

**Step 2:** Slide block (A) towards the direction on the arm (C1) desired.

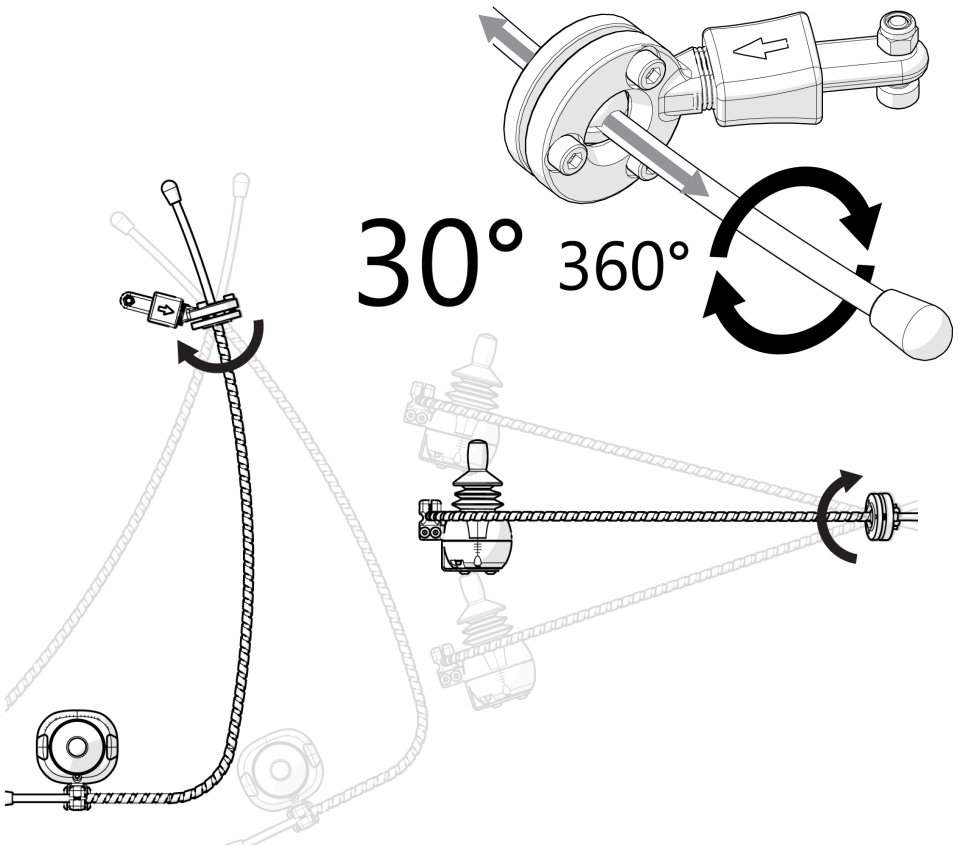
**Step 3:** Tighten screw (2) again.



## Basic Function

### 6.1

The SM651M/ARMS260 Swing Away system allows versatile and on demand adjustment. Rod can be bent and cut to accommodate specifications. It rests within the swing away ball which allows for a 30° adjustment in any direction, and rotates 360° on its own axis as well.



#### ⚠ CAUTION

**DO NOT** bend or cut rod with client on chair. Repeated rod bending will result in breakage with a possible whiplash effect.

When bending, **ALWAYS** bend rod with the bending force away from you.



**SAFETY**

*For joystick maintenance guidelines refer to the device's user manual.*

**Maintenance****7.1**

- Check every 6 months that screws are tight. Gently tighten any screws that may have become loose.
- Maintain that the hardware is clean and free of dust.

**Cleaning****7.2**

- Wash away surface dirt and grime with a mild dish detergent and rinse away.
- Moisten a soft cloth with water to rub away any remaining dirt.
- Rinse thoroughly with clean water.

**Disinfecting****7.3**

- Use a damp cloth with any disinfectant detergent and lightly rub hardware surface.
- Rinse thoroughly with clean water.

Our products are designed, manufactured, and produced to the highest of standards. If any defect in material or workmanship is found, Stealth Products will repair or replace the product at our discretion. Any implied warranty, including the implied warranties of merchantability and fitness for a particular purpose, shall not extend beyond the duration of this warranty. Stealth Products, LLC does not warrant damage due to, but not limited to:

- Misuse, abuse, or misapplication of products.
- Modification of product without written approval from Stealth Products, LLC.
- Any alteration or lack of serial number, where applicable, will automatically void this warranty.
- Stealth Products, LLC is liable for replacement parts only.
- Stealth Products, LLC is not liable for any incurred labor costs.

No person is authorized to alter, extend, or waive the warranties of Stealth Products, LLC.

Stealth Products warrants against failure due to defective materials or workmanship:

Covers: 2 years

Hardware: 5 years

Electronics: 3 years

## **In Case of Product Failure**

### **8.1**

In the event of product failure covered by our warranty, please follow the procedures outlined below:

1. Call Stealth at +1 (512) 715-9995 or toll free +1-800-965-9229.
2. Request the Returns Department or obtain an RA from the Returns Department and follow department or documentation instructions.

This image shows a blank sheet of white paper with horizontal ruling lines. The lines are evenly spaced and run across the width of the page. There are no margins, text, or other markings on the paper.



Stealth Products, LLC. • [info@stealthproducts.com](mailto:info@stealthproducts.com) • [www.stealthproducts.com](http://www.stealthproducts.com)  
+1(800) 965-9229 | +1(512) 715-9995 | 104 John Kelly Drive, Burnet TX 78611