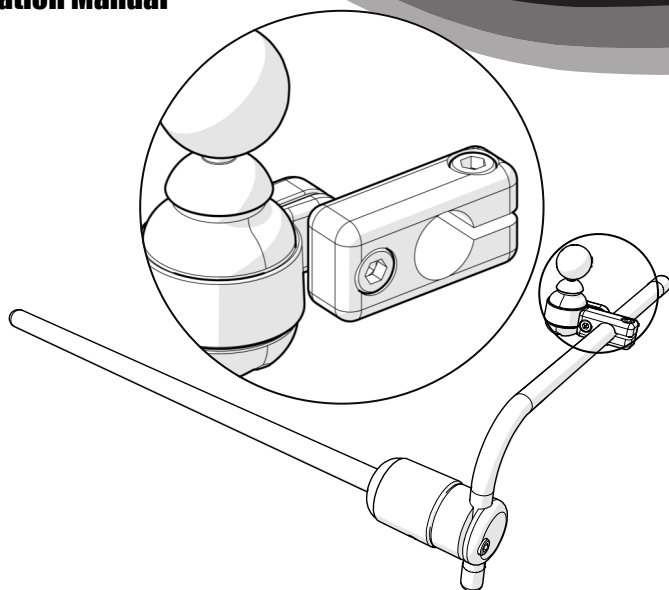




Mounting
Hardware

Stealth Products

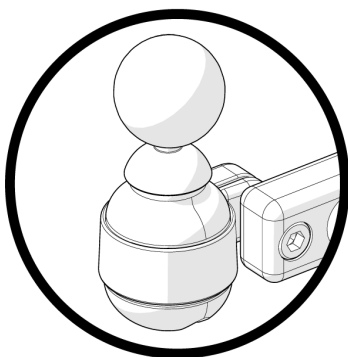
Installation Manual



GAT451M

Micro Joystick Mount

Compatible with all Gatlin 400 Series



INSTALLATION INSTRUCTIONS FOR

Stealth Products: IDM-MICRO-9

mo-Vis: P002-51 Micro Joystick

Stealth Commitment

1.1

Stealth Products strives for 100% customer satisfaction. Your complete satisfaction is important. Please contact us with feedback or suggested changes that will help improve the quality and usability of our hardware. You may reach us at:



Stealth Products, LLC

104 John Kelly Drive, Burnet, Texas 78611

+1 (512) 715-9995

+1 (800) 965-9229

info@stealthproducts.com

<http://www.stealthproducts.com>

Installation Date:

Dealer:




Dealer Stamp:

Serial Number:

Warning Labels

2.1

Warnings are included for the safety of the user, client, operator and property. Please read and understand what the signal words **SAFETY**, **NOTICE**, **CAUTION**, **WARNING** and **DANGER** mean, how they could affect the user, those around the user, and property.

 DANGER	Identifies an imminent situation which (if not avoided) will result in severe injury, death, and property damage .
 WARNING	Identifies a potential situation which (if not avoided) will result in severe injury, death, and property damage .
 CAUTION	Identifies a potential situation which (if not avoided) will result in minor to moderate injury, and property damage .
NOTICE	Identifies important information not related to injury, but possible property damage .
SAFETY	Indicates steps or instructions for safe practices, reminders of safe procedures, or important safety equipment that may be necessary.

Limited Liability

2.2

Stealth Products, LLC accepts no liability for personal injury or damage to property that may arise from the failure of the user or other persons to follow the recommendations, warnings, and instructions in this manual.

Stealth Products does not hold responsibility of final integration of final assembly of product to end user. Stealth Products is not liable for user death or injury.

Testing

2.3

Initial setup and driving should be done in an open area free of obstacles until the user is fully capable of driving safely.

The hardware should always be tested without any person sitting in the wheelchair, and until every alteration of the physical installation or adjustment of the joystick is complete.

1.0 Customer Satisfactioni

1.1 Stealth Commitmenti

2.0 Warningsii

2.1 Warning Labelsii

2.2 Limited Liabilityii

2.3 Testingii

3.0 Table of Contents..... iii

4.0 Parts and Accessories 1

4.1 Mounting Hardware Parts 1

4.2 Tools 1

5.0 Installation Instructions 2

5.1 Installing Mount and Joystick 2

5.2 Mounting Height Adjustment 3

5.3 Vertical Alignment 3

6.0 Maintenance 4

6.1 Maintenance 4

6.2 Cleaning 4

6.1 Disinfecting 4

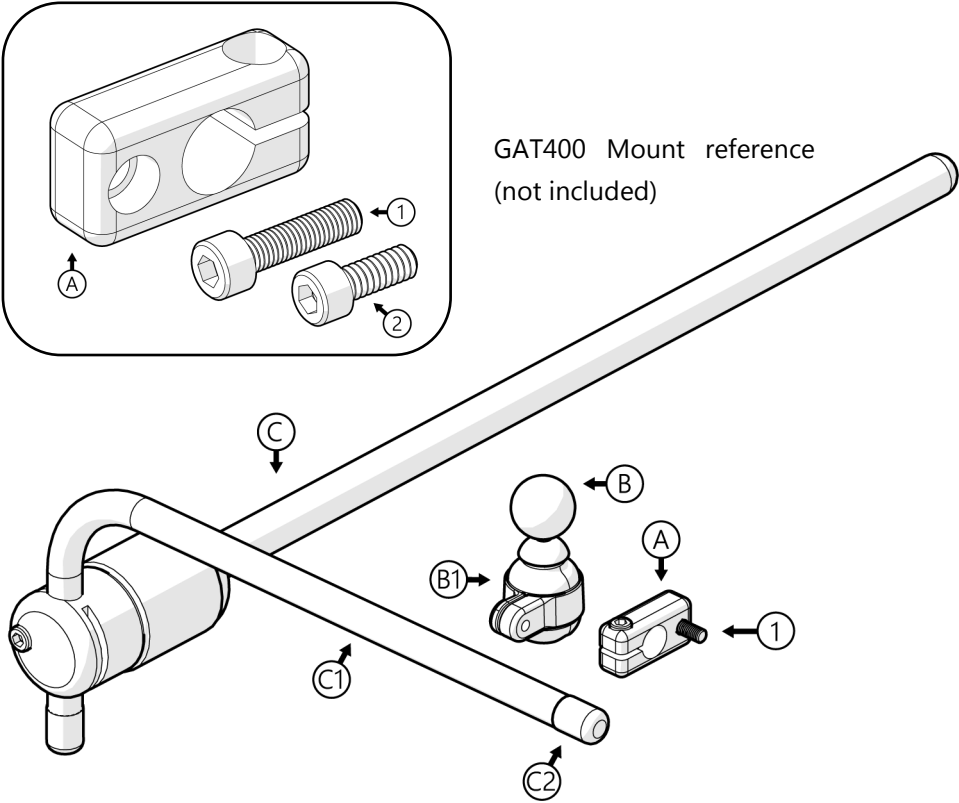
7.0 Warranty 5

7.1 In Case of Product Failure 5

Mounting Hardware Parts

4.1

GAT451M includes:



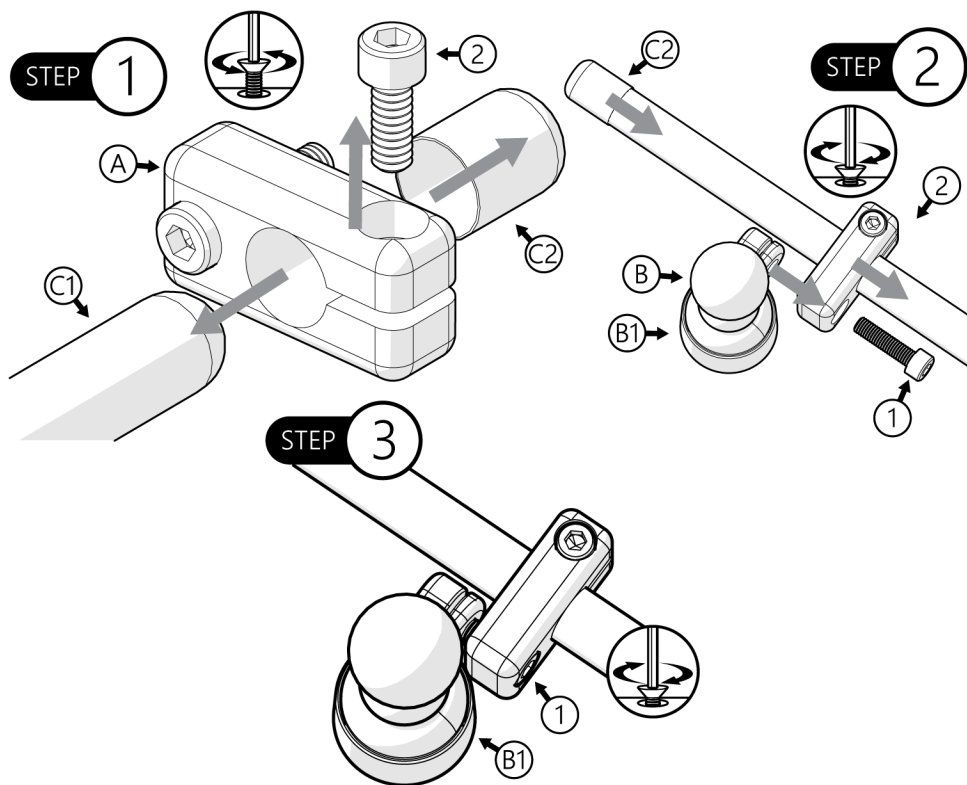
Tools Required (Not included)

4.2

A GAT451M Block	
B Micro Joystick ¹	B1 Micro Mounting Ring
C GAT400 Series ¹	C1 Arm
1 M5 x 0.8 x 20mm	C2 Bar Plug
2 10-24 x 1/2" SHS	
3 5/32 Allen (Hex Key)	
4 3mm Allen (Hex Key)	
1. Not included.	

⚠ CAUTION

DO NOT OVER TIGHTEN SCREWS. This could cause wearing of screws or joystick threads, causing the client to lose efficient control.

Installing Joystick**5.1**

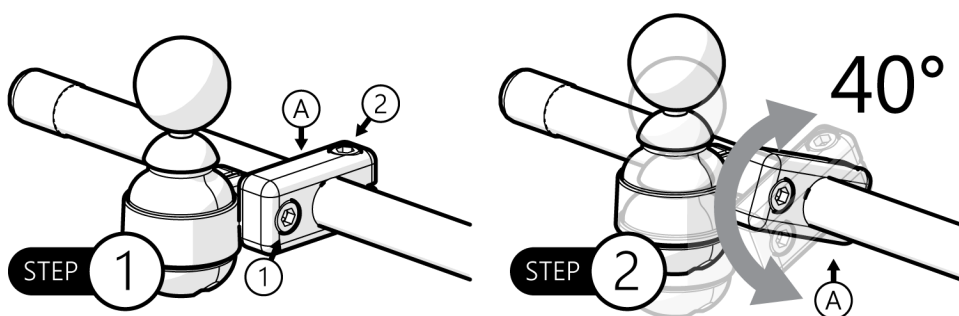
Step 1. Remove bar plug (C2) from Gatlin mount arm (C1). Loosen clamping screw (2) and slide block (A) into the arm (C1.)

Step 2. Adjust vertical position where desired and tighten the screw (2). Replace bar plug (C2). Hold 20mm screw (1) and position Micro Joystick Mounting Ring (B1) in place.

Step 3. Tighten the screw (1) with 3mm Allen Wrench (Hex Key), but do not over tighten.

Mounting Height Adjustment

5.2

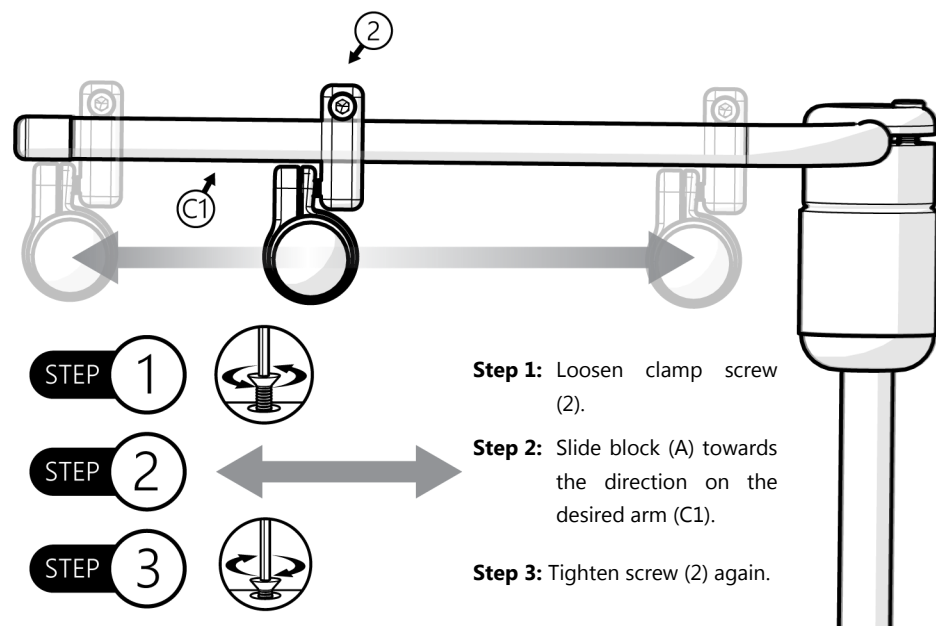


Step 1: Loosen both screws (1 and 2).

Step 2: Rotate block (A) in a 40° range to desired height. Tighten screws again.

Vertical Alignment

5.3



Step 1: Loosen clamp screw (2).

Step 2: Slide block (A) towards the direction on the desired arm (C1).

Step 3: Tighten screw (2) again.

SAFETY

For joystick maintenance guidelines refer to the device's user manual.

Maintenance**6.1**

- Check every 6 months that screws are tight. Gently tighten any screws that may have become loose.
- Maintain that the hardware is clean and free of dust.

Cleaning**6.2**

- Wash away surface dirt and grime with a mild dish detergent and rinse away.
- Moisten a soft cloth with water to rub away any remaining dirt.
- Rinse thoroughly with clean water.

Disinfecting**6.3**

- Use a damp cloth with any disinfectant detergent and lightly rub hardware surface.
- Rinse thoroughly with clean water.

Our products are designed, manufactured, and produced to the highest of standards. If any defect in material or workmanship is found, Stealth Products will repair or replace the product at our discretion. Any implied warranty, including the implied warranties of merchantability and fitness for a particular purpose, shall not extend beyond the duration of this warranty. Stealth Products, LLC does not warrant damage due to, but not limited to:

- Misuse, abuse, or misapplication of products.
- Modification of product without written approval from Stealth Products, LLC.
- Any alteration or lack of serial number, where applicable, will automatically void this warranty.
- Stealth Products, LLC is liable for replacement parts only.
- Stealth Products, LLC is not liable for any incurred labor costs.

No person is authorized to alter, extend, or waive the warranties of Stealth Products, LLC.

Stealth Products warrants against failure due to defective materials or workmanship:

Covers: 2 years

Hardware: 5 years

Electronics: 3 years

In Case of Product Failure

7.1

In the event of product failure covered by our warranty, please follow the procedures outlined below:

1. Call Stealth at +1 (512) 715-9995 or toll free +1-800-965-9229.
2. Request the Returns Department or obtain an RA from the Returns Department and follow department or documentation instructions.

This image shows a full page of blank white paper with horizontal ruling lines. The lines are evenly spaced and run across the width of the page, providing a template for writing or drawing. There are no margins, text, or other markings on the page.

[illegible]



Stealth Products, LLC. • info@stealthproducts.com • www.stealthproducts.com
+1(800) 965-9229 | +1(512) 715-9995 | 104 John Kelly Drive, Burnet TX 78611