

104 John Kelly Drive
Burnet, Texas 78611

(800) 965-9229

stealthproducts.com



EXCLUSIVE TO STEALTH PRODUCTS

No matter the season or the situation, the patented and award-winning CoolCore fabric wicks moisture away from your body, helping keep you dry and comfortable. The chemical-free blends of the fabric also help with moisture transportation and moisture evaporation, making our cushions cool better and last longer.

STEALTH PRODUCTS CUSHION SPECIFICATIONS

| Cushion Name | Weight Capacity | Weight of Cushion | Cushion Height | Width Range | Depth Range | HCPCS Code | MSRP |
|-------------------|-----------------|-------------------|----------------|-------------|-------------|-------------|------------------------------|
| Simplicity G | 400 lbs | 2 lbs | 2" | 10" - 24" | 10" - 24" | E2601/E2602 | \$110 - \$165 |
| Zen SP | 450 lbs | 3.5 lbs | 3" | 10" - 24" | 10" - 24" | E2603/E2604 | \$315 - \$425 |
| Glacial SP | 400 lbs | 2.5 lbs | 2.5" | 10" - 24" | 10" - 24" | E2603/E2604 | \$330 - \$430 |
| Premiere P | 550 lbs | 3.5 lbs | 3.5" | 16" - 22" | 16" - 22" | E2605/E2606 | \$375 - \$475 |
| Spectrum Foam SPP | 650 lbs | 3 lbs | 3" | 16" - 32" | 16" - 28" | E2607/E2608 | \$460 - \$530 \$590 >24"w |
| Spectrum Gel SPP | 550 lbs | 3.5 lbs | 3" | 14" - 24" | 16" - 24" | E2607/E2608 | \$460 - \$530 |
| Solution SPP | 500 lbs | 5.4 lbs | 3" | 10" - 24" | 10" - 22" | E2607/E2608 | \$375 - \$430 |
| Tru Comfort 2 SPP | 450 lbs | 4 lbs | 4.5" | 16" - 22" | 16" - 24" | E2607/E2608 | \$400 - \$500 |
| Essence SPP | 500 lbs | 3.5 - 5 lbs | 3.5" | 16" - 22" | 16" - 24" | E2607/E2608 | \$460 - \$550 |

Disclaimer: HCPCS codes provided should not be considered as legal advice and do not guarantee reimbursement. Payer coding, coverage, and bundling guidelines may apply. Stealth Products, LLC's review of Medicare guidance suggests that accessories acquired at zero-dollar net cost may not be eligible for separate Medicare reimbursement despite being separately coded and eligible to be unbundled at the time of initial purchase. DME providers are responsible for determining the appropriate billing codes when submitting for insurance reimbursement. Stealth Products, LLC recommends that providers seek competent legal advice to assure a compliant Medicare billing protocol.

HCPCS codes provided should not be considered as legal advice and do not guarantee reimbursement.

DME providers are responsible for determining appropriate billing codes when submitting for insurance reimbursement.

**SOLUTIONS
FOR LIFE**





CUSHION COLOR GUIDE

To make your cushion selection process easier, Stealth Products Cushions are marked with a color coded patch. The color of the patch identifies the function and HCPC code of the cushion.

HCPCS CODE ALLOWABLE:

E2601/E2602 – \$60.69/\$118.48

E2603/E2604 - \$150.42/\$186.98

E2605/E2606 - \$267.13/\$416.73

E2607/E2608 - \$287.64/\$345.43

E2622/E2623 - \$328.94/\$418.56

E2624/E2625 - \$331.65/\$419.84

* HCPCS Allowables are estimations and will vary by state.



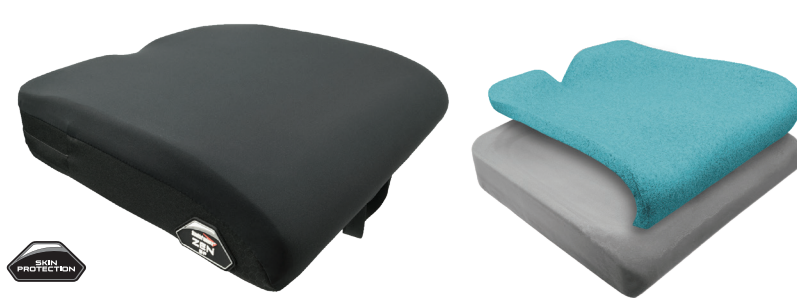
stealthproducts.com



SIMPLICITY G E2601/E2602

Features:

- Contoured, high-density molded foam base
- Coccyx and sacral relief
- Moisture resistant and easy to clean Stealth-Tek incontinence cover.
- Sizes available - 10" - 24"W x 10" - 24"D



ZEN SP E2603/E2604

Features:

- Slightly Contoured, high-density molded foam base
- FRG Comfort foam topper for skin protection
- Standard Visco topper (exclusive FRG SunMate) for added comfort
- FRG SunMate is an all natural flame retardant material.
- Coccyx and sacral relief
- CoolCore® technology cover standard.
- Optional Urethane liner
- 4-Way Stretch Poly Liner optional
- Sizes available - 10"-24"W x 10"-24"D
- Optional Mesh and Stealth Tek cover
- Optional ABS or ACM solid seat insert
- Special Order configurations available



GLACIAL SP E2603/E2604

Features:

- Contoured, high-density molded foam base
- Soft gel top layer for skin protection
- Coccyx and sacral relief
- CoolCore® technology cover standard.
- 4-Way Stretch Poly or Urethane liner optional
- Sizes available - 10"-24" W x 10"-24"D
- Optional Mesh and Stealth Tek cover
- Optional ABS or ACM solid seat insert



PREMIERE P E2605/E2606

Features:

- Lateral and pre-ischial shelf contoured, high-density specially formulated molded foam base
- Built-in positioning platform for off loading
- Standard Visco topper (exclusive FRG SunMate) for added comfort
- FRG SunMate is an all natural flame retardant material.
- Coccyx and sacral relief
- Sizes available - 16"-20"W x 16"-20"D 18" x 22", 20" x 22" 22" x 22" Coming Soon
- CoolCore® technology cover standard.
- Optional Urethane liner
- Optional 4-Way Stretch Poly liner
- Optional Mesh outer cover
- Optional ABS or ACM Solid Seat Insert



SPECTRUM FOAM SPP E2607/E2608

Features:

- Lateral and pre-ischial shelf contoured, high-density molded foam base
- Multi-layer, viscoelastic foam insert under at risk bony areas
- CoolCore® technology cover standard.
- Urethane liner for incontinence
- 4-Way Stretch Poly liner optional
- Sizes available - 16" - 32"W x 16" - 28"D
- Custom sizes available
- Optional Stealth-Tek, Mesh cover



SPECTRUM GEL SPP E2607/E2608

Features:

- Lateral and pre-ischial shelf contoured, high-density molded foam base
- Twin-cell, lightweight fluid insert under at risk bony areas
- CoolCore® technology cover standard.
- Urethane liner for incontinence
- 4-Way Stretch Poly liner optional
- Sizes available - 14" - 24"W x 16" - 24"D
- Custom sizes available
- Optional Stealth-Tek, Mesh cover



SOLUTION SPP E2607/E2608

Features:

- Lateral and pre-ischial shelf contoured, high-density molded foam base
- Twin-cell, aqueous gel insert under at risk bony areas
- CoolCore® technology cover standard.
- Urethane liner for incontinence
- Sizes available - 10" - 24"W x 10" - 22"D
- Custom sizes available
- Optional Stealth-Tek or Mesh cover.
- 4-Way Stretch Poly liner optional



TRU-COMFORT 2 SPP E2607/E2608

Features:

- Deep contoured, high-density molded foam base
- CoolCore Technology cover standard.
- Easy pull rubber loop zipper handles
- Convenient side pouches on both sides of the cushion
- Sizes available - 16"- 22"W x 16" - 24"D
- Custom sizes available
- 4-Way Stretch Poly liner optional



ESSENCE SPP E2607/E2608

Features:

- Lateral and pre-ischial shelf contoured, high-density specially formulated molded foam base.
- Coccyx and sacral relief.
- CoolCore® technology cover standard.
- 4-Way Stretch Poly liner optional.
- Sizes available - 16"-22"W x 16"-24"D
- Special Order configurations available
- Adjustable contour wedge package provides better positioning customization for the pelvic region. Wedge height from 0.5" - 2" with the wedge kit.
- Optional mesh cover.
- Solid Seat insert included.

Disclaimer:

Sizing represented by cushion part number indicates recommended seat or back pan size for product use. Part number does not provide actual cushion dimensions.