

User Manual



Stealth's Power Tilt

Copyright © 2014 Stealth Products, Inc.

Copyright © 2014 Stealth Products, Inc.

All rights reserved.

Published by Stealth Products, Inc.

November 7, 2014

P45D61R1

Customer Satisfaction

Stealth Products strives for 100% customer satisfaction. Your complete satisfaction is important. Please contact us with feedback or suggested changes that will help improve the quality and usability of our power tilt products. You may reach us at:



104 John Kelly Drive, Burnet Texas 78611

Phone: (512) 715-9995

Toll-Free: 1(800) 965-9229

Fax: (512) 715-9954

Toll-Free: 1(800) 806-1225

info@stealthproducts.com

www.stealthproducts.com

Definitions of Warnings

Definitions of Warnings

Warnings are included for the safety of the user, client, operator and property. Please read and understand what the signal words **SAFETY**, **NOTICE**, **CAUTION**, **WARNING** and **DANGER** mean, how they could affect the user, those around the user, and property.

 **DANGER**

Identifies an **imminent** situation which (if not avoided) will result in **severe injury, death, and property damage**.

 **WARNING**

Identifies a **potential** situation which (if not avoided) will result in **severe injury, death, and property damage**.

 **CAUTION**

Identifies a **potential** situation which (if not avoided) will result in **minor to moderate injury, and property damage**.

NOTICE

Identifies important information not related to injury, but possible **property damage**.

SAFETY

Indicates steps or instructions for safe practices, reminders of safe procedures, or important safety equipment that may be necessary.

IMPORTANT INFORMATION

IMPORTANT INFORMATION!

All persons responsible for fitting, adjustment, and daily use of the devices discussed in these instructions must be familiar with and understand all safety aspects of the devices mentioned. In order for our products to be used successfully you must:

- Read and understand all instructions and warnings
- Maintain our products according to our instructions on care and maintenance
- Devices should be installed and adjusted by a trained technician

Supplier Reference

Supplier: _____

Telephone: _____

Address: _____

Purchase Date: _____

Model: _____

NOTICE

Store these instructions in a safe place so they may be referenced as necessary.

- Read and understand all instructions prior to the use of the product
- If this document contains information you do not understand, or there are concerns about safety or operation, contact Stealth Products, Inc.
- Failure to adhere to instructions and warnings in this document may result in property damage, injury or death. Product misuse due to failure of following instructions will void the warranty

WARNING

ALWAYS have these products fitted, applied, and installed *exclusively* by a trained technician with a full understanding of wheelchair power tilt.

WARNING

Immediately discontinue use if any function is compromised, parts are missing, loose, or shows signs of excessive wear. Consult with your supplier for repair, adjustment or replacement.

Table of Contents

Edition Notice	ii
Definition of Warnings.....	iii
IMPORTANT INFORMATION	iv
Table of Contents	vi
1.0 Safety	1
1.1 Moving Chair.....	2
1.2 Center of Gravity.....	2
1.3 Battery Safety	3
2.0 Components	4
3.0 Power Tilt	5
3.1 Tilting	5
3.2 Limiting Switch Adjustment	7
3.3 Charging Battery	7

Table of Contents

4.0	Troubleshooting.....	8
5.0	Care & Maintenance	9
5.1	Daily Maintenance Check.....	9
5.2	Weekly Maintenance Check.....	10
5.3	Monthly Maintenance Check.....	10
5.4	Direct Water Contact	10
5.5	In Case of Damage or Malfunction.....	11
5.6	Cleaning	11
5.7	Disinfecting	11
6.0	Electromagnetic Interference (EMI).....	12
7.0	Warranty	13
8.0	Notes.....	14

Safety

1.0 Safety

WARNING

Discontinue use if any component stops functioning correctly or as necessary

- **ALWAYS** evaluate how factors such as *tone, fatigue, position, and physical involvement* will impact individual
- **DISCONNECT** the power tilt from charger and/or turn off control box when cleaning, disinfecting, maintaining, repairing, servicing the unit
- **NEVER** over tighten clamps or fasteners. Over tightening will damage components and fasteners

Environment Safety

- Always operate below temperatures of 122°F/50°C.
- **DO NOT** leave the battery charger connected to wall when not charging
- **DO NOT** expose the power tilt to direct contact with water, condensation, icing, or dampness
- **DO NOT** operate in the shower
- **DO NOT** operate or store near open flame, flammable, or combustible products

NOTICE

ALWAYS have assistance when you are being seated in a power tilt equipped mobility base.

Safety

CAUTION

Turn off control box , unplug tilt interface and/or battery charger before being seated in the power tilt equipped mobility base.

1.1 Moving the Chair

CAUTION

Unplug tilt interface from battery when transporting the wheelchair to prevent unintentional movement.

1.2 Center of Gravity

WARNING

The point where this chair will tip forward, back, or to the side depends on its center of gravity and stability. Please refer to your chair manufacturers manual for more information.

SAFETY

ANTI-TIP tubes can help keep your chair from tipping over backward in normal conditions. Please refer to your chair manufacturers manual for more information on Anti-tip tubes.

1.3 Battery Safety

- Use the correct size and type of battery provided by or specified by the manufacturer of your device

WARNING

Risk of fire, explosion or burns.

Do not disassemble, heat above 122°F/50°C or incinerate.

CAUTION

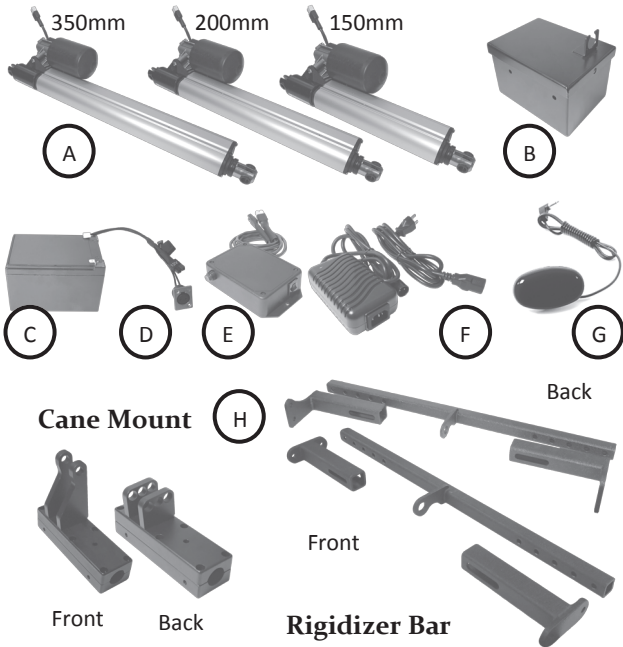
Avoid short circuit.

- **DO NOT** charge in a sealed container
- **KEEP AWAY** from sparks and flames
- **DISCONNECT BATTERY** from device when it is not expected to be in use for several months
- **DO NOT** operate power tilt while the battery is charging

NOTICE

Do not use household waste for battery disposal. Battery should be recycled or disposed of properly. Check with your local solid waste officials for details in your area for recycling options or proper disposal.

Power Tilt Components



2.0 Components

Stealth's Power Tilt Package includes:

- A. Actuator (350/200/150)mm
- B. Battery Box
- C. Battery
- D. Power Interface
- E. Control Box
- F. Battery Charger
- G. Egg Switch
- H. Mounting Hardware
 - a. Cane Mount (Front/Back)
 - b. Rigidizer Bar (Front/Back)
 - c. or combination
- I. User Manual

3.0 Power Tilt

Stealth Products' power tilt system provides an electrically controlled independent tilt function to manual "tilt in space" chairs. It provides the capability for individuals to tilt their own chair without the need of an attendant.

3.1 Tilting

Tilting can be achieved by pressing the red button on the tilt control box (Fig. 3.1.0) or by pressing an attached 1/8" mono mechanical switch (Fig. 3.1.1). The button or switch will provide a simple single button toggle control of the tilt. Press and hold once to tilt one direction then release when in desired position. Then press and hold again to go the opposite direction.

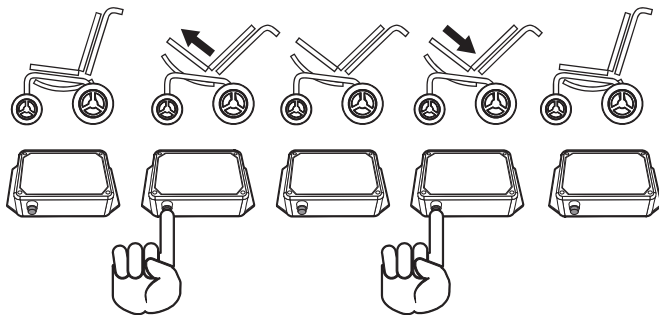
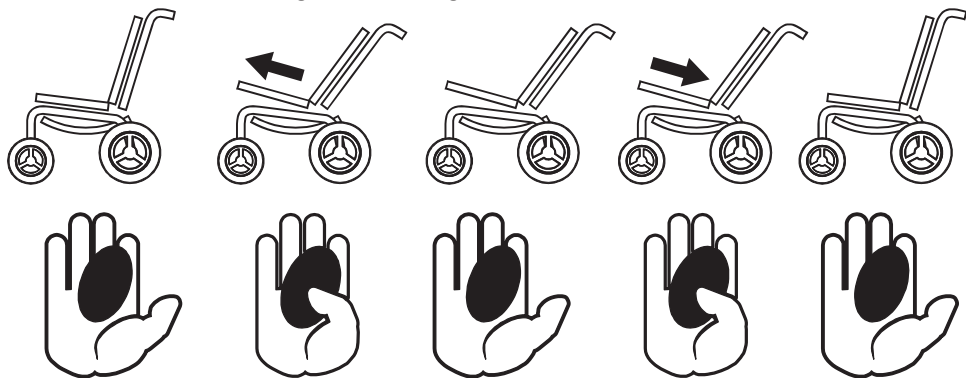


Figure 3.1.0
Tilting with control box

Power Tilt Operation

Figure 3.1.1 Tilting with mechanical switch



3.2 Limiting Switch Adjusting

⚠ CAUTION

IN THE CASE THAT THE ACTUATOR TOUCHES THE FRAME, **DO NOT USE** to avoid damage. Limit switch adjustment should be done by a trained technician. Contact supplier for assistance if limit switch adjustment is needed.

3.3 Charging Battery

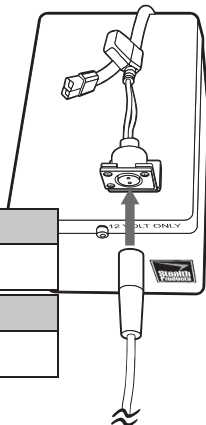
- Connect battery charger to the power interface (see image on the right)
- Plug battery charger to wall and wait until charging process is complete
- When battery is completely charged, disconnect battery charger from power interface and unplug from wall. Never leave charger plugged to wall if not charging

⚠ CAUTION

DO NOT leave the battery charger connected to wall when not charging.

NOTICE

DO NOT operate power tilt while the battery is charging.



4.0 Troubleshooting

NOTICE

In the case that the power tilt or motor is not responding:

- Make sure all plugs and cords are in good condition and properly connected
- Operate from control box. If power tilt responds, then the mechanical switch will need to be replaced
- Check fuse in power interface. Replace with 15 Amp fuse if necessary
- Open battery box and ensure there is no corrosion accumulation in battery poles. Disconnect battery and clean poles if necessary
- Use a voltmeter or battery tester to check the 12V battery. If the battery has insufficient charge, charge the battery. If battery does not recharge, contact your supplier
- Ensure charger is in good condition and working properly, if not, call supplier for replacement or repairs

WARNING

Contact supplier with any safety or operation concerns.

Discontinue use if any component stops functioning.

Repairs or replacements should be performed by a trained technician.

5.0 Care & Maintenance

WARNING

Contact supplier with any safety or function concerns.
Discontinue use if any component stops functioning.
Repairs or replacements should be performed by a trained technician.

5.1 Daily Maintenance Check

- Ensure all cords are properly connected and secured, and show no signs of damage or wear
- Power Interface is clean, properly connected, secure, and show no signs of wear
- Ensure actuator is not making contact with frame
- Ensure the egg switch is functioning as programmed

5.2 Weekly Maintenance Check

- Check all fasteners, and tighten as necessary. Avoid damage caused by over tightening
- Clean all surfaces when needed, and disinfect if required
- Acknowledge that the mechanical condition, as well as, the functions are operating properly
If it is NOT, contact your supplier for immediate repairs

5.3 Monthly Maintenance Check

- Disconnect and thoroughly check your power tilt, and all parts, cords and plugs for any type of wear, tear, or damage
- Check for changes in the power tilt operation or performance

5.4 Direct Water Contact

- Disconnect the charger if plugged in
- Thoroughly dry power interface connections
- Allow to dry for 12 hours in a warm dry place to allow unseen moisture to evaporate
- Check that the power tilt operates to specifications before use
- If there are changes in operation or performance, contact your supplier

5.5 In Case of Damage or Malfunction

If the power tilt does not function as intended, follow troubleshooting. Discontinue use if the problem persists. Contact your supplier for repair and refurbishment of power tilt.

5.6 Cleaning

- Positioning accessories can be wiped clean with a damp cloth and mild nonabrasive cleaner
- Insure all cleaners are approved for finished steel, aluminum, plastic and upholstered surfaces
- Do not immerse in water or rinse with a water hose

5.7 Disinfecting

- When needed, surfaces can be wiped with an approved disinfecting product
- Ensure the disinfectant is approved for finished steel, aluminum, plastic and upholstered surfaces

6.0 Electromagnetic Interference (EMI)

Electronics may be susceptible to EMI. EMI is the interfering energy emitted from sources such as radio stations, TV stations, radio transmitters, and cellular phones. The interference from radio waves may cause malfunctions and equipment damage.

Warranty

7.0 Warranty

Stealth Products warrants against failure due to defective materials or workmanship:

Covers: 180 days	Hardware: 5 years	Electronics: 5 years
------------------	-------------------	----------------------

Limitations

Stealth Products, Inc. does not warrant damage due to, but not limited to:

- Misuse, abuse or misapplication of products
- Modification of product without written approval from Stealth Products, Inc.
- Any alteration, or lack of serial number, where applicable will automatically void this warranty
- Stealth Products, Inc. is liable for replacement parts only
- Stealth Products, Inc. is not liable for any incurred labor costs

CAUTION

These products are designed to be fitted, applied and installed exclusively by a trained technician. The fitting, application and installation by a non-qualified individual could result in serious injury.

8.0 Notes

Notes



Stealth Products, Inc.

104 John Kelly Drive
Burnet, Texas 78611

www.stealthproducts.com
info@stealthproducts.com
www.facebook.com/StealthProducts

Tel: (512) 715-9995
Toll-Free: 1(800) 965-9229

Fax: (512) 715-9954
Toll-Free: 1(800) 806-1225

Department	Initial	Date
Tested		
QC		